



TARGA 45 OPEN
OPEN THE POSSIBILITIES





WHERE POWER, LUXURY & VERSATILITY MEET, YOU'LL DISCOVER THE TARGA 45 OPEN

Alberto Mancini's design masterpiece brought to life in the perfect motor yacht.

The Targa 45 OPEN is the epitome of style and versatility, with a host of features designed to make your perfect day that little bit better. The exhilaration from the powerful engines getting you to your destination, lazing in the sun at anchor or taking the discretely garaged tender to the beach for lunch and exploring hidden coves. Then back to relaxing together beneath a billion stars with the roof fully retracted.

WHERE JAW DROPPING LINES MEET INNOVATIVE DESIGNS

From the outside the Targa 45 OPEN will turn heads with its sleek, low profile lines, but its true design genius lies in the innovative use of space inside to create a sense of openness and luxuriousness for you and your guests.

SPECIFICATION HIGHLIGHTS

- Volvo IPS engines for power and ease of handling
- Two Cabins / Two Heads
- Your choice of mid or forward master cabin
- Comfortable, full standing headroom throughout all cabins
- One single piece windscreen for uninterrupted views
- Effortless electric sliding canvas roof
- Luxurious, large forward and aft sunbeds
- Fully integrated garage for Williams 280 MiniJet

OPTIONAL EQUIPMENT HIGHLIGHTS

- Bow thruster
- Seakeeper® 3 gyroscopic stabiliser
- Additional drawer storage to mid cabin
- Elegant blue or white exterior mood lighting
- Volvo Dynamic Positioning System
- Stay cool with high-capacity air conditioning
- Integrated Sonos audio system





RELAX AS FAST AS YOU LIKE













THE FINAL WORD ON LUXURY, IS YOURS

Our passionate team of interior designers have spent years refining and perfecting a set of themes and colour schemes to subtly compliment both your life on land, and on sea.

Perhaps you will fall for the warm, rich yellows that nod gracefully to the sun drenched lemon orchards of Sicily, or the deep oceanic blues with gentle swirls of muted greys that sing in perfect harmony with the very sea itself?

Whatever your preference, you'll know our themes and palettes have been created to stand the test of time.

**For any help and guidance on finding the perfect theme for you,
simply contact your local dealership.**

MAKING EVERY MILLIMETRE MATTER

TARGA 45 OPEN

PRINCIPAL DIMENSIONS

Length overall	47'7" (14.53m)
Beam (inc. gunwale)	14'2" (4.32m)
Draft	3'8" (1.15m) loaded
Airdraft	15'5" (4.74m)
Transport height	15'6" (4.76m)
Dry weight (approx.)	12.30 imp. tons / 13.77 US tons (12,500kg)
Fuel capacity	286 gallons / 343 US gallons (1300 litres)
Water capacity (inc. calorifier)	96 gallons / 115 US gallons (438 litres)
Sleeps	4
Classification	CE Category B
Capacity	12 persons

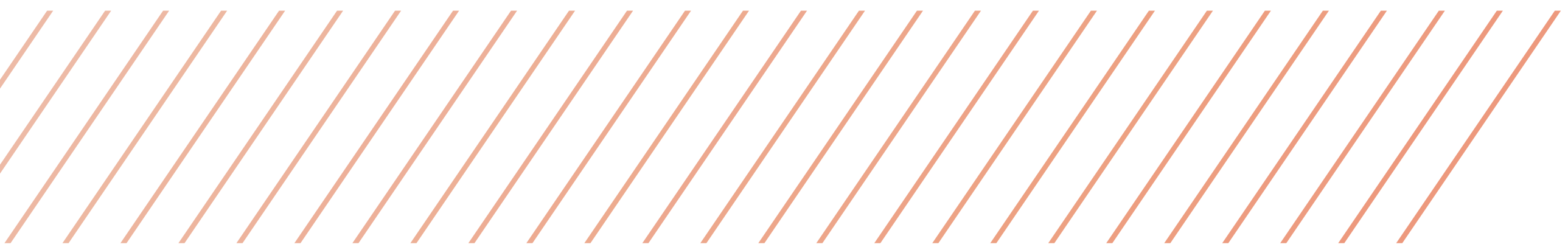
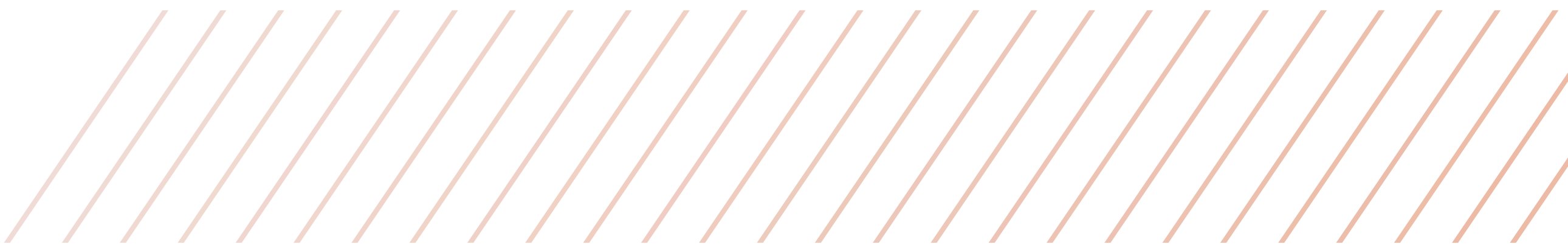
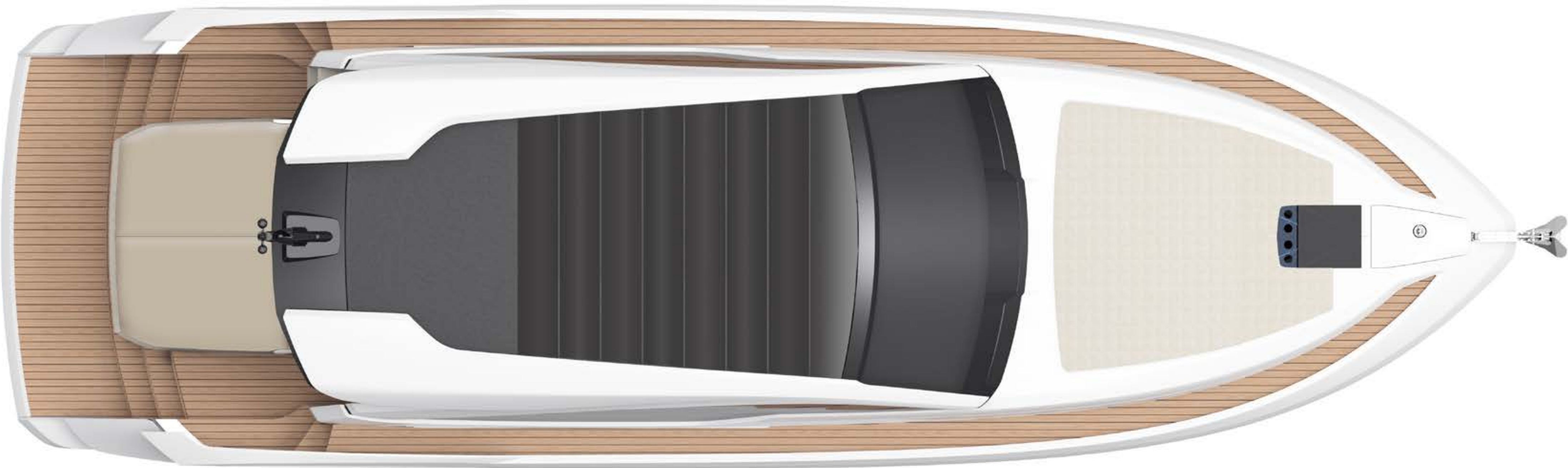
ENGINES AND PERFORMANCE

Twin Volvo Penta IPS650 D6-480
Max. speed: 32 knots
Max. Power: 960 hp
Drive: IPS
Fuel: Diesel



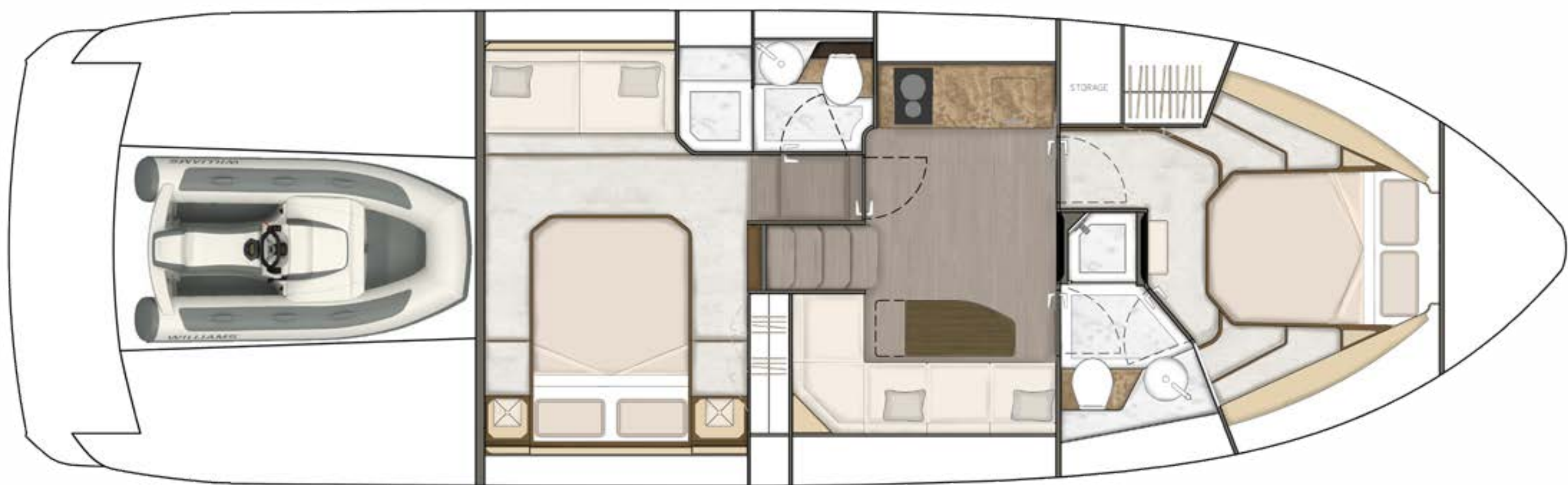
MAIN DECK

TARGA 45 OPEN

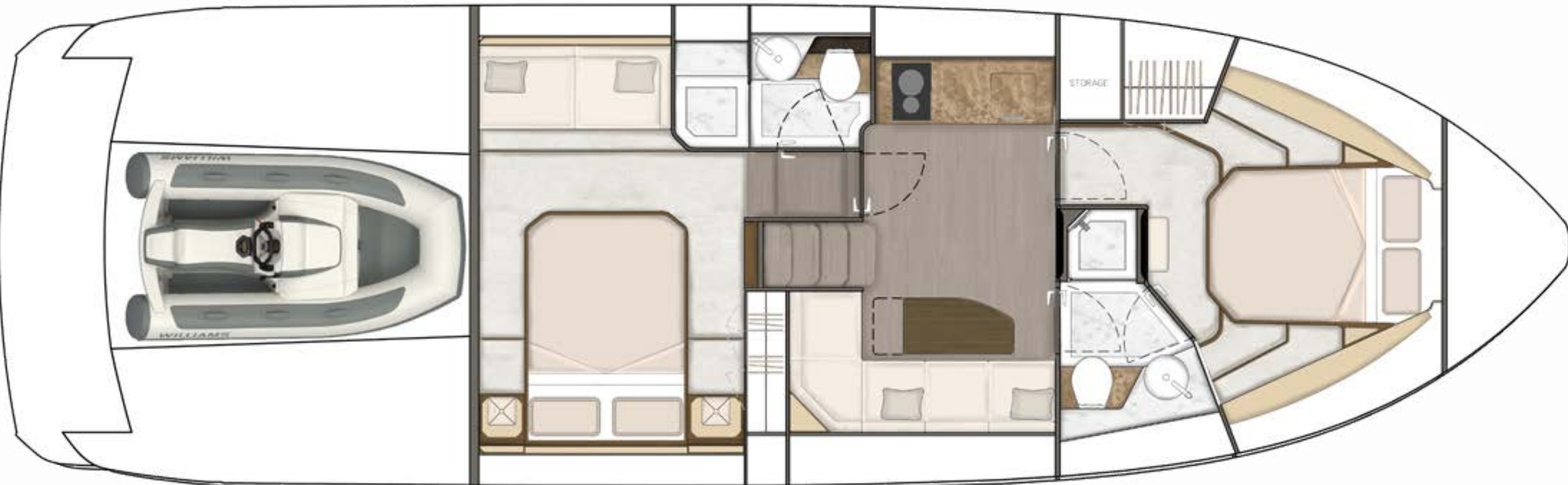


LOWER DECK

TARGA 45 OPEN



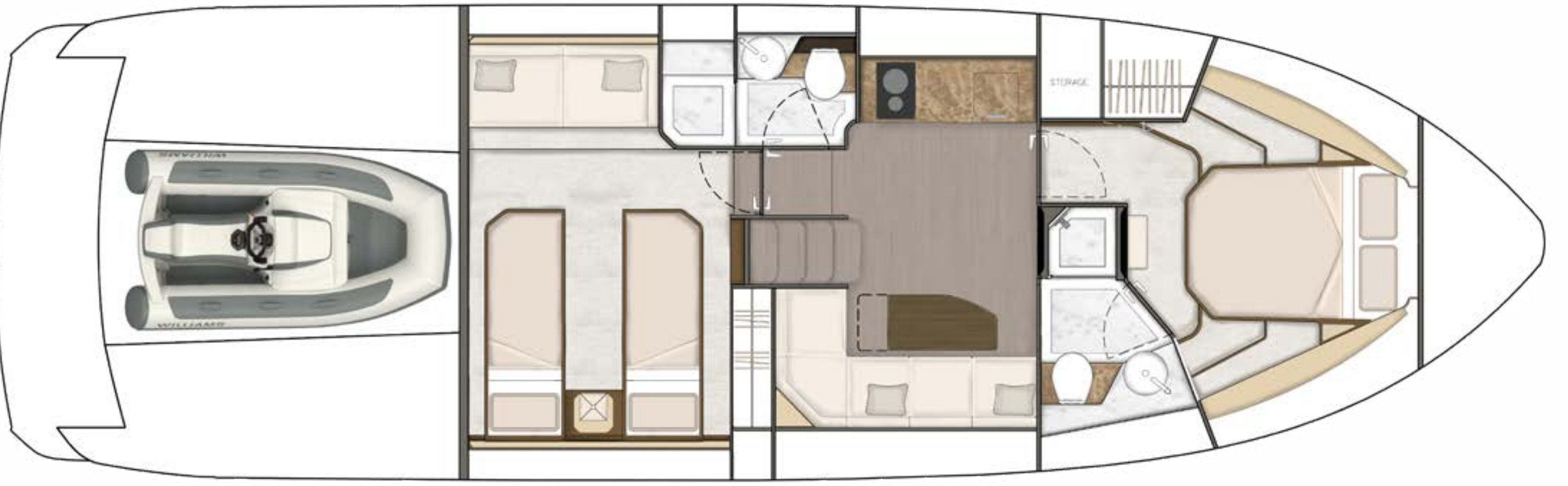
MID MASTER CABIN



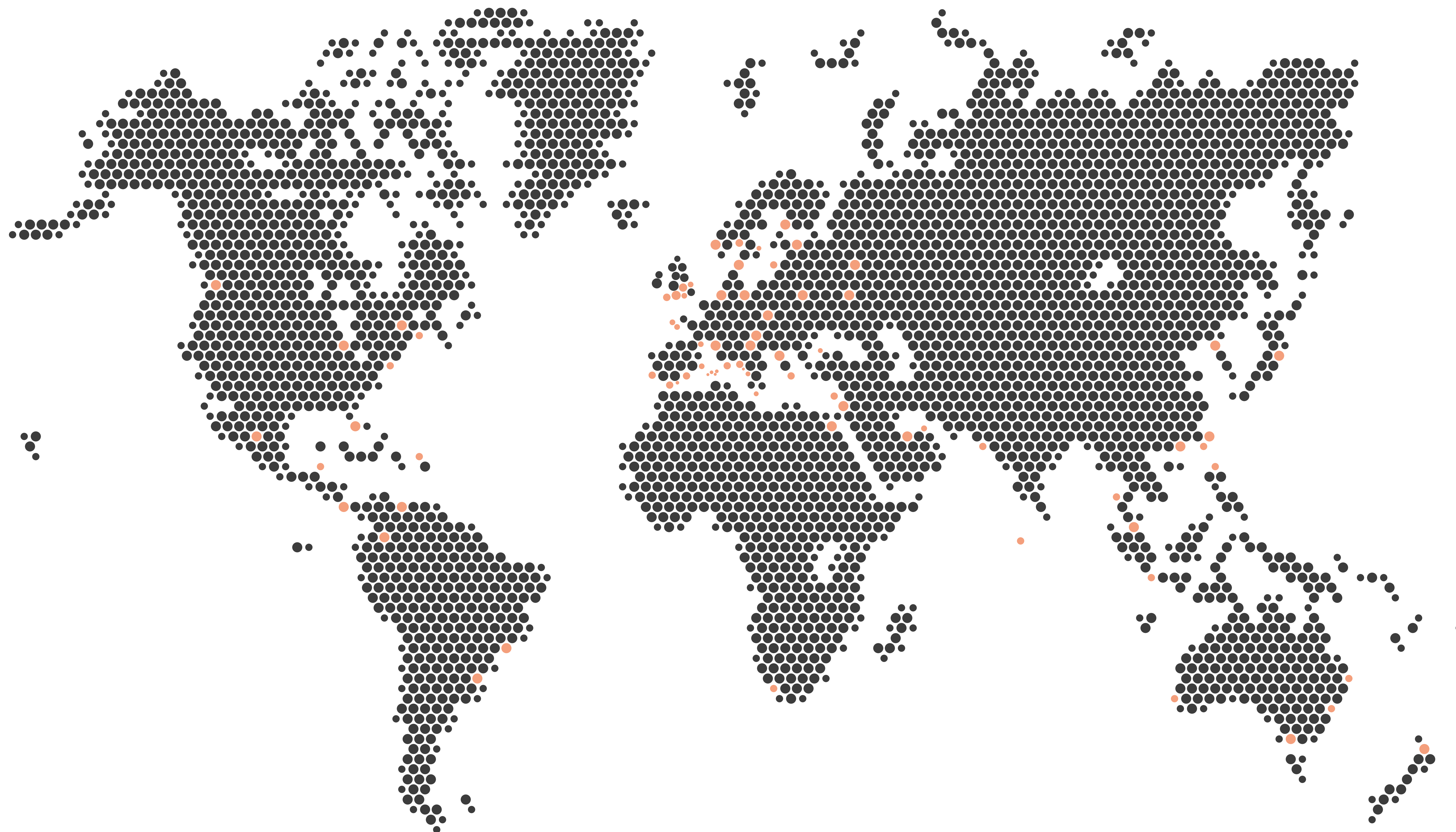
FORWARD MASTER CABIN



FORWARD SCISSOR BERTH



MID CABIN TWIN



FROM DEALERSHIP, TO FRIENDSHIP

As you'd expect, each and every one of our appointed Fairline dealers around the world is a faultless professional who'll work tirelessly to provide you with a yacht that's perfect in every way imaginable.

However, what really sets them apart is their dedication to looking after you like a trusted friend and member of the Fairline family, right from the very first moment you speak.

To speak to your nearest Fairline dealer, visit: [fairline.com](https://www.fairline.com)



DON'T JUST READ ABOUT IT, EXPERIENCE IT

At Fairline we know nothing compares to actually stepping on board. So, once you've had a chance to peruse the deck plans and fall in love with its stunning lines, why not contact your local dealer to arrange a personal tour?





[fairline.com](https://www.fairline.com)

© FAIRLINE YACHTS LTD. ALL RIGHTS RESERVED. FAIRLINE AND TARGA ARE REGISTERED TRADEMARKS OF FAIRLINE YACHTS LTD. TOGETHER WITH ALL TEXT AND IMAGES CONTAINED IN THIS PUBLISHED MATERIAL, THEY ARE PROTECTED BY COPYRIGHT AND MAY NOT BE PRODUCED IN ANY FORM WITHOUT THE EXPRESS WRITTEN PERMISSION OF THE COPYRIGHT OWNERS. Published by Fairline Yachts Ltd, Oundle, PE8 4HN, England. Fairline Yachts constantly seek ways of improving specifications, design and production. Therefore, alterations take place on a continuous basis. Whilst every effort is made to produce up-to-date literature, the descriptions, specifications, illustrations and photographs in this brochure should not be regarded as a definitive guide to current specifications, nor does it constitute an offer for the sale of any particular boat. Appointed dealers are not agents of Fairline Yachts Ltd & are not authorised to commit Fairline Yachts Ltd by any express or implied undertaking or representation. Performance estimates are given in good faith, but are in no way guaranteed for any particular boat. Dirt on the bottom of the boat, damage to propellers, engine tuning, external water and air temperatures and the weight of crew, fuel and water carried can all adversely affect performance. For these and other reasons we can give no performance guarantees.