

 **FAIRLINE**

SQUADRON 68
PREPARE TO BE MOVED, IN EVERY WAY.





DESIGNED FOR LIVING, BUILT FOR ADVENTURE

The Squadron 68 captures the true essence of Fairline, a motor yacht of unparalleled luxury and style, designed with the spirit of adventure to take you further and explore wider. Fairline's stunning vision of strong, bold lines creates a sense of perpetual motion that even when moored, seems restless to throw off its lines and head out on its next adventure.

Power, Comfort & Elegance

The Squadron 68 was created for those with a love of adventure, but also a desire for the journey to be effortlessly smooth and the stay uncompromisingly luxurious. Twin Caterpillar C18-1150 or C32-1622 engines and Fairline's legendary build and seakeeping provide the power and comfort. Luxury comes from an extended flybridge with three individually-styled areas for relaxing at anchor while below deck, hand-crafted lacquered wood cabinetry guide you seamlessly through the sumptuous and spacious saloon, brilliantly designed to flow in a single continuous plane without a single step in sight to create the perfect hosting space.

TECHNOLOGY AND LUXURY IN PERFECT HARMONY

With Fairline's contemporary styling the Squadron 68 feels effortlessly modern. But its beauty is more than skin deep. Inside you'll find the latest technology integrated with beautiful, hand-crafted interiors. Art and science in perfect balance.

STANDARD SPECIFICATION HIGHLIGHTS

- Single piece windscreen
- Foredeck seating and sunbathing
- Integrated transom shower & aft facing seating
- High/low bathing platform
- Maple feature inlays to doors and tables

OPTIONAL SPECIFICATION HIGHLIGHTS

- Hardtop with opening canvas sunroof & electric aft sun canopy
- 2 berth crew cabin with wet head
- Electric or hydraulic bow & stern thrusters
- Seakeeper gyroscopic stabiliser
- Glass bridge
- Premium Sonos integrated audio
- Side access door to lower helm





GRACE IN EVERY LINE. BEAUTY IN EVERY DETAIL









STYLE THAT REFLECTS YOU

Our fresh modern interior has been designed to give you a true sense of calm from the moment you step aboard. With earth tones, deep blue hues, natural weaves and linen textures, our interior collection feels as calm as the waves that gently lap against the shore.

As one luxurious space flows effortlessly into the next, thanks to dynamic diagonal lines and an array of beautifully handcrafted materials, you can relax knowing wherever you are onboard, you'll feel perfectly at peace.

For help finding the perfect theme for you, simply contact your local dealership.

MAKING EVERY MILLIMETRE MATTER

SQUADRON 68

PRINCIPAL DIMENSIONS

Length overall (incl. pulpit):	69’3” (21.12m)
Beam (incl. gunwale):	17’2” (5.23m)
Draft	5’1” (1.57m) unloaded
Airdraft	20’1” (6.13m)
Berths	6 - 10
Dry weight (approx.)	43 tonnes / 47.4 US tons (43,000kg)
Fuel capacity	919 gallons / 1103 gallons (4,117 litres)
Water capacity (incl. calorifier)	237 gallons / 285 gallons (1,080 litres)
Type approval	CE Category B
Capacity	16 people

ENGINES AND PERFORMANCE

Twin Caterpillar C18-1150

Max. speed: 31 knots

Max. power: 2300 hp

Drive: Shaft

Fuel: Diesel

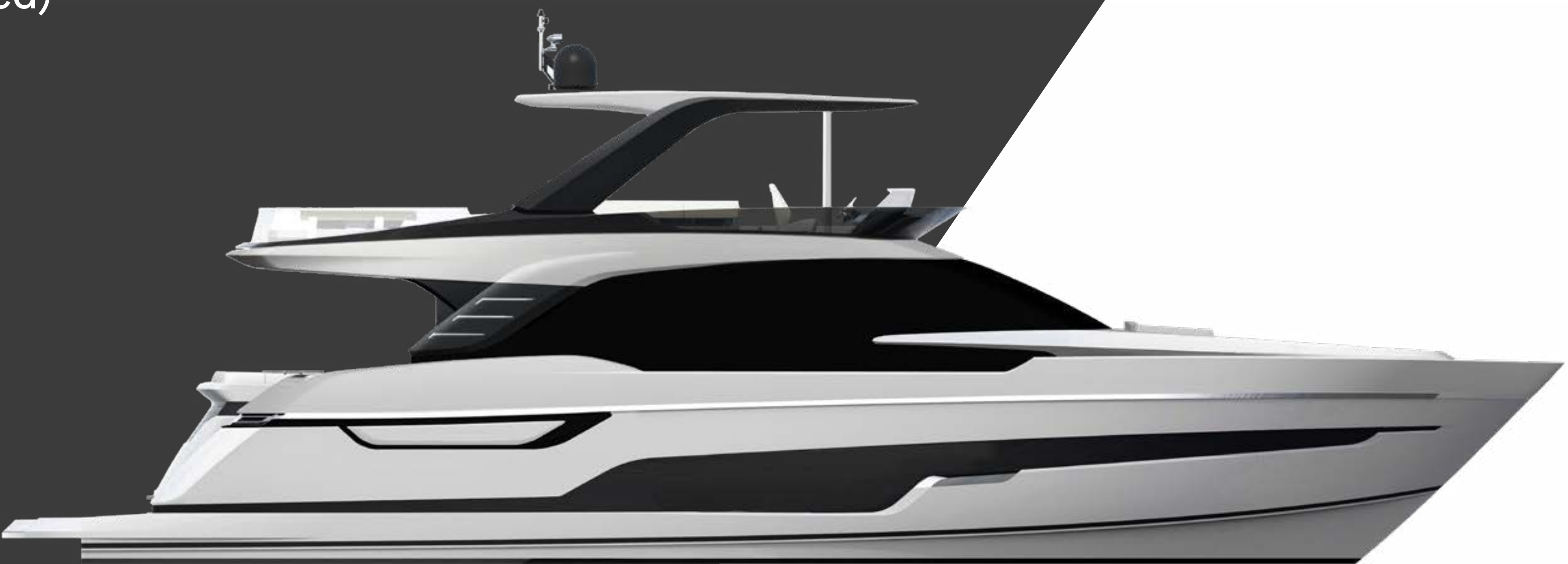
Twin Caterpillar C32-1622

Max. speed: 33 knots (estimated)

Max. Power: 3244 hp

Drive: Shaft

Fuel: Diesel



MAIN DECK

SQUADRON 68



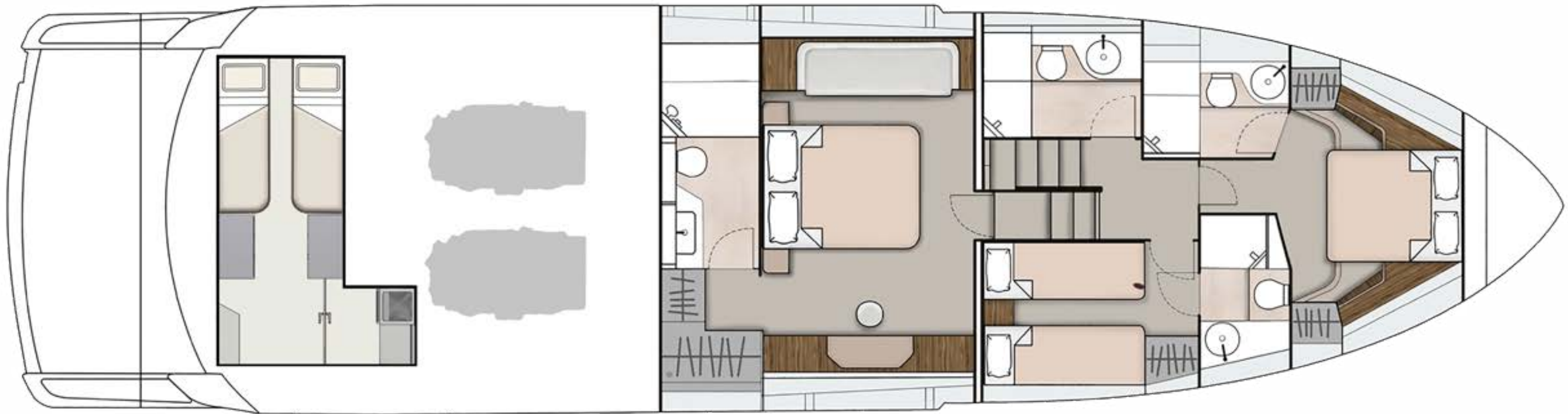
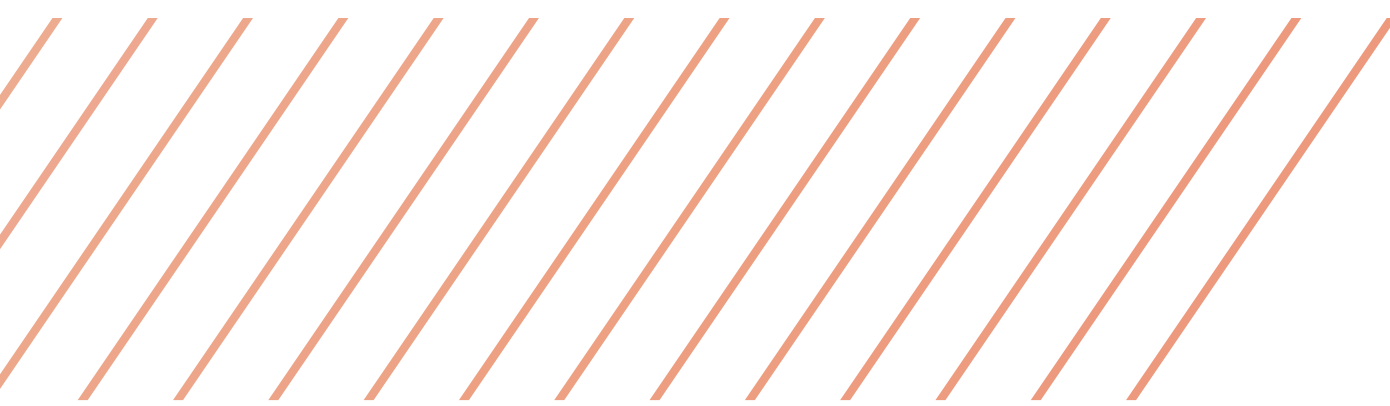
FLYBRIDGE



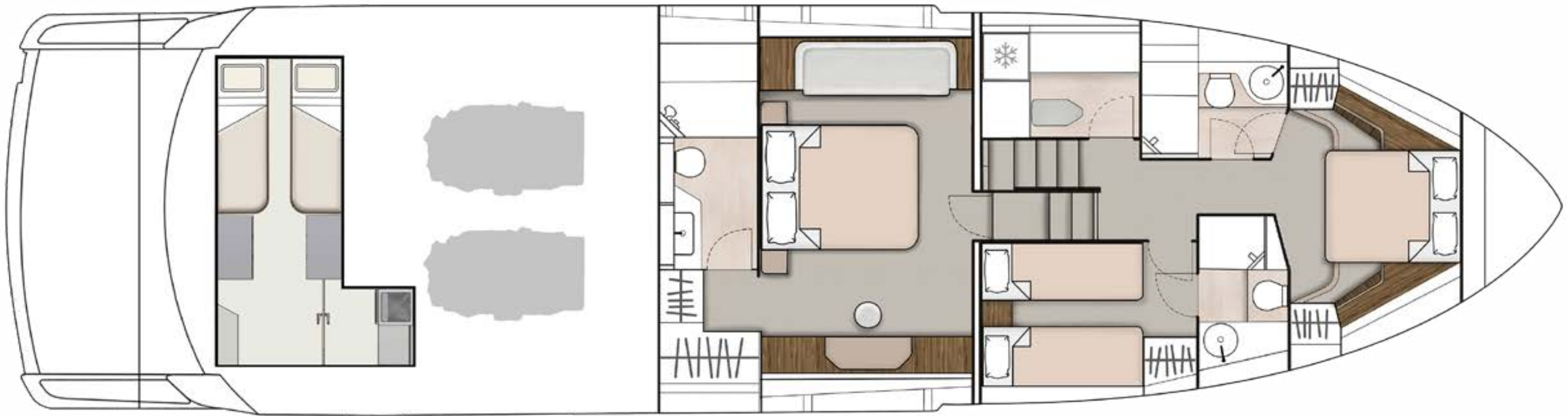
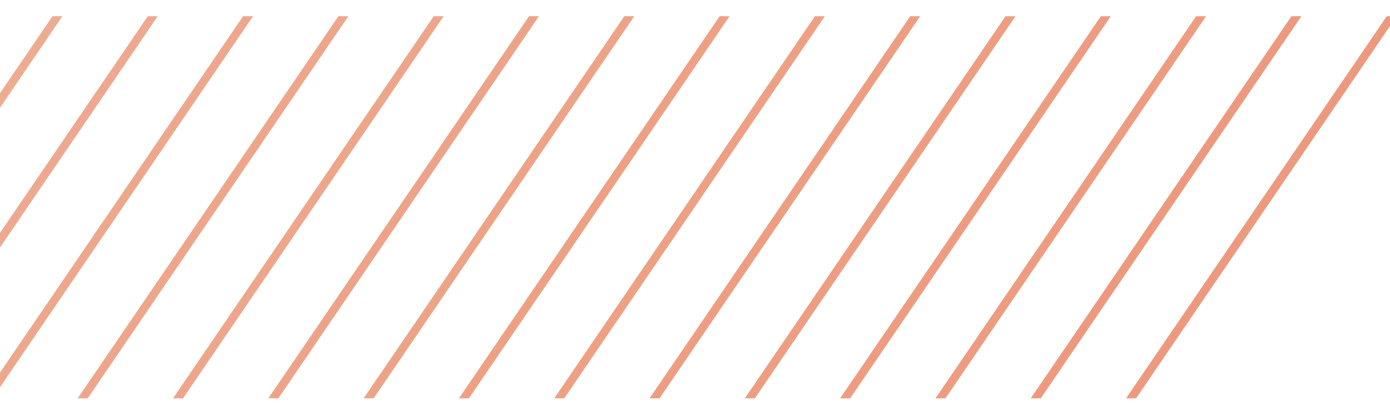
MAIN DECK

LOWER DECK

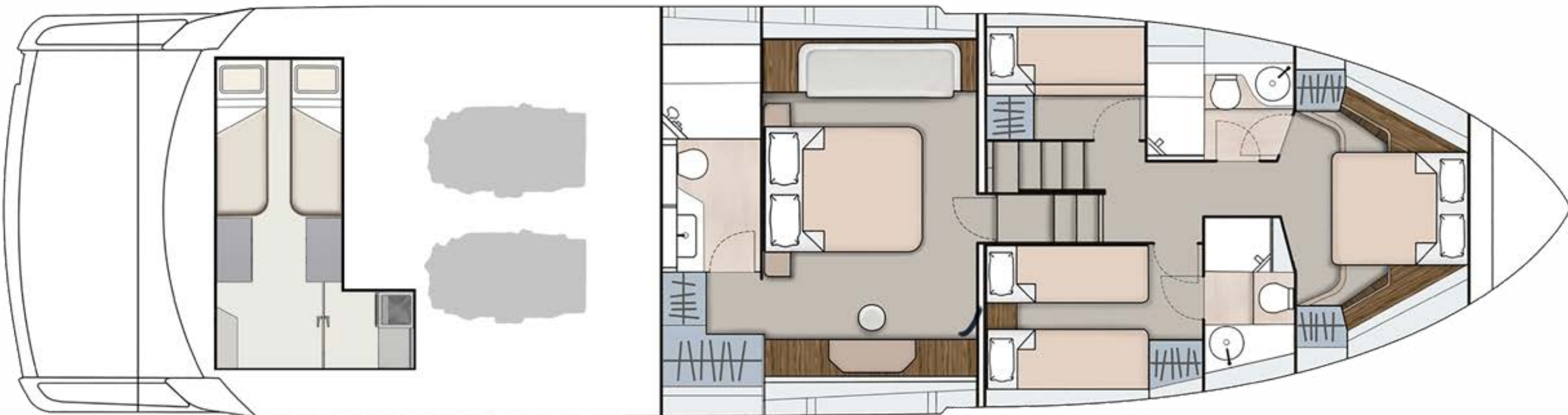
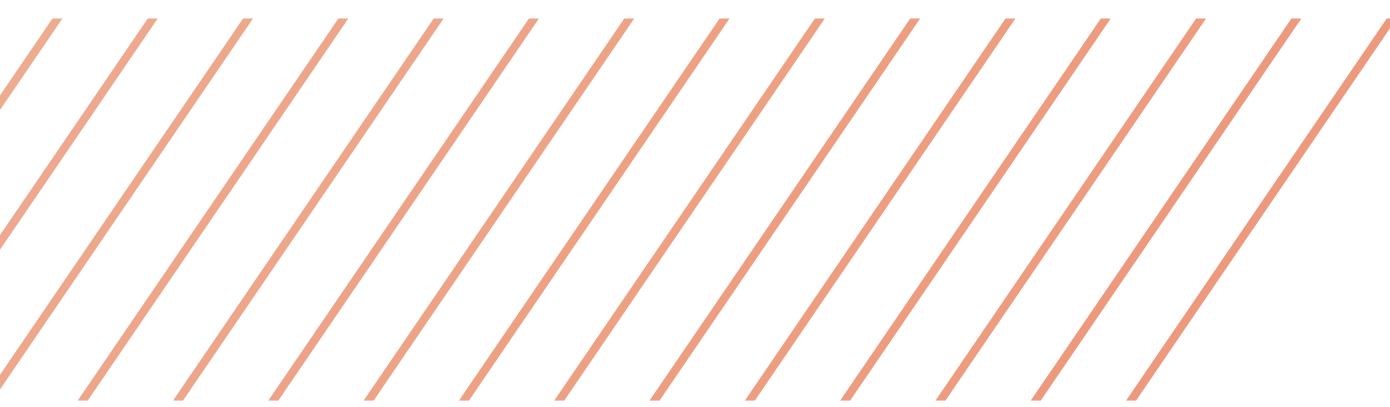
SQUADRON 68



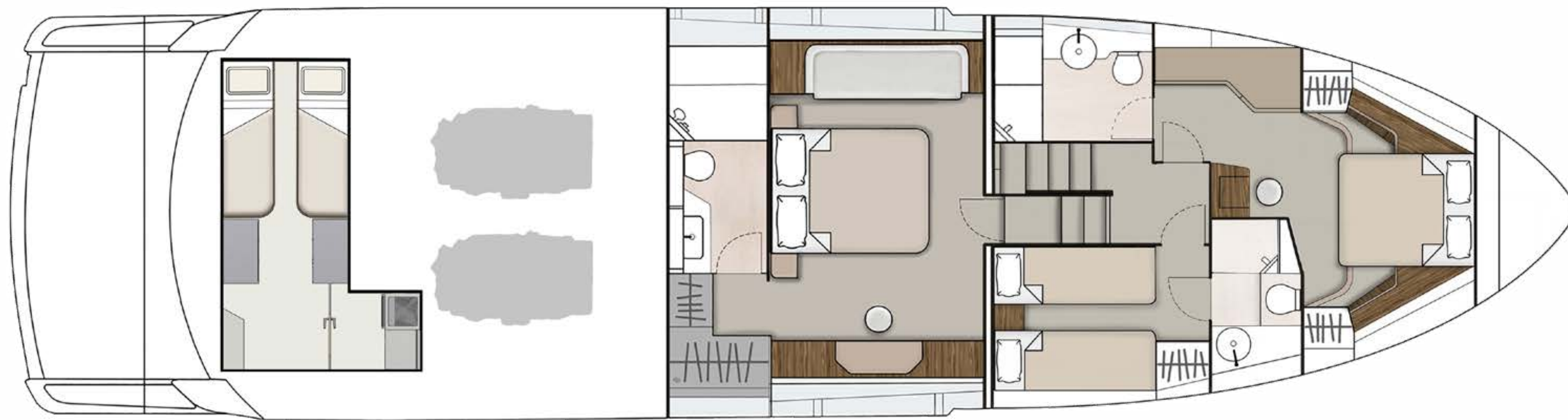
THREE CABIN



THREE CABIN WITH
OPTIONAL UTILITY ROOM



FOUR CABIN

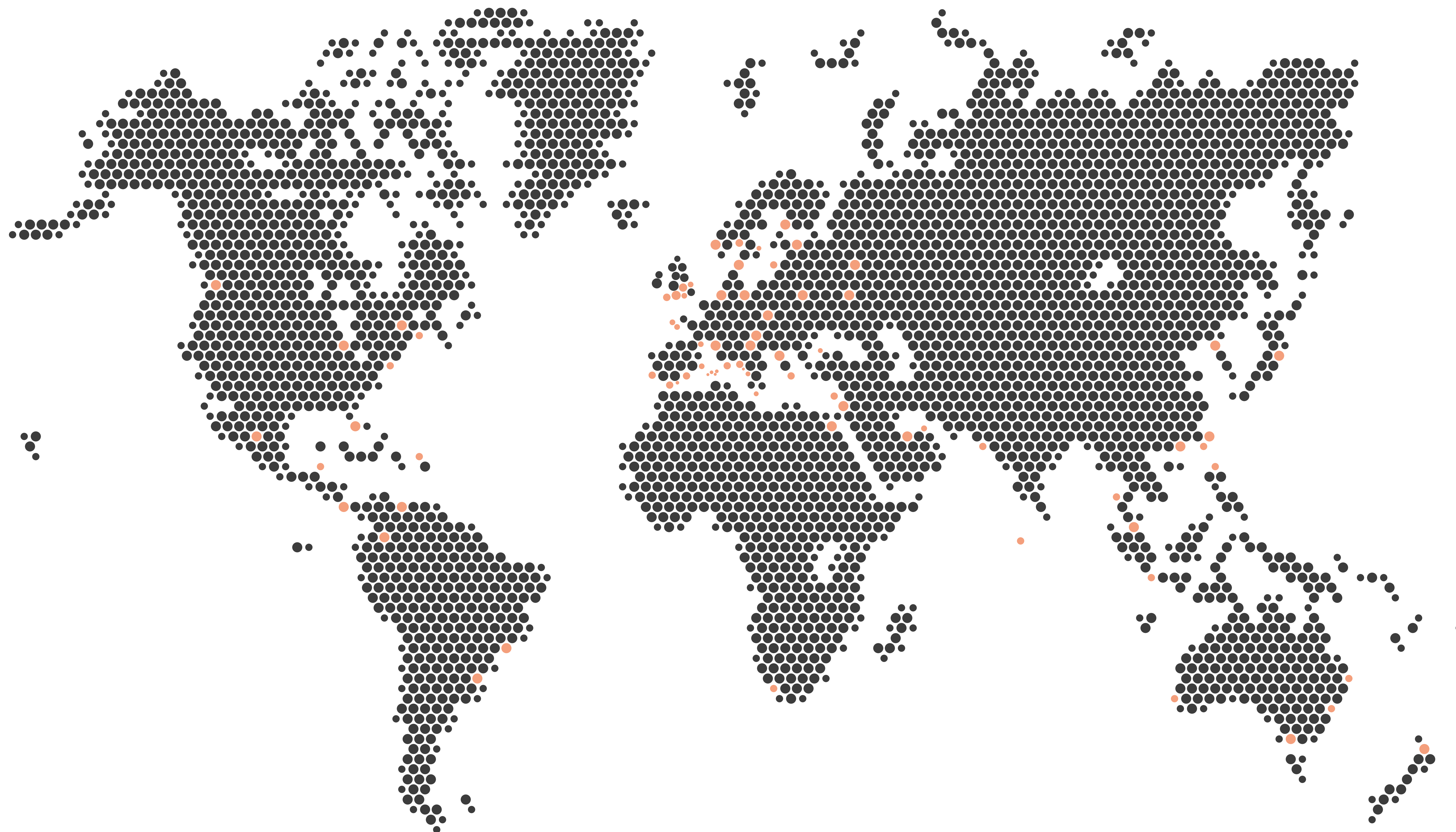


THREE CABIN WITH EXTENDED VIP

LUXURY RECONFIGURED

The Extended Forward Cabin

To ensure our Squadron 68 meets your individual needs perfectly, we have designed an alternative layout for the forward cabin that creates even more room for your guests to relax in after a perfect day's exploring. Featuring a larger ensuite bathroom and much more space, we have made the already magnificent forward VIP cabin, even more impressive and luxurious.

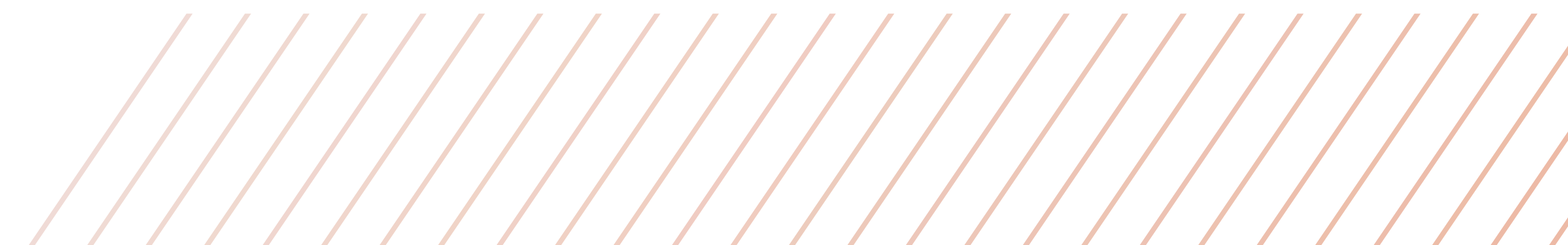


FROM DEALERSHIP, TO FRIENDSHIP

As you'd expect, each and every one of our appointed Fairline dealers around the world is a faultless professional who'll work tirelessly to provide you with a yacht that's perfect in every way imaginable.

However, what really sets them apart is their dedication to looking after you like a trusted friend and member of the Fairline family, right from the very first moment you speak.

To speak to your nearest Fairline dealer, visit: [fairline.com](https://www.fairline.com)



DON'T JUST READ ABOUT IT, EXPERIENCE IT

At Fairline we know nothing compares to actually stepping on board. So, once you've had a chance to peruse the deck plans and fall in love with its stunning lines, why not contact your local dealer to arrange a personal tour?



FAIRLINE



[fairline.com](https://www.fairline.com)

© FAIRLINE YACHTS LTD. ALL RIGHTS RESERVED. FAIRLINE AND SQUADRON ARE REGISTERED TRADEMARKS OF FAIRLINE YACHTS LTD. TOGETHER WITH ALL TEXT AND IMAGES CONTAINED IN THIS PUBLISHED MATERIAL, THEY ARE PROTECTED BY COPYRIGHT AND MAY NOT BE PRODUCED IN ANY FORM WITHOUT THE EXPRESS WRITTEN PERMISSION OF THE COPYRIGHT OWNERS. Published by Fairline Yachts Ltd, Oundle, PE8 4HN, England. Fairline Yachts constantly seek ways of improving specifications, design and production. Therefore, alterations take place on a continuous basis. Whilst every effort is made to produce up-to-date literature, the descriptions, specifications, illustrations and photographs in this brochure should not be regarded as a definitive guide to current specifications, nor does it constitute an offer for the sale of any particular boat. Appointed dealers are not agents of Fairline Yachts Ltd & are not authorised to commit Fairline Yachts Ltd by any express or implied undertaking or representation. Performance estimates are given in good faith, but are in no way guaranteed for any particular boat. Dirt on the bottom of the boat, damage to propellers, engine tuning, external water and air temperatures and the weight of crew, fuel and water carried can all adversely affect performance. For these and other reasons we can give no performance guarantees.