

 **FAIRLINE**

SQUADRON 58
PREPARE TO BE MOVED, IN EVERY WAY.





UNMISTAKABLY SQUADRON. UNQUESTIONABLY ORIGINAL

This isn't simply the next Squadron in our range, it's an entirely new boat. The next chapter in Squadron's illustrious history. With an abundance of new and luxurious details, stunningly fresh lines, and an eye-catching modern interior, the Squadron 58 is destined to capture the hearts and minds of motoryacht enthusiasts the world over. So, if you're ready for a Squadron like no other, it's time to step aboard.

REIMAGINING EVERY ANGLE, TO CREATE NEW WAYS TO EXPERIENCE PERFECTION.

With our innovative new Beach Club design, every inch of the all new Squadron 58 has been optimised to improve every moment you spend on board. Take the fold-down balconies, which at the push of a button lower to increase your deck space on both sides of the yacht. And, with the integrated sliding submersible bathing platform, you can now double the usable deck space in just a few seconds and then use the extended space to create an elegant step down into the water.

SPECIFICATION HIGHLIGHTS

- 3 cabins / 2 heads layouts so you can comfortably host your friends and family, plus an optional crew cabin
- Single piece double curvature windscreen allows more light into the main deck by curving into the roof.
- Cockpit bar that links the galley to both the port side balcony and the cockpit via two power down windows.
- Expansive cockpit features option of powered fold down balconies and slide to hide bathing platform.
- Reversible cockpit seating to look forward or aft.
- Angled patio door to ensure the flybridge staircase encroaches as little as possible on cockpit or interior space.
- Glass transom on flybridge to give unimpeded views over the stern.





A FRESH LOOK. THE SAME BEATING HEART.











THE FINAL WORD ON LUXURY IS YOURS

The neutral interior scheme, first seen on the flagship Squadron 68, offers an elegant, muted palette featuring soothing taupe, white and cream colourways.

Combined with carefully designed mood lighting, inside and out, it continues below deck to accentuate the feeling of space with larger hull windows and generous headroom throughout.

For any help and guidance on finding the perfect theme for you, simply contact your local dealership.

MAKING EVERY MILLIMETRE MATTER

SQUADRON 68

PRINCIPAL DIMENSIONS

Length overall (incl. pulpit):	58'11" (17.98m)
Beam (incl. gunwale):	16'4" (4.99m)
Draft	4'10" (1.52m) unloaded
Airdraft	23'8" (7.26m)
Berths	6 - 7
Type approval	CE Category B
Capacity	16 people

ENGINES AND PERFORMANCE

Twin Volvo Penta D13-900

Power: 1800 hp
Drive: Shaft
Fuel: Diesel

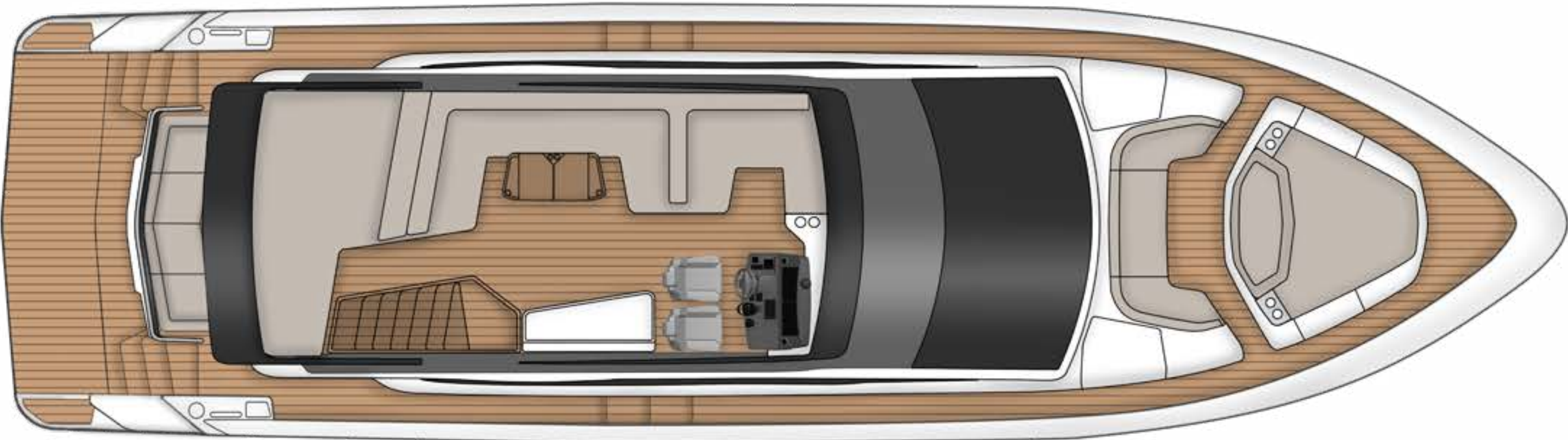
Twin Volvo Penta D13-1000

Power: 2000 hp
Drive: Shaft
Fuel: Diesel



MAIN DECK

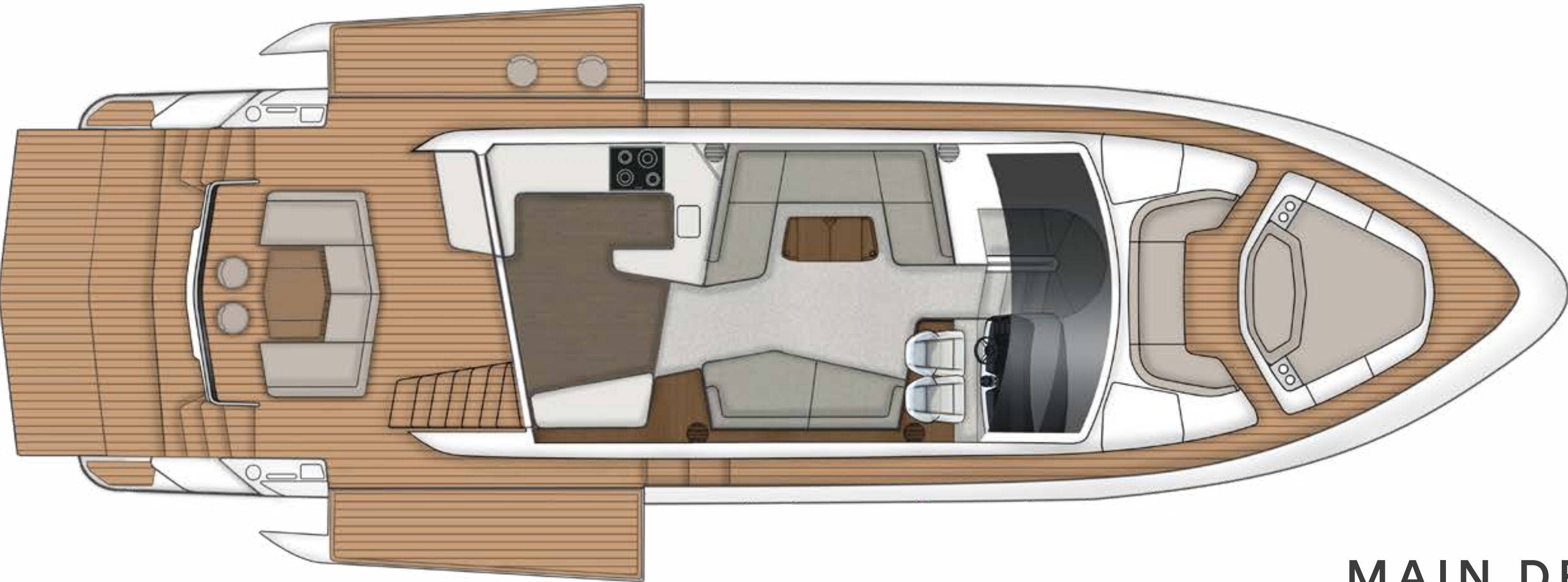
SQUADRON 58



FLYBRIDGE



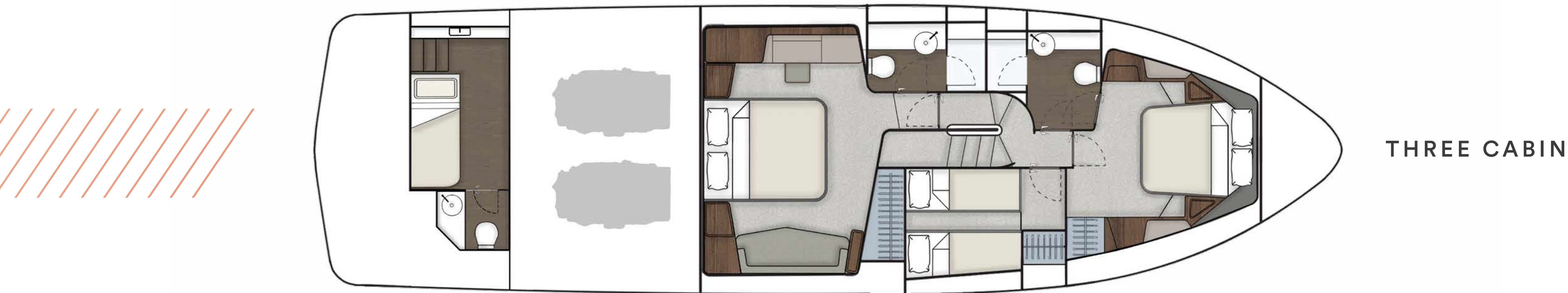
MAIN DECK

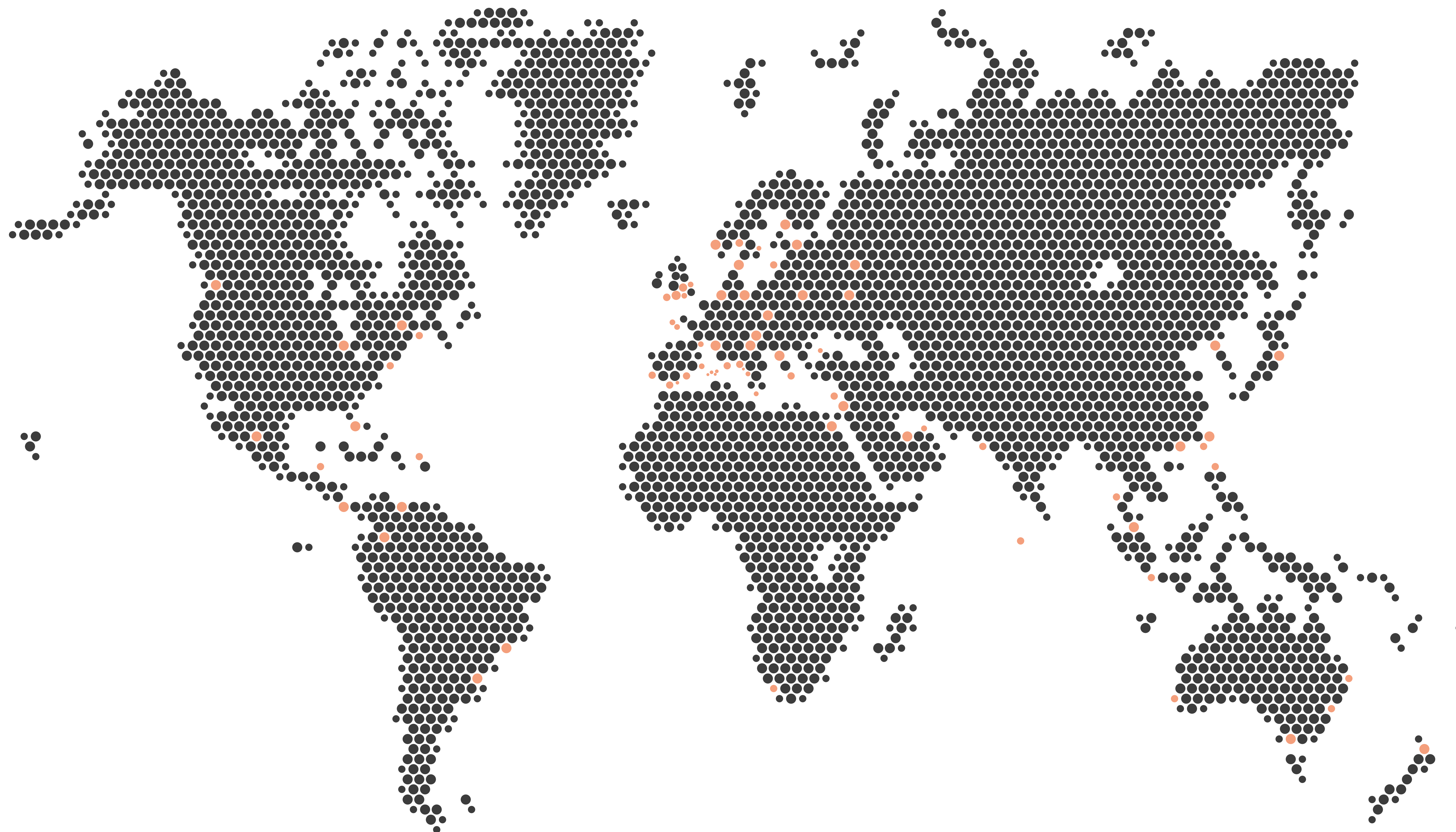


MAIN DECK BEACH CLUB

LOWER DECK

SQUADRON 58





FROM DEALERSHIP, TO FRIENDSHIP

As you'd expect, each and every one of our appointed Fairline dealers around the world is a faultless professional who'll work tirelessly to provide you with a yacht that's perfect in every way imaginable.

However, what really sets them apart is their dedication to looking after you like a trusted friend and member of the Fairline family, right from the very first moment you speak.

To speak to your nearest Fairline dealer, visit: [fairline.com](https://www.fairline.com)



DON'T JUST READ ABOUT IT, EXPERIENCE IT

At Fairline we know nothing compares to actually stepping on board. So, once you've had a chance to peruse the deck plans and fall in love with its stunning lines, why not contact your local dealer to arrange a personal tour?



FAIRLINE



[fairline.com](https://www.fairline.com)

© FAIRLINE YACHTS LTD. ALL RIGHTS RESERVED. FAIRLINE AND SQUADRON ARE REGISTERED TRADEMARKS OF FAIRLINE YACHTS LTD. TOGETHER WITH ALL TEXT AND IMAGES CONTAINED IN THIS PUBLISHED MATERIAL, THEY ARE PROTECTED BY COPYRIGHT AND MAY NOT BE PRODUCED IN ANY FORM WITHOUT THE EXPRESS WRITTEN PERMISSION OF THE COPYRIGHT OWNERS. Published by Fairline Yachts Ltd, Oundle, PE8 4HN, England. Fairline Yachts constantly seek ways of improving specifications, design and production. Therefore, alterations take place on a continuous basis. Whilst every effort is made to produce up-to-date literature, the descriptions, specifications, illustrations and photographs in this brochure should not be regarded as a definitive guide to current specifications, nor does it constitute an offer for the sale of any particular boat. Appointed dealers are not agents of Fairline Yachts Ltd & are not authorised to commit Fairline Yachts Ltd by any express or implied undertaking or representation. Performance estimates are given in good faith, but are in no way guaranteed for any particular boat. Dirt on the bottom of the boat, damage to propellers, engine tuning, external water and air temperatures and the weight of crew, fuel and water carried can all adversely affect performance. For these and other reasons we can give no performance guarantees.