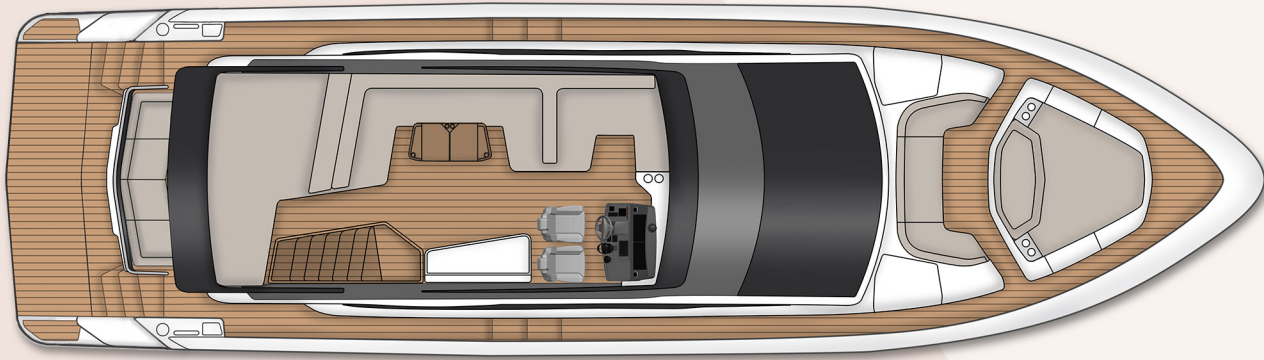


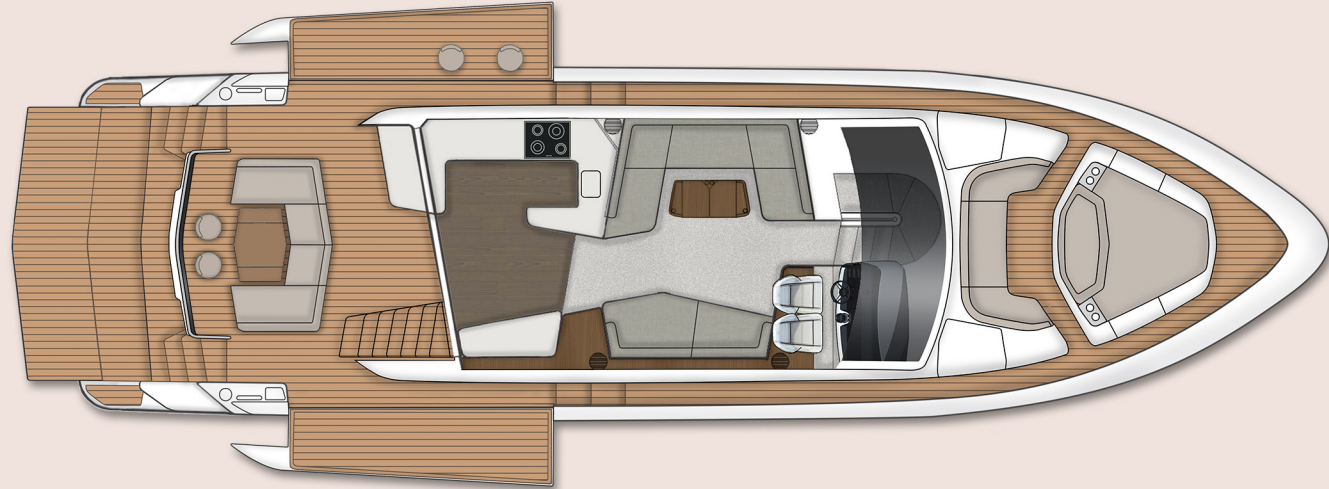
# SQUADRON 58 (PROVISIONAL)



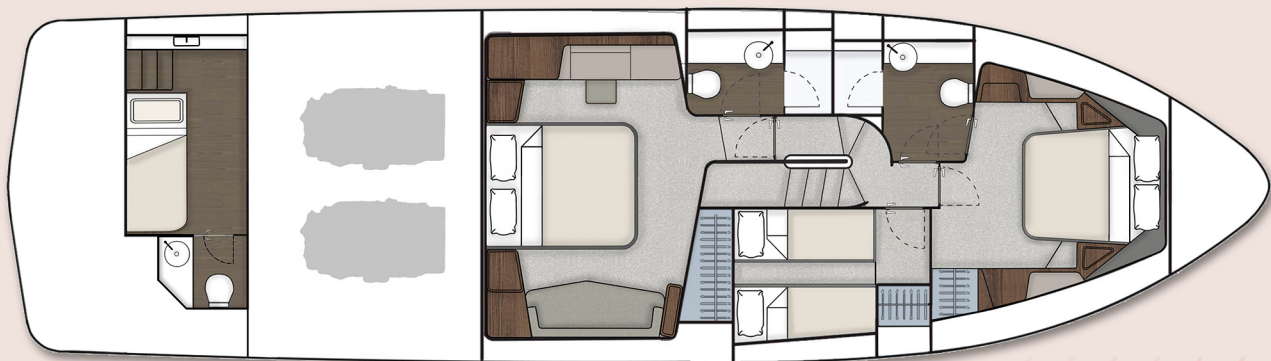
- Flybridge



- Main Deck



- Main Deck with Beach Club (optional)



- Lower Deck

## Principal Dimensions

Length overall (incl. pulpit):	58'11" (17.98m)
Beam (incl. gunwale):	16'4" (4.99m)
Draft:	4'10" (1.52m) unloaded
Airdraft:	23'8" (7.26m)
Transport height:	20'4" (6.24m)
Berths:	6 - 7
Fuel capacity:	610 gallons / 732 US gallons (2774 litres)
Water capacity (incl. calorifier):	154 gallons / 185 US gallons (700 litres)
Type approval:	CE Category B
Capacity:	16 people

## Engines & Performance

Twin Volvo Penta D13-900	Twin Volvo Penta D13-1000
Max. power: 1800 hp	Max. power: 2000 hp
Drive: Shaft	Drive: Shaft
Fuel: Diesel	Fuel: Diesel
Max. speed: 31 knots (estimated)	Max. speed: 34 knots (estimated)



# SQUADRON 58 (PROVISIONAL)

## Deck

- Anchor chain locker
- Anchor winch & controls
- Calibrated galvanised anchor chain (50m)
- Carbon fibre ensign staff
- Fender set
- Fuel fillers
- Full set of IMCO navigation lights
- Hot & cold-water transom shower
- Moulded non-slip deck surface
- Riding light
- Self-stowing Delta® galvanised anchor (32kg)
- Stainless steel bow, cockpit, spring & stern cleats
- Stainless steel aft fairleads
- Stainless steel bow fairleads
- Stainless steel pulpit rail
- Stainless steel transom gates
- Teak laid bathing platform
- Twin horns
- Water filler
- Windscreen washers / wipers

## Foredeck

- Cup holders
- Fusion® speakers
- Recessed seating area with low level lighting
- Seating and storage under
- Tonneau cover
- USB socket

## Cockpit

- 12V heavy duty weatherproof socket
- Access hatch to engine room & side decks
- Boat hook

- Canopy (white vinyl, no windows)
- Courtesy lighting
- Cup holders
- Fixed aft cockpit seating
- Fusion® audio
- Life raft stowage
- Manual bilge pumps
- Mooring lines & stowage
- Teak laid floor
- Teak table with drinks holder
- Transom gates

## Flybridge & Second Helm

- 12V heavy duty weatherproof socket
- Access hatch
- Adjustable/tilt steering wheel
- Aft sunbed
- Bilge pump warning lights and audible alarms
- Bow thruster controls
- Companion seating to helm
- Cup holders
- Electronic single lever throttle & gear controls
- Fusion® audio with 2 x speakers
- GRP table
- High speed magnetic compass
- Moulded non-slip deck surface
- Powered steering
- Radar mast
- Remote anchor winch controls
- Remote control searchlight
- Repeat autopilot controls
- Repeat engine bay fire extinguisher controls
- Repeat engine instrumentation & controls
- Rudder position indicator

- Seating
- Teak laid flybridge steps
- Trim tab controls
- Twin helm seats
- Upholstery & helm covers
- USB socket
- VHF radio incorporating intercom
- Wet bar with refrigerator & sink
- Wind-deflecting screen

## Lower Helm

- Adjustable/tilt steering wheel
- Bilge pump switches with integral operating warning lights & audible alarms
- Black mesh windscreen cover
- Controls for engine bay fire extinguisher system
- Cup holders
- Electronic single-lever throttle & gear controls for port & starboard engines
- Fuel gauges
- F-Drive multifunction display
- Garmin 16' GPSMapp chartplotter touchscreen
- Garmin GHP 20 autopilot system
- Garmin VHF marine radio
- Glass Bridge incorporating full engine instrumentation; tachometers, fuel gauges, temperature gauges, audible alarms & rudder position indicator
- High speed magnetic compass
- Independent helm & co-pilot seats
- Opening window
- Powered steering
- Red helm light
- Remote anchor winch controls

- Rudder position indicator
- Searchlight controls
- Trim tab controls
- USB socket

## Galley

- Chopping board to sink infill
- Cutlery storage
- Drawer fridge/freezer
- Electric induction hob
- Extractor fan
- Fire extinguisher
- First aid kit
- Integrated waste bin
- LED ceiling lights
- Microwave combi-oven
- Sink with hot & cold mixer tap
- Smoke alarm
- Solid Surface® worktop
- Storage cupboards & drawers
- Timber floor

## Saloon

- Carpet
- Dining table (fixed position)
- FAIRLINE EDITION crockery, cutlery & glassware
- Fusion® audio with wireless connectivity
- LED ceiling lights
- Sofas to port & starboard
- Sliding door to cockpit
- Stairs to lobby
- TV (50")
- Venetian blinds



# SQUADRON 58 (PROVISIONAL)

## Lobby

- Carpet
- Electrical control panel
- Handrail
- Lighting to stair risers
- Smoke alarm
- Space for (optional) domestic appliance

## Starboard Guest Cabin, Twin

- Bedding
- Bedside table
- Carpet
- Feature window with single opening porthole
- Full length berths (x 2) with interior sprung mattresses
- Full length mirror
- LED ceiling lights
- Reading lights
- Venetian blind
- Wardrobe

## VIP/Forward Cabin

- Bedding
- Bedside tables
- Carpet
- Escape hatch to foredeck with blind
- European king size bed with internally sprung mattress
- Eye level storage lockers
- Feature windows with single opening porthole
- Full length mirror
- LED ceiling lights
- Reading lights
- Upholstered bedhead & surround
- Venetian blinds
- Wardrobes

## VIP/Forward Cabin En Suite/Day Head

- Electric silent-flush freshwater toilet
- Extractor fan
- Feature window with opening porthole
- Full set of bathroom fittings
- Full standing height shower
- Mirror
- Shower tray automatic pump-out system
- Solid Surface® vanity unit with locker & basin
- Stowage locker
- Timber floor
- Towel rail
- Towel set
- Venetian blind

## Master Cabin

- Bedding
- Bedside tables
- Carpet
- European king size bed with internally sprung mattress
- Feature windows with opening portholes
- Fusion® audio
- LED ceiling lights
- Reading lights
- Sofa
- TV (43")
- Upholstered bedhead & surround
- Vanity unit/bureau with stool
- Venetian blinds
- Wardrobe

## Master Cabin En Suite

- Electric silent-flush freshwater toilet
- Extractor fan
- Eye-level storage lockets
- Feature window with single opening porthole
- Full set of bathroom fittings
- Full standing height shower with seat
- LED ceiling lights
- Mirror
- Shower tray automatic pump-out system
- Solid Surface® vanity unit with locker and basin
- Timber floor
- Towel rail
- Towel set
- Venetian blind

## Crew Cabin, Single (optional)

- Access from bathing platform
- AC power point
- Bedding
- CO2 detector
- Electric silent-flush freshwater toilet
- Fire extinguisher
- Full set of bathroom fittings
- Hanging locker
- LED ceiling lights
- Mirror
- Opening porthole
- Sink with hot & cold mixer tap
- Smoke alarm
- Timber floor
- Towel rail
- Towel set
- Wet room with shower

## Interior Décor

- Choice of interior finishes selected by Salt Design and the Fairline Design Studio
- Satin Oak timber



# SQUADRON 58 (PROVISIONAL)

## Hullform & Construction

- Antifouling protection to hull
- Design, layout & detailing by Salt Design and the Fairline Design Studio
- Feature hull windows with opening portholes
- Hull/deck joint bolted & bonded
- Integrally moulded engine bearers
- Isophthalic gel coat backed by isophthalic resin-rich powder-bound glass mat
- Moulded spray deflectors
- Polyurethane foam cores throughout deck for strength & thermal insulation
- Resin infused hull, internal liner structural headliner & deck
- White hull

## Engines & Sterngear

- Automatic bilge pumps for forward bilge, engine bay & rudder bay with manual 'on' override
- Automatic engine room fire extinguisher system with warnings at both helms
- Bow thrusters (electric, non-proportional)
- Dripless shaft seals
- Electric engine room fans
- Engine air intakes
- Engine room lights
- Engine room soundproofing
- Exhaust overheat warning system
- High capacity emergency manual bilge pump system
- Manganese bronze 'P' brackets
- Manganese bronze propellers contrarotating
- Seacocks on all inlets/outlets below waterline
- Stainless steel alloy shafts
- Trim tabs

## Electrical Systems

- 230 - 240V 50Hz (USA: 2x 110V [220V] 60Hz)
- All 240V, 24V & 12V circuits (where applicable) protected by circuit breakers with main electrical load control panel
- Fire shutdown system
- Generator (10kW)
- Heavy duty circuit breakers
- Isolating switches to all batteries
- 12 Volt
- Batteries - 2x heavy duty for voltage dropper from domestic batteries
- 24 Volt
- Batteries - 2x heavy duty batteries for engine starting
- Batteries - 6x heavy duty batteries wired in parallel supply for domestic services & port engine starting
- Circuit breaker for anchor winch
- Emergency battery coupling system
- 240 Volt
- Polarity check & earth leakage protection system
- Power points throughout the yacht (fed from shore power or generator)
- Regulated charger for domestic batteries
- Shore power supply
- Spare circuit breakers for optional equipment

## Fuel System

- Changeover valve system to permit each engine to draw fuel from & return fuel to either tank
- Emergency fuel shut-off valves accessible via cable-operated remote control
- High capacity water separators & fuel filters
- Individual fillers & vents to port & starboard
- Twin fuel tanks

## Freshwater System

- Automatic, pressurised supply
- Calorifier hot water system
- Water tank

## Black Waste

- Holding tank with electronic macerator pump-out

## Commissioning

- Commissioning, pre-delivery inspection & handover at the Fairline Commissioning Centre, Ipswich UK