



# SQUADRON 50

We're going places. Join us.





## ARRIVING IN STYLE. IT'S READY WHEN YOU ARE.

---

An established motor yacht range like the sublime 48ft series demands to have its legacy continued. And the Squadron 50, the flybridge version of our exciting new 50ft range, is here to continue the journey.

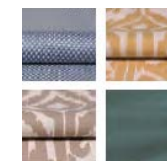
Every consideration has gone into the design of the Squadron 50. The flybridge has been configured to offer all the space you need to enjoy a leisurely breakfast around the teak dining table, before claiming the sunbed and your place in the sun. There is a stunning anthracite roof, while on the inside, a beautiful range of contemporary colours offer a touch of understated elegance to the expertly designed space.

Cruising to any destination will happen on your command, thanks to the twin Volvo IPS 650 or 700 engines. But there is something equally as thrilling at your fingertips. Our first ever Premium Pack option, with a host of specifications including high capacity air conditioning, teak-laid flooring on the flybridge and a submersible bathing platform to name just a few. This is a yacht ready to take you places. And take you there in style.

# INTERIOR DESIGNS ON ANOTHER LEVEL

In the spirit of building the perfect yacht at every possible level, we have also carefully created four different interior design schemes for you to choose from:

## Amalfi



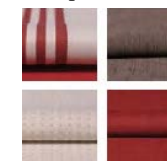
Inspired by Liguria's local architecture, this scheme exudes the sunny warmth synonymous with fragrant Italian lemon trees and the umbrella-lined shores of the Amalfi Coast.

## Capri



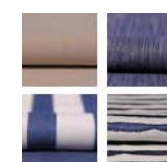
Understated, earthy colours, effortlessly combined with rich natural textures. All the hallmarks of an interior design collection that is as gentle as the Mediterranean breeze.

## Hamptons



Evoking elegant vintage design cues, whilst offering a bold and contemporary interpretation of the luxury that was once the preserve of America's East Coast.

## St. Tropez



An ode to the sea where all manner of deep, oceanic blues tastefully swirl with muted greys, delicate creams and classic nautical motifs.



# CAREFULLY CONSIDERED PROPORTIONS

## Principal Dimensions

Length overall (inc. pulpit)	50'8" (15.46m)
Beam (inc. gunwale)	14'2" (4.31m)
Draft	3'10" (1.17m) unloaded
Airdraft	18'2" (5.55m)
Transport height	16'0" (4.87m)
Dry weight (approx.)	13.28 imp. tons/14.88 US tons (13,500kg)
Fuel capacity	288 gallons/346 US gallons (1,309 litres)
Water capacity (inc. calorifier)	106 gallons/127 US gallons (482 litres)
Sleeps	4 – 7
Classification	CE Category B
Capacity	16 persons

## Engines and Performance

2 x Volvo Penta IPS650 D6-480, diesel (960hp): 31 knots

2 x Volvo Penta IPS700 D8-550, diesel (1100hp): 32 knots



[Click here for full specification](#)

## SQUADRON 50 FLYBRIDGE



## SQUADRON 50 MAIN DECK



## SQUADRON 50 MAIN DECK



Galley up (cost option)

## SQUADRON 50 LOWER DECK

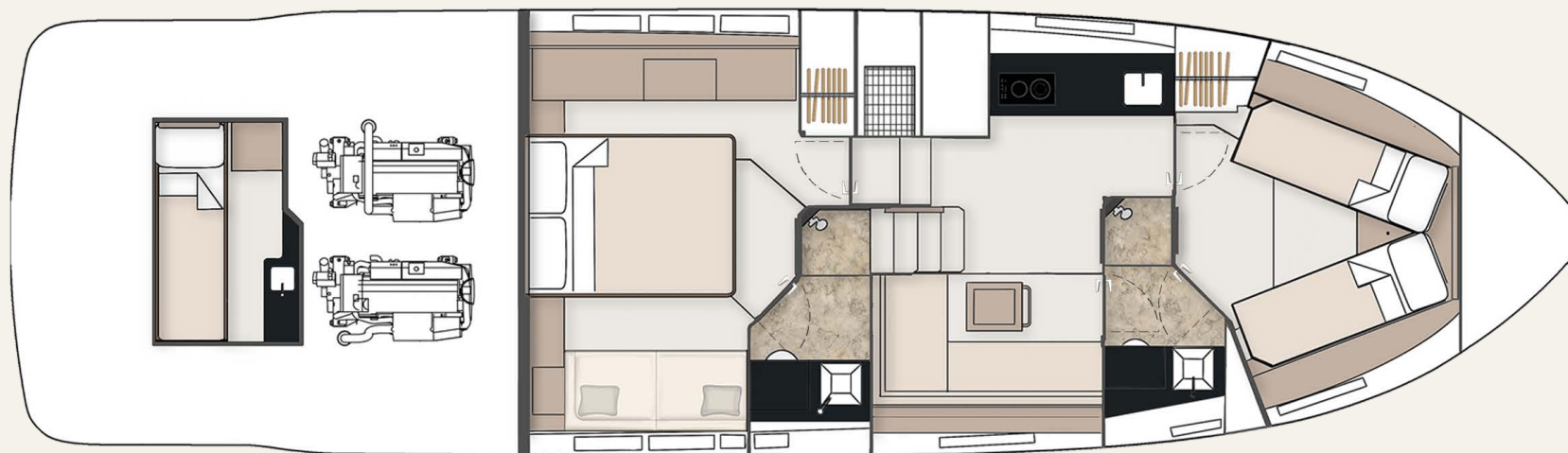


**2 Cabin**



**3 Cabin (cost option)**

## SQUADRON 50 LOWER DECK



2 Cabin with Single Crew (cost option)



3 Cabin with Single Crew (cost option)



## JOIN THE FAIRLINE FAMILY.

Visit **f-line.com** and start to  
see a world of possibilities.

**Come to us for adventure. Come to us for design  
and heritage. And come to us for forward thinking.  
But most of all, come and experience our  
acclaimed Dealership network.**

Each Appointed Fairline Dealer is a professional, thriving business,  
working with your best interests at heart and using their intimate  
local knowledge to your advantage. Yes, they will provide you with  
a trusted service, but also friendship and care beyond the call of duty.



Fairline Argentina  
Fairline Australia  
Fairline Baltic  
Fairline Benelux & West Germany  
Fairline Beirut  
Fairline Brazil  
Fairline Channel Islands  
Fairline Chesapeake  
Fairline Côte d'Azur  
Fairline Croatia

Fairline Denia  
Fairline Eastbourne  
Fairline Eastern Canada  
Fairline Egypt  
Fairline Empuriabrava  
Fairline Finland  
Fairline Florida  
Fairline Great Lakes  
Fairline Greece  
Fairline Hong Kong  
Fairline Ibiza

Fairline India  
Fairline Israel  
Fairline Italy  
Fairline Korea  
Fairline London  
Fairline Maldives  
Fairline Mallorca (East)  
Fairline Mallorca (North)  
Fairline Mallorca (South)  
Fairline Malta  
Fairline Menorca

Fairline Mexico  
Fairline Middle East  
Fairline Monaco  
Fairline New York  
Fairline New Zealand  
Fairline Northwest (USA)  
Fairline Norway  
Fairline Philippines  
Fairline Poland  
Fairline Poole  
Fairline Port d'Hiver

Fairline Portugal  
Fairline Russia  
Fairline Singapore  
Fairline South China  
Fairline South Germany & Austria  
Fairline Southampton  
Fairline Southern Spain  
Fairline Sweden  
Fairline Switzerland  
Fairline Turkey  
Fairline Ukraine

© FAIRLINE YACHTS LTD 2021. ALL RIGHTS RESERVED. FAIRLINE AND F-LINE ARE REGISTERED TRADEMARKS OF FAIRLINE YACHTS LTD. TOGETHER WITH ALL TEXT AND IMAGES CONTAINED IN THIS PUBLISHED MATERIAL, THEY ARE PROTECTED BY COPYRIGHT AND MAY NOT BE PRODUCED IN ANY FORM WITHOUT THE EXPRESS WRITTEN PERMISSION OF THE COPYRIGHT OWNERS. Published by Fairline Yachts Ltd, Oundle, PE8 4HN, England. Fairline Yachts constantly seek ways of improving specifications, design and production. Therefore, alterations take place on a continuous basis. Whilst every effort is made to produce up-to-date literature, the descriptions, specifications, illustrations and photographs in this brochure should not be regarded as a definitive guide to current specifications, nor does it constitute an offer for the sale of any particular boat. Appointed dealers are not agents of Fairline Yachts Ltd & are not authorised to commit Fairline Yachts Ltd by any express or implied undertaking or representation. Performance estimates are given in good faith, but are in no way guaranteed for any particular boat. Dirt on the bottom of the boat, damage to propellers, engine tuning, external water and air temperatures and the weight of crew, fuel and water carried can all adversely affect performance. For these and other reasons we can give no performance guarantees.

