



TARGA 45 OPEN

We're going places. Join us.



POWERFUL, VERSATILE AND LUXURIOUS. THE ESSENCE OF FAIRLINE, CAPTURED.

Renowned superyacht designer Alberto Mancini has designed the Targa 45 OPEN using his unmistakable signature style. And it is something you will see and feel, above or below deck.

Svelte, sophisticated lines evoking that unmistakable Riviera-glamour, married with flawless engineering and unbridled performance.

Step aboard, and all that style and luxury persists, with a spacious cockpit... exactly what you would expect from a craft built for daily escapades to dazzling private beaches or secluded coves.

BEAUTIFUL LINES STUNNING FEATURES

Despite its low profile, the Targa 45 OPEN more than manages to fit in a magnificent bank of innovative features, including:

Specification highlights

- 2 cabin / 2 heads
- Choice of mid or forward master cabin
- Full standing headroom throughout cabins
- Single piece windscreen
- Hardtop with electric sliding canvas roof
- Large forward and aft sunbeds
- Garage for Williams 280 MiniJet

Optional equipment highlights

- Seakeeper® 3 gyroscopic stabiliser
- Sofa to mid cabin
- Blue or white exterior mood lighting
- Volvo Dynamic Positioning System
- High capacity air conditioning





AN OPEN INVITATION
TO EXPERIENCE PURE JOY







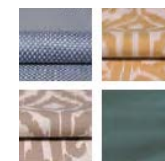




BEAUTIFULLY FINISHED INSIDE AND OUT

In the spirit of building the perfect yacht at every possible level, we have also carefully created four different interior design schemes for you to choose from:

Amalfi



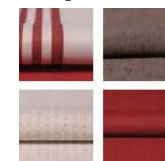
Inspired by Liguria's local architecture, this scheme exudes the sunny warmth synonymous with fragrant Italian lemon trees and the umbrella-lined shores of the Amalfi Coast.

Capri



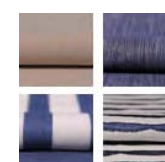
Understated, earthy colours, effortlessly combined with rich natural textures. All the hallmarks of an interior design collection that is as gentle as the Mediterranean breeze.

Hamptons



Evoking elegant vintage design cues, whilst offering a bold and contemporary interpretation of the luxury that was once the preserve of America's East Coast.

St. Tropez



An ode to the sea where all manner of deep, oceanic blues tastefully swirl with muted greys, delicate creams and classic nautical motifs.



CAREFULLY CONSIDERED PROPORTIONS

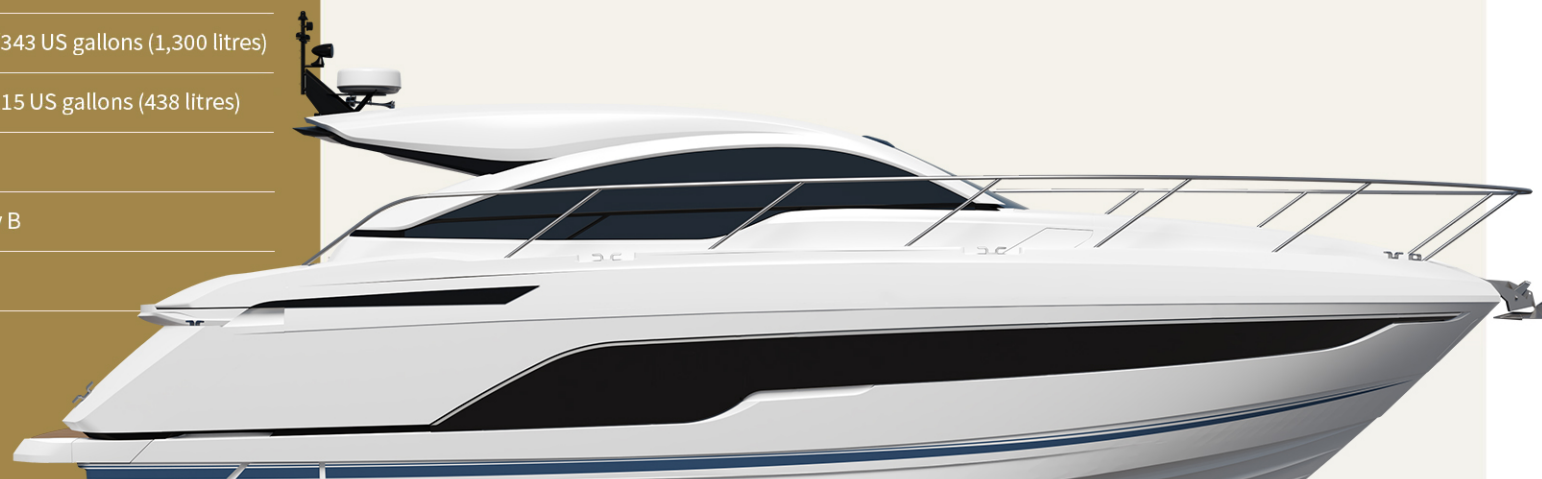
Principal Dimensions

Length overall	47'7" (14.53m)
Beam (inc. gunwale)	14'2" (4.32m)
Draught	3'8" (1.15m) loaded
Height above waterline	15'5" (4.74m)
Transport height	15'6" (4.76m)
Dry weight	12.30 imp. tons/13.77 US tons (12,500kg)
Fuel capacity	286 gallons/343 US gallons (1,300 litres)
Water capacity (inc. calorifier)	96 gallons/115 US gallons (438 litres)
Sleeps	4
Classification	CE Category B
Capacity	12 persons

Engines and Performance

2 x Volvo Penta, IPS600 D6-440, diesel (880hp): 32 knots

2 x Volvo Penta, IPS650 D6-480, diesel (960hp): 34 knots



[Click here for full specification](#)

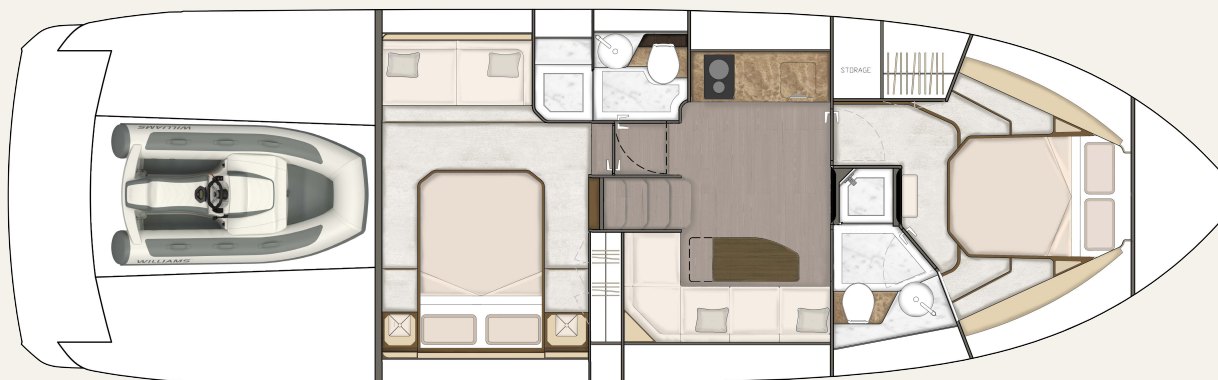
TARGA 45 OPEN MAIN DECK



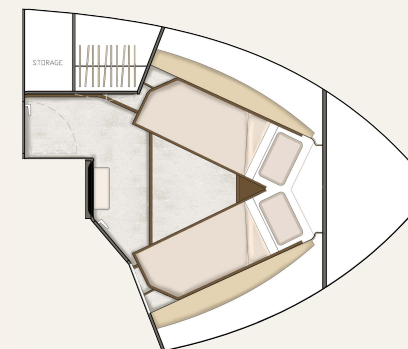
TARGA 45 OPEN LOWER DECK



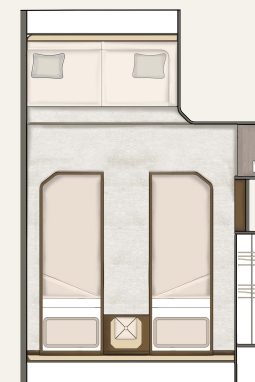
Mid Master Cabin



Forward Master Cabin (cost option)



Forward cabin
scissor berth
(cost option)



Mid cabin
sliding beds
(cost option)



JOIN THE FAIRLINE FAMILY.

Visit **fairline.com** and start to
see a world of possibilities.

Come to us for adventure. Come to us for design
and heritage. And come to us for forward thinking.
But most of all, come and experience our
acclaimed Dealership network.

Each Appointed Fairline Dealer is a professional, thriving business,
working with your best interests at heart and using their intimate
local knowledge to your advantage. Yes, they will provide you with
a trusted service, but also friendship and care beyond the call of duty.



Fairline Argentina
Fairline Australia
Fairline Baltic
Fairline Benelux & West Germany
Fairline Beirut
Fairline Brazil
Fairline Channel Islands
Fairline Chesapeake
Fairline Côte d'Azur
Fairline Croatia
Fairline Cyprus

Fairline Denia
Fairline Eastbourne
Fairline Eastern Canada
Fairline Egypt
Fairline Empuriabrava
Fairline Finland
Fairline Florida
Fairline Great Lakes
Fairline Greece
Fairline Hong Kong
Fairline Ibiza

Fairline India
Fairline Israel
Fairline Italy
Fairline Korea
Fairline London
Fairline Maldives
Fairline Mallorca (East)
Fairline Mallorca (North)
Fairline Mallorca (South)
Fairline Malta
Fairline Menorca

Fairline Mexico
Fairline Middle East
Fairline Monaco
Fairline New York
Fairline New Zealand
Fairline Northwest (USA)
Fairline Norway
Fairline Philippines
Fairline Poland
Fairline Poole
Fairline Portugal

Fairline Russia
Fairline Singapore
Fairline South China
Fairline South Germany & Austria
Fairline Southampton
Fairline Southern Spain
Fairline Sweden
Fairline Switzerland
Fairline Turkey
Fairline Ukraine

© FAIRLINE YACHTS LTD 2021. ALL RIGHTS RESERVED. FAIRLINE AND TARGA ARE REGISTERED TRADEMARKS OF FAIRLINE YACHTS LTD. TOGETHER WITH ALL TEXT AND IMAGES CONTAINED IN THIS PUBLISHED MATERIAL, THEY ARE PROTECTED BY COPYRIGHT AND MAY NOT BE PRODUCED IN ANY FORM WITHOUT THE EXPRESS WRITTEN PERMISSION OF THE COPYRIGHT OWNERS. Published by Fairline Yachts Ltd, Oundle, PE8 4HN, England. Fairline Yachts constantly seek ways of improving specifications, design and production. Therefore, alterations take place on a continuous basis. Whilst every effort is made to produce up-to-date literature, the descriptions, specifications, illustrations and photographs in this brochure should not be regarded as a definitive guide to current specifications, nor does it constitute an offer for the sale of any particular boat. Performance estimates are given in good faith, but are in no way guaranteed for any particular boat. Dirt on the bottom of the boat, damage to propellers, engine tuning, external water and air temperatures and the weight of crew, fuel and water carried can all adversely affect performance. For these and other reasons we can give no performance guarantees. Appointed dealers are not agents of Fairline Yachts Ltd & are not authorised to commit Fairline Yachts Ltd by any express or implied undertaking or representations.