



SQUADRON 53

We're going places. Join us.





THE SQUADRON 53 A DESIGN MASTERPIECE

Let it be said with undeniable certainty that nothing was left to chance when it came to designing and building the Squadron 53.

Every precisely-placed curve, every elegant edge, every understated shade of colour has its place in the grand scheme of things. And simply because absolute attention to detail and a genuine appreciation of quality go hand-in-hand.

For us, painstakingly handcrafting an object of luxury such as the Squadron 53 is a matter of personal enjoyment and inner satisfaction... both ours and yours. In fact, you have just to run your hand over the perfectly matched grain of the 53's woodwork, or take in the graceful arch of its swept flybridge, or immerse yourself in a space so thoroughly considered to know it's all true.

ALBERTO MANCINI'S VISION FAIRLINE'S LONG-STANDING HERITAGE

When we embarked on our new design vision for the Squadron 53, we made a conscious decision to be bold. We even dared to reimagine the classic Fairline form in collaboration with one of Italy's most exciting yacht designers, Alberto Mancini. But we never did so at the expense of our uncompromising, engineering heritage.

Which means every feature on the Squadron 53 – whether you can immediately see it, or not – has been carefully thought about and assembled with the entire yacht in mind.

Specification highlights

- Exterior styling by Alberto Mancini
- Foredeck seating
- Cockpit sunpad
- Skylight above lower helm
- 3 or 4 cabin layouts
- Single level floor throughout the main deck
- Full standing height in mid master cabin

Optional equipment highlights

- Submersible bathing platform with 500kg lifting capacity
- Seakeeper® 6 gyroscopic stabiliser
- Single berth crew cabin
- Marble upgrade throughout the interior
- Foredeck sky canopy











The image shows the interior of a yacht's cockpit. On the right, there is a helm station with a steering wheel, various gauges, and control switches. Two leather-upholstered seats are positioned behind the helm. To the left of the helm, there is a seating area with a light-colored cushion and a decorative blue and white patterned pillow. A small table in front of the seating area holds a silver teapot and a cup. The background features a large window with a view of the ocean and a sunset sky. The ceiling has recessed lighting and a large skylight.

DESIGNED TO TAKE
YOUR BREATH AWAY

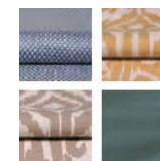




EVEN OUR DESIGN SCHEMES HAVE A DESTINATION IN MIND

In the spirit of building the perfect yacht at every possible level, we have also carefully created four different interior design schemes for you to choose from:

Amalfi



Inspired by Liguria's local architecture, this scheme exudes the sunny warmth synonymous with fragrant Italian lemon trees and the umbrella-lined shores of the Amalfi Coast.

Capri



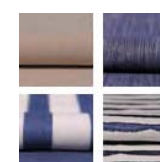
Understated, earthy colours, effortlessly combined with rich natural textures. All the hallmarks of an interior design collection that is as gentle as the Mediterranean breeze.

Hamptons



Evoking elegant vintage design cues, whilst offering a bold and contemporary interpretation of the luxury that was once the preserve of America's East Coast.

St. Tropez



An ode to the sea where all manner of deep, oceanic blues tastefully swirl with muted greys, delicate creams and classic nautical motifs.



BEAUTIFULLY BALANCED PROPORTIONS

Principal Dimensions

Length overall (exc. pulpit)	53'6" (16.32m)
Beam (inc. gunwale)	14'10" (4.52m)
Draught	3'11" (1.20m)
Height above waterline	18'2" (5.56m)
Transport height	17'1" (5.15m)
Dry weight (approx.)	21.16 imp. tons/23.69 US tons (21,000kg)
Fuel capacity	530 gallons/637 US gallons (2,412 litres)
Water capacity (inc. calorifier)	120 gallons/145 US gallons (550 litres)
Sleeps	6 – 9
Classification	CE Category B
Capacity	16 persons

Engines and Performance

2 x Volvo Penta D11-725 shaft drive, diesel (1450hp): 32 knots



[Click here for full specification](#)

SQUADRON 53 FLYBRIDGE



SQUADRON 53 MAIN DECK



Sofa to starboard



Sideboard to starboard

SQUADRON 53 MAIN DECK

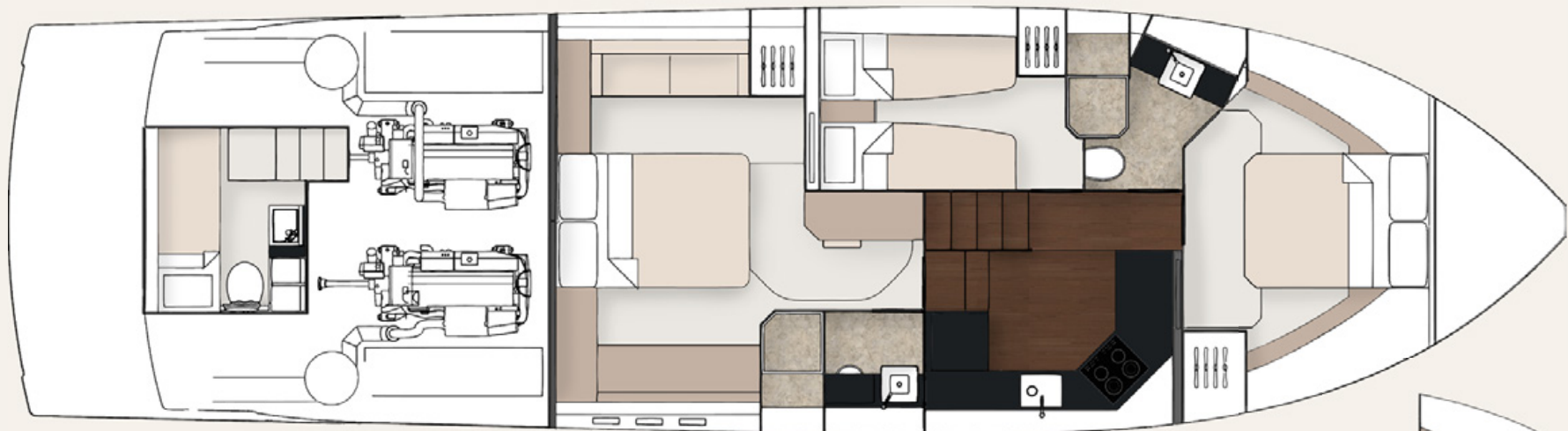


Galley up aft (cost option)

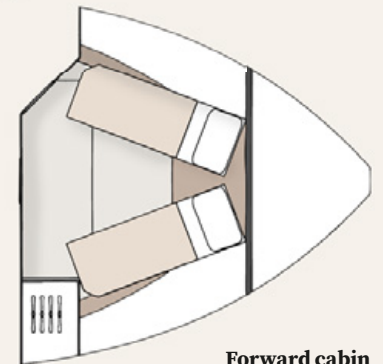


Galley up forward (cost option)

SQUADRON 53 LOWER DECK



3 Cabin with optional single crew cabin

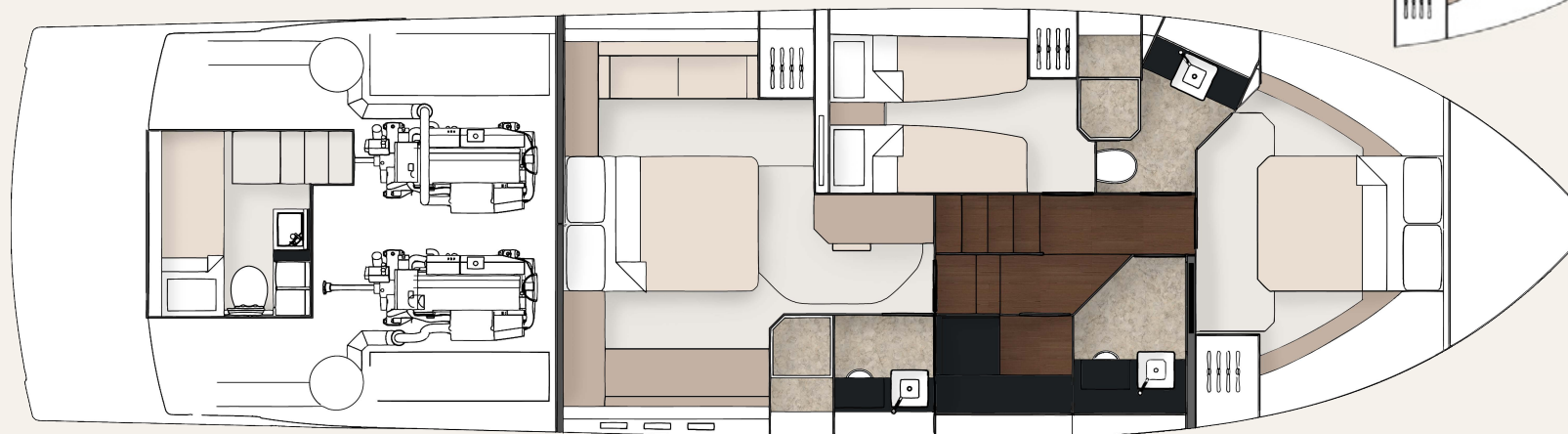


Forward cabin
scissor berth
(cost option)

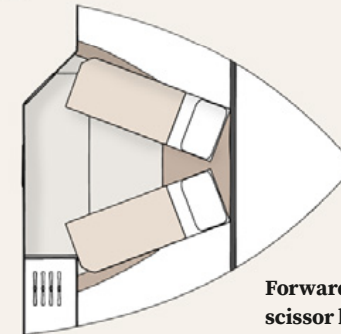
SQUADRON 53 LOWER DECK



4 Cabin with optional single crew cabin



3 Cabin with day head & utility (cost option)



**Forward cabin
scissor berth
(cost option)**



JOIN THE FAIRLINE FAMILY.

Visit **fairline.com** and start to
see a world of possibilities.

Come to us for adventure. Come to us for design
and heritage. And come to us for forward thinking.
But most of all, come and experience our
acclaimed Dealership network.

Each Appointed Fairline Dealer is a professional, thriving business,
working with your best interests at heart and using their intimate
local knowledge to your advantage. Yes, they will provide you with
a trusted service, but also friendship and care beyond the call of duty.



Fairline Argentina
Fairline Australia
Fairline Baltic
Fairline Benelux & West Germany
Fairline Beirut
Fairline Brazil
Fairline Channel Islands
Fairline Chesapeake
Fairline Côte d'Azur
Fairline Croatia

Fairline Denia
Fairline Eastbourne
Fairline Eastern Canada
Fairline Egypt
Fairline Empuriabrava
Fairline Finland
Fairline Florida
Fairline Great Lakes
Fairline Greece
Fairline Hong Kong
Fairline Ibiza

Fairline India
Fairline Israel
Fairline Italy
Fairline Korea
Fairline London
Fairline Maldives
Fairline Mallorca (East)
Fairline Mallorca (North)
Fairline Mallorca (South)
Fairline Malta
Fairline Menorca

Fairline Mexico
Fairline Middle East
Fairline Monaco
Fairline New York
Fairline New Zealand
Fairline Northwest (USA)
Fairline Norway
Fairline Philippines
Fairline Poland
Fairline Poole
Fairline Portugal

Fairline Russia
Fairline Singapore
Fairline South China
Fairline South Germany & Austria
Fairline Southampton
Fairline Southern Spain
Fairline Sweden
Fairline Switzerland
Fairline Turkey
Fairline Ukraine