



TARGA 53 GT

We're going places. Join us.



EVERY DETAIL SAYS 'ENJOY ME' – EVERY SPACE SAYS 'BE ENTERTAINED'

You've stocked the provisions, chosen a bay to explore and your guests are on board. The muscular power and grace of the Targa 53 GT awaits to take you all on an exhilarating journey.

From the visual impact of its bold and beautiful design, the Targa 53 GT has been carefully considered with uninterrupted freedom in mind. Every detail of the interior is thoughtfully created for maximum space, light and enjoyment.

Expert engineering gives exceptional handling, with a top speed in excess of 30 knots. Your party can relax on the open-plan main deck, with its spacious cockpit and luxuriously appointed saloon, sleep soundly in the spacious cabins below, or shower down after a swim – all in perfect harmony.

INTUITIVELY READY FOR EVERY JOURNEY

From the generous layout to the power of the engines, the Targa 53 GT has every little detail covered for enjoyable explorations on the high seas.

Specification highlights

- Multiple layout options to suit your requirements
- Cockpit seating with sunbed conversion
- 40" LCD television to saloon
- Teak cockpit floor
- Powered hardtop

Optional equipment highlights

- Proportional electronic bow and stern thrusters
- Integrated, powered canopy over aft sun bed
- Marble features with leather inlays to interior
- Seakeeper® 6 gyroscopic stabiliser





THE TARGA 53 GT GRACEFULLY
PROVIDES EVERYTHING FOR
THE PERFECT ADVENTURE





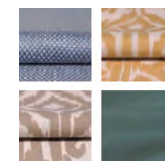




THE CHOICE OF INTERIOR IS EQUALLY EXTENSIVE

In the spirit of building the perfect yacht at every possible level, we have also carefully created four different interior design schemes for you to choose from:

Amalfi



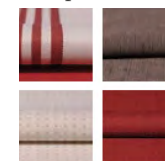
Inspired by Liguria's local architecture, this scheme exudes the sunny warmth synonymous with fragrant Italian lemon trees and the umbrella-lined shores of the Amalfi Coast.

Capri



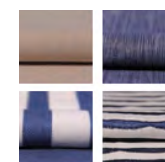
Understated, earthy colours, effortlessly combined with rich natural textures. All the hallmarks of an interior design collection that is as gentle as the Mediterranean breeze.

Hamptons



Evoking elegant vintage design cues, whilst offering a bold and contemporary interpretation of the luxury that was once the preserve of America's East Coast.

St. Tropez



An ode to the sea where all manner of deep, oceanic blues tastefully swirl with muted greys, delicate creams and classic nautical motifs.



PROPORTIONS BALANCED FOR MAXIMUM SPACE

Principal Dimensions

Length overall (exc. pulpit)	53'6" (16.32m)
Beam (inc. gunwale)	14'10" (4.52m)
Draught	3'11" (1.20m) unloaded
Height above waterline	15'1" (4.60m)
Transport height	15'11" (4.87m)
Dry weight (approx.)	19.19 imp. tons/21.49 US tons (19,500kg)
Fuel capacity	530 gallons/637 US gallons (2,412 litres)
Water capacity (inc. calorifier)	120 gallons/145 US gallons (550 litres)
Sleeps	6 – 9
Classification	CE Category B
Capacity	16 persons



Engines and Performance

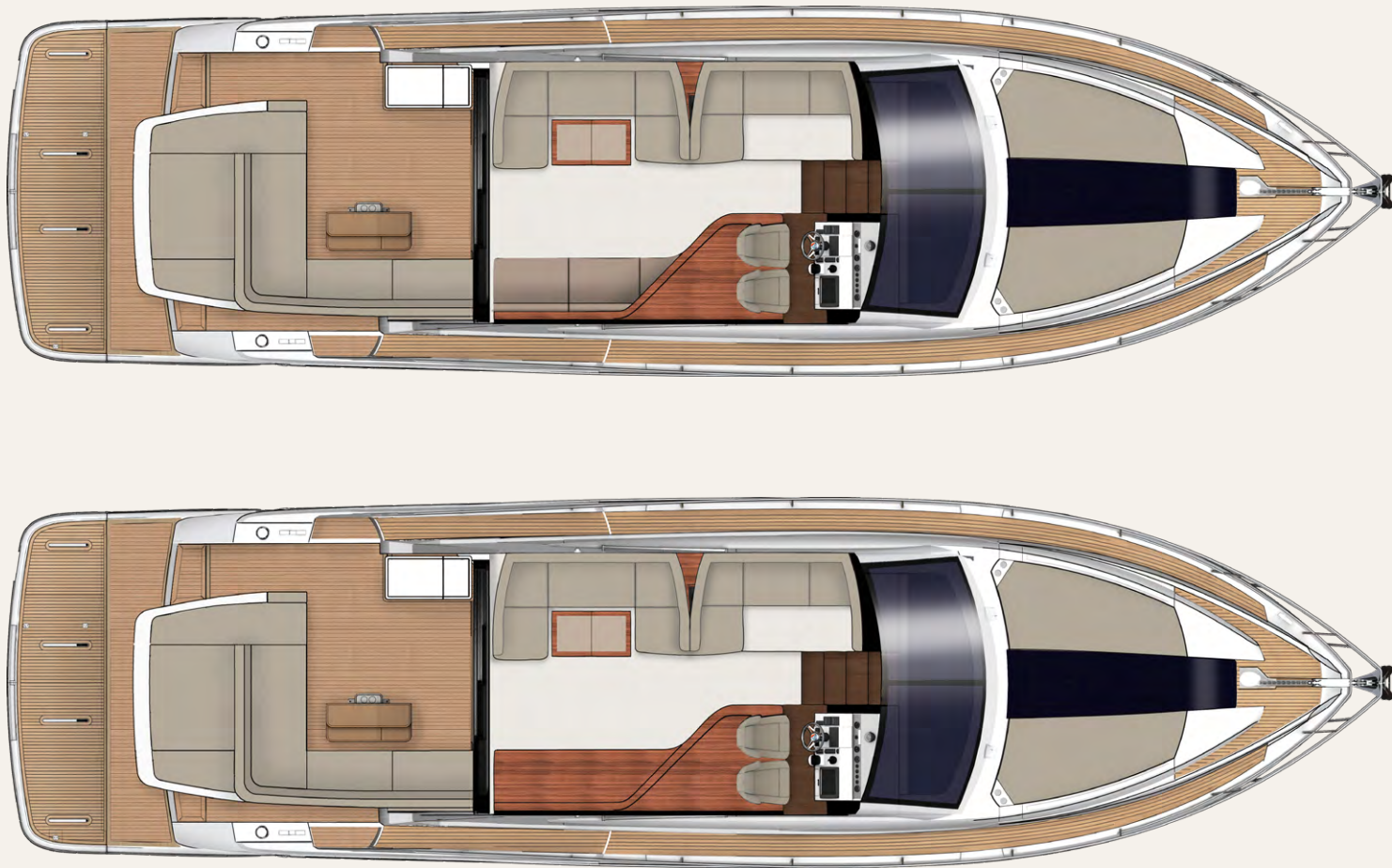
2 x Volvo Penta D11-725 shaft drive, diesel (1450hp): 32 knots

TARGA 53 GT MAIN DECK

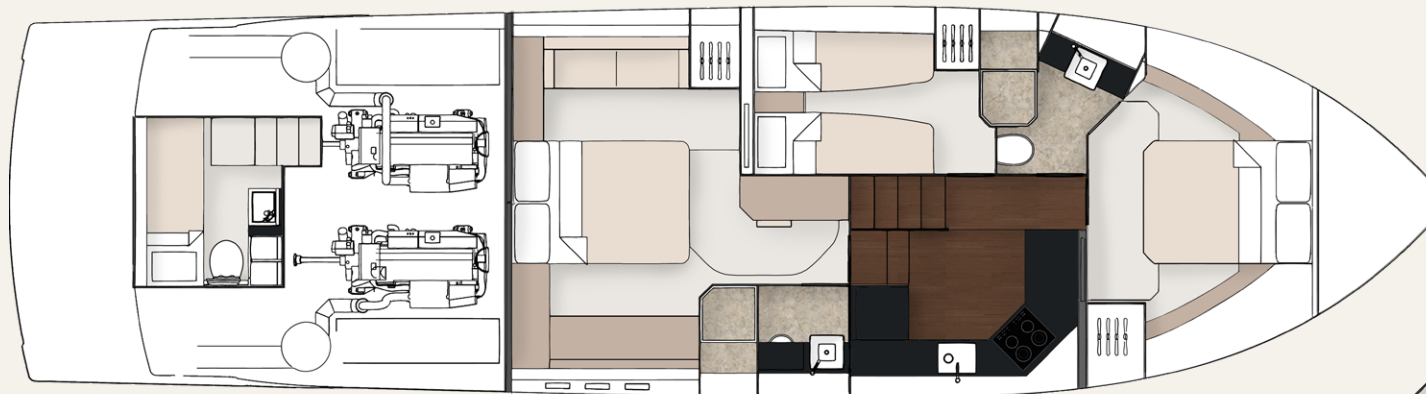


Galley up (option)

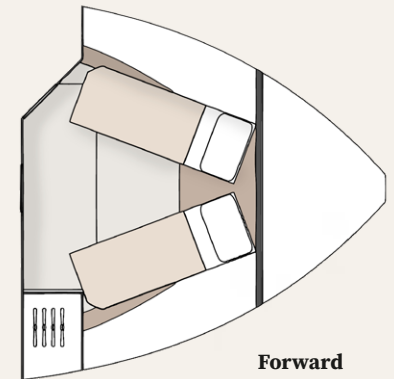
TARGA 53 GT MAIN DECK



TARGA 53 GT LOWER DECK

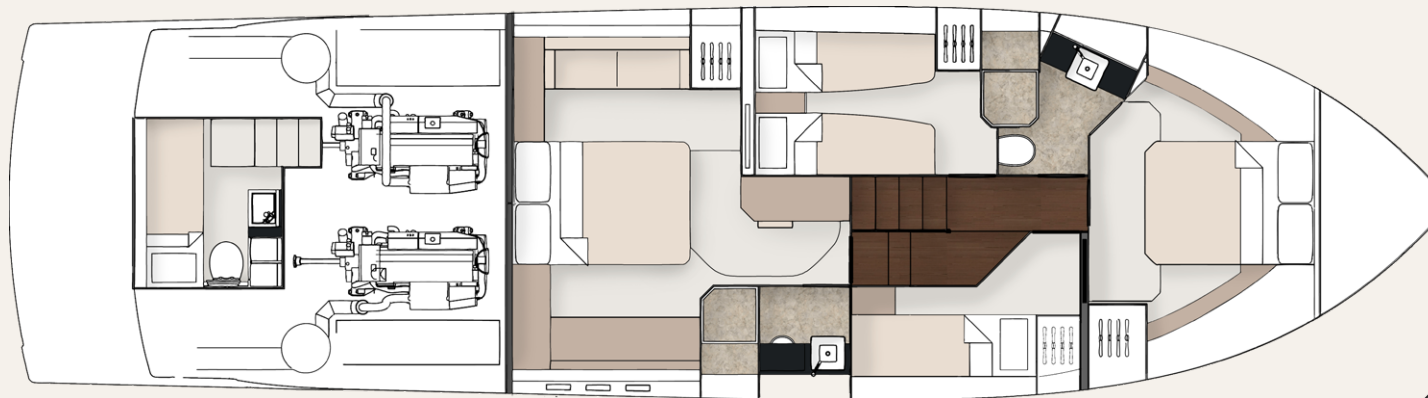


3 Cabin

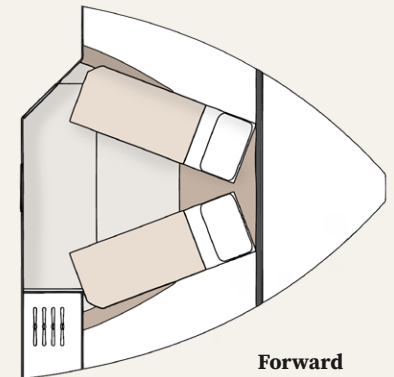


**Forward
cabin scissor
berth option**

TARGA 53 GT LOWER DECK



4 Cabin



**Forward
cabin scissor
berth option**



JOIN THE FAIRLINE FAMILY.

Visit **fairline.com** and start to see a world of possibilities.

Come to us for adventure. Come to us for design and heritage. And come to us for forward thinking. But most of all, come and experience our acclaimed Dealership network.

Each Appointed Fairline Dealer is a professional, thriving business, working with your best interests at heart and using their intimate local knowledge to your advantage. Yes, they will provide you with a trusted service, but also friendship and care beyond the call of duty.



Fairline Argentina
Fairline Australia
Fairline Baltic
Fairline Benelux & West Germany
Fairline Beirut
Fairline Brazil
Fairline Channel Islands
Fairline Chesapeake
Fairline Côte d'Azur
Fairline Croatia
Fairline Cyprus

Fairline Denia
Fairline Eastbourne
Fairline Eastern Canada
Fairline Egypt
Fairline Empuriabrava
Fairline Finland
Fairline Florida
Fairline Great Lakes
Fairline Greece
Fairline Hong Kong
Fairline Ibiza

Fairline India
Fairline Israel
Fairline Italy
Fairline Korea
Fairline London
Fairline Maldives
Fairline Mallorca (East)
Fairline Mallorca (North)
Fairline Mallorca (South)
Fairline Malta
Fairline Menorca

Fairline Mexico
Fairline Middle East
Fairline Monaco
Fairline New York
Fairline New Zealand
Fairline Northwest (USA)
Fairline Norway
Fairline Philippines
Fairline Poland
Fairline Poole
Fairline Portugal

Fairline Russia
Fairline Singapore
Fairline South China
Fairline South Germany & Austria
Fairline Southampton
Fairline Southern Spain
Fairline Sweden
Fairline Switzerland
Fairline Turkey
Fairline Ukraine

© FAIRLINE YACHTS LTD 2020. ALL RIGHTS RESERVED. FAIRLINE AND TARGA ARE REGISTERED TRADEMARKS OF FAIRLINE YACHTS LTD. TOGETHER WITH ALL TEXT AND IMAGES CONTAINED IN THIS PUBLISHED MATERIAL, THEY ARE PROTECTED BY COPYRIGHT AND MAY NOT BE PRODUCED IN ANY FORM WITHOUT THE EXPRESS WRITTEN PERMISSION OF THE COPYRIGHT OWNERS. Published by Fairline Yachts Ltd, Oundle, PE8 4HN, England. Fairline Yachts constantly seek ways of improving specifications, design and production. Therefore, alterations take place on a continuous basis. Whilst every effort is made to produce up-to-date literature, the descriptions, specifications, illustrations and photographs in this brochure should not be regarded as a definitive guide to current specifications, nor does it constitute an offer for the sale of any particular boat. Performance estimates are given in good faith, but are in no way guaranteed for any particular boat. Dirt on the bottom of the boat, damage to propellers, engine tuning, external water and air temperatures and the weight of crew, fuel and water carried can all adversely affect performance. For these and other reasons we can give no performance guarantees.