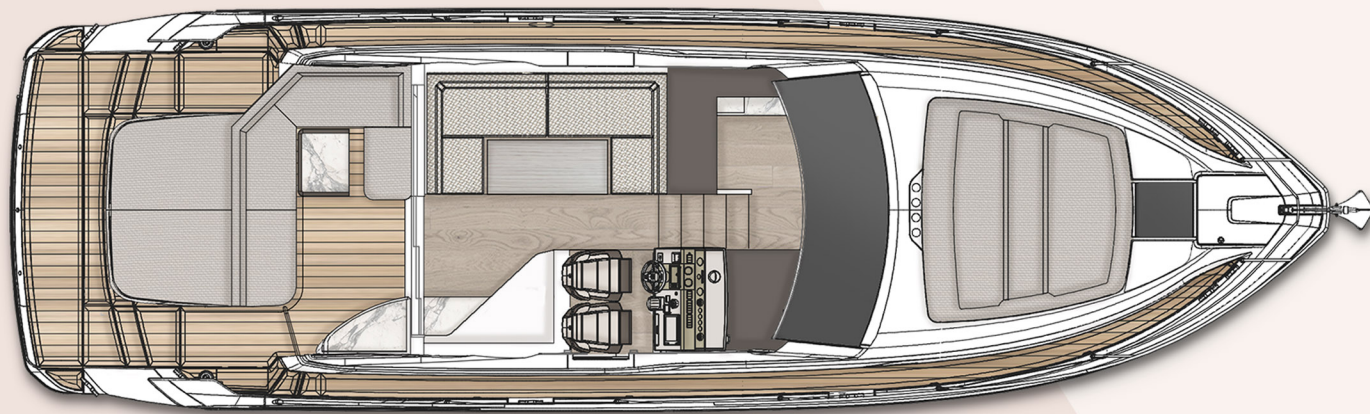
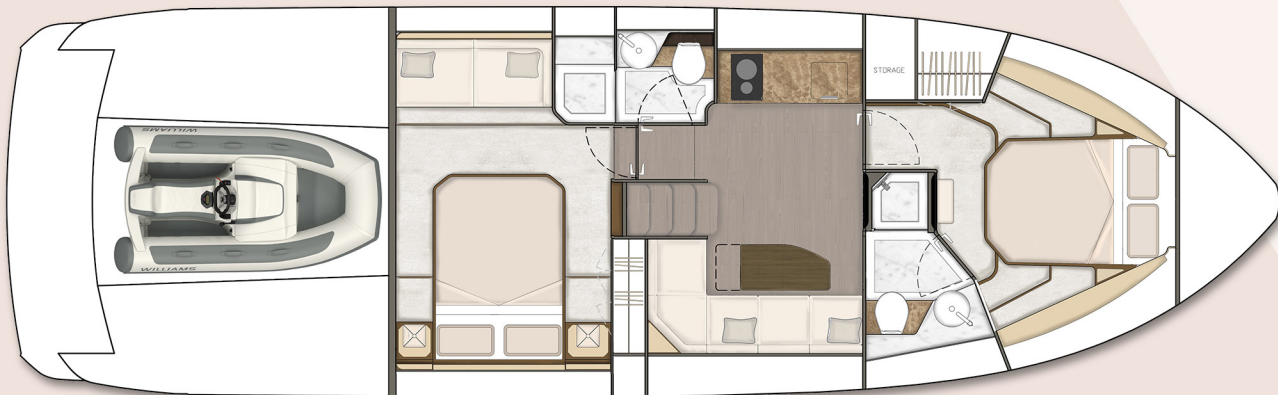




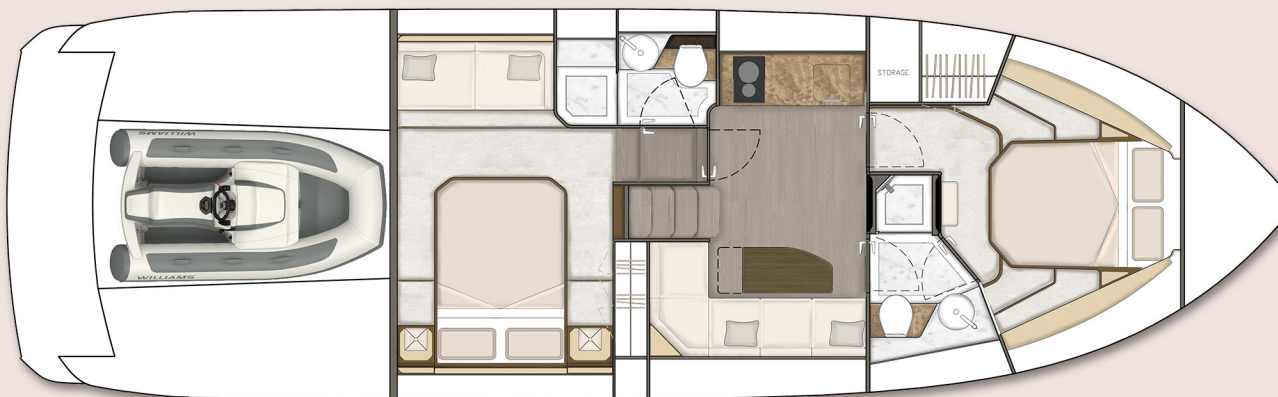
# TARGA 45 GT



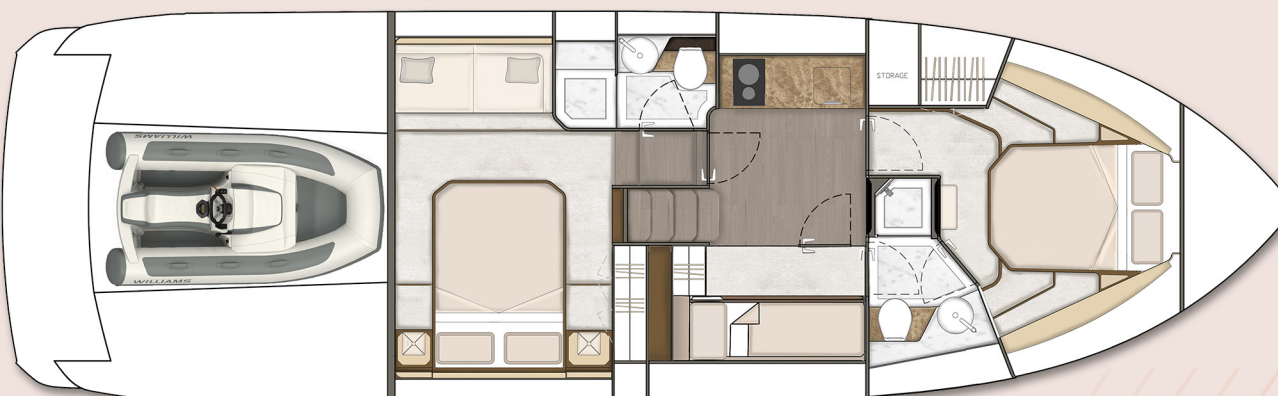
- Main Deck



- 2 Cabin - Forward Master



- 2 Cabin - Mid Master (optional)



- 3 Cabin - Mid Master (optional)

## Principal Dimensions

Length overall (incl. pulpit):	47'7" (14.53m)
Length of hull:	43'3" (13.2m)
Beam (incl. gunwale):	14'2" (4.32m)
Draft:	3'8" (1.15m) loaded
Airdraft:	15'5" (4.74m)
Transport height:	15'6" (4.76m)
Berths:	4 - 6
Fuel capacity:	286 gallons / 343 US gallons (1,300 litres)
Water capacity (incl. calorifier):	88 gallons / 105 US gallons (400 litres)
Type approval:	CE Category B
Capacity:	12 people

## Engines & Performance

2 x Volvo Penta IPS600 DS-440	2 x Volvo Penta IPS650 D6-480
Max. Power: 880 hp	Max. Power: 960 hp
Drive: IPS	Drive: IPS
Fuel: Diesel	Fuel: Diesel
Max. Speed: 32 knots	Max. Speed: 34 knots

# TARGA 45 GT

## Deck

- Anchor winch & controls
- Calibrated galvanised anchor chain (40m)
- Chain stopper (10mm)
- Carbon fibre ensign staff
- Fenders (x6)
- Full set of IMCO navigation lights
- Garage (to fit Williams 280 MiniJet)
- Hot & cold water transom shower
- Moulded non-slip deck surface
- Riding light
- Rubbing strake
- Self-stowing Delta® anchor (20kg)
- Stainless steel bow fairleads
- Stainless steel bow, spring & stern cleats
- Stainless steel pulpit rail
- Stainless steel stemhead roller
- Stainless steel transom wing cleats
- Teak laid bathing platform (fixed height)
- Toughened glass curved single piece windscreen
- Twin horns
- Water filler
- Windscreen washers / wipers

## Helm Position

- Autopilot
- Bilge pump switches with integral operating warning lights & audible alarms
- Twin helm seats
- Controls for engine bay fire extinguisher system
- Cup holders
- Electronic single-lever throttle & gear controls

- Folding foot plinth
- Full digital engine instrumentation including; tachometers, oil pressure gauges, temperature gauges, audible alarms & engine hour meters
- Garmin GMI 20 instrument display
- Garmin VHF marine radio
- High-speed magnetic compass
- IPS joystick
- Opening window (manual operation)
- Remote anchor winch controls
- Searchlight control
- USB socket
- Volvo 7" diagnostic display

## Electrical Systems

- All 240V, 24V & 12V circuits (USA: 2x 110V [220V] 60Hz) protected by circuit breakers with main electrical load control panel
- Electrical sockets
- Generator
- Heavy duty circuit breakers
- Isolating switches to all batteries
- Isolation transformer (USA spec only)
- 12 Volt
  - Batteries – 2x heavy duty batteries for domestic services
  - 1x heavy duty battery for exclusive port engine starting
  - 1x heavy duty battery for exclusive starboard engine starting
  - Emergency battery coupling system permits starboard engine to start port engine if domestic batteries accidentally discharged
- 240 Volt
  - Polarity check & earth leakage protection system
  - Regulated battery charger
  - Shore power supply

## Cockpit

- Boat hook
- Canopy (white, no windows)
- Cup holders
- Engine room access hatch
- Fender stowage
- Fixed height GRP table
- Fusion® Apollo audio
- Life raft stowage
- Manual bilge pumps
- Mooring lines (4x 15m) & stowage
- Moulded non-slip deck surface
- Step for side deck access
- Transom gate
- Teak laid floor
- Under seat storage
- USB socket
- Warp lockers
- Wet bar with sink
- Wrap around seating

## Main Saloon

- Fixed height dining table
- Fusion® Apollo audio
- Hinged window
- LED ceiling lights
- Sideboard with storage for bottles & glasses
- Sofa
- Sliding patio door
- Timber floor
- TV
- Venetian blinds

## Lower Saloon

- Access to day head
- Eye-level storage lockers
- First aid kit
- Fixed height dining table
- LED ceiling lights
- Lighting to stair risers
- Sofa with storage under
- Timber floor
- Venetian blind

## Galley

- Ceramic hob (2 burner)
- Crockery & cutlery (6 person)
- Electrical control panel
- Extractor fan
- Eye-level storage lockers
- Fire extinguisher
- Fridge/freezer
- Integrated waste bin
- LED ceiling lights
- Microwave combi oven
- Sink with hot & cold mixer tap
- Smoke alarm
- Solid Surface® worktop
- Timber floor
- Underfloor larder
- Venetian blind

# TARGA 45 GT

<b>VIP/Forward Cabin</b>	<b>Mid Cabin</b>	<b>3rd Cabin (optional, in lieu of lower saloon)</b>	<b>Engines &amp; Sterngear</b>
- Bedding	- Bedding	- Bedding	- Automatic bilge pumps for engine bay with a manual 'on' override
- Bedside tables	- Bedside tables	- Bunk beds (x2)	- Automatic engine room fire extinguisher system
- Carpet	- Carpet	- Carpet	- Electric engine room fans
- Double bed	- Double bed	- Hanging locker	- Electric trim tabs with cathodic protection
- Escape hatch to foredeck with blind	- Feature windows with opening portholes	- Mirror	- Engine room lights
- Eye-level storage lockers	- Fusion® Apollo audio (when cabin is selected as master)	- Reading lights	- Engine room soundproofing
- Feature windows with single opening porthole	- Leather paneling to aft bulkhead	- Venetian blind	- Seacocks on all inlets/outlets below waterline
- Full length mirror	- LED ceiling lights	- Warbrobe	
- Fusion® Apollo audio (when cabin is selected as master)	- Reading lights		
- LED ceiling lights	- Sofa	<b>Interior Décor</b>	<b>Fuel System</b>
- Reading lights	- Storage drawers under bed	- Choice of interior finishes selected by the Fairline Yachts Design Studio	- Emergency fuel shut-off valves
- Storage drawers under bed	- TV (when cabin is selected as master)	- Satin oak timber	- High capacity water separators & fuel filters
- TV (when cabin is selected as master)	- Upholstered bedhead & surround		- Individual fillers & vents to port & starboard
- Upholstered bedhead & surround	- Venetian blinds		- Twin fuel tanks with balance pipe
- Venetian blinds	- Wardrobes with mirrored doors	<b>Hullform &amp; Construction</b>	<b>Freshwater System</b>
- Wardrobes		- Antifouling protection to hull	- Automatic, pressurised supply
	<b>Mid Cabin En Suite</b>	- Deep 'V' hull	- Calorifier hot water system
<b>VIP/Forward Cabin En Suite</b>	- Electric silent-flush freshwater toilet	- Design, layout & detailing by AM Yacht Design and the Fairline Yachts Design Studio	- Water tank
- Electric silent-flush freshwater toilet	- Extractor fan	- Electric, sliding sunroof (glazed)	
- Extractor fan	- Eye-level storage lockers	- Full length moulded spray deflectors	<b>Black Waste</b>
- Feature window with opening porthole	- Feature window with single opening porthole	- Hull colour – White	- Holding tank
- Full set of bathroom fittings	- Full set of bathroom fittings	- Integrally moulded engine bearers	
- Full standing height shower	- Full standing height shower	- Polyurethane foam cores throughout deck for strength & thermal insulation	<b>Commissioning</b>
- Mirror	- LED ceiling lights	- Resin infused hull, internal liner, deck & superstructure	Full pre-delivery inspection & vessel commissioning at the Fairline Commissioning Centre, Ipswich, UK
- Shower tray automatic pump-out system	- Mirror	- Transverse & longitudinal strengthening stringers throughout hull	
- Solid Surface® vanity unit with locker & basin	- Shower tray automatic pump-out system		
- Stowage locker	- Solid surface® vanity unit with locker and basin		
- Timber floor	- Timber floor		
- Towel rail	- Towel rail		
- Towel set	- Towel set		
- Venetian blind	- Venetian blind		