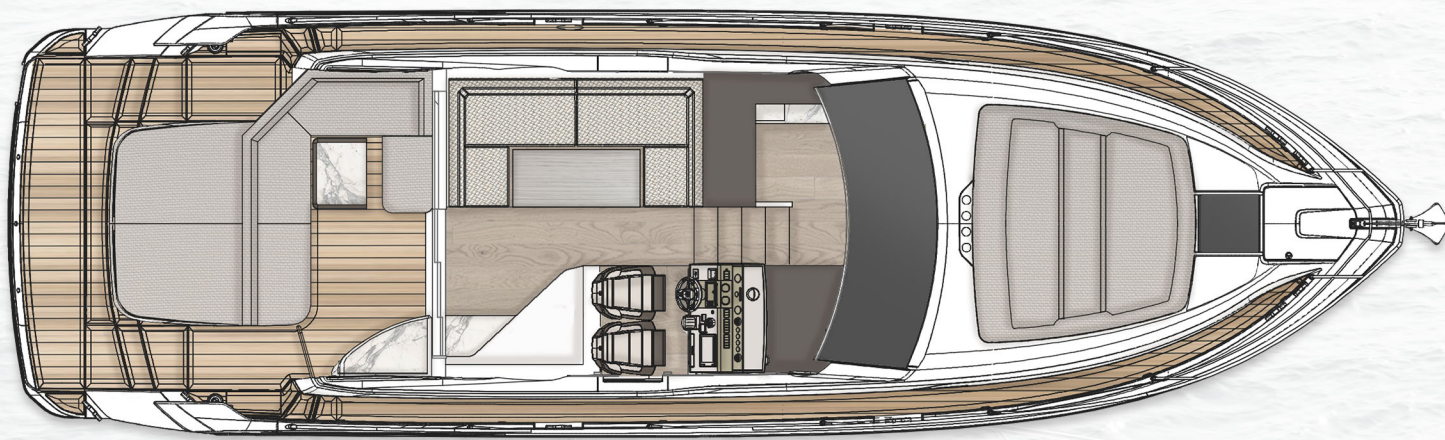


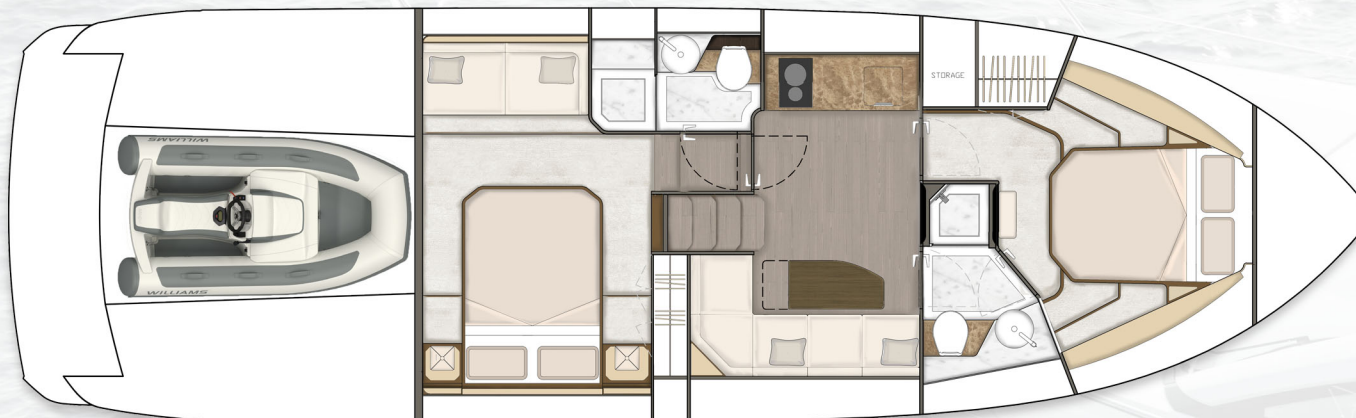


# TARGA 45 GT

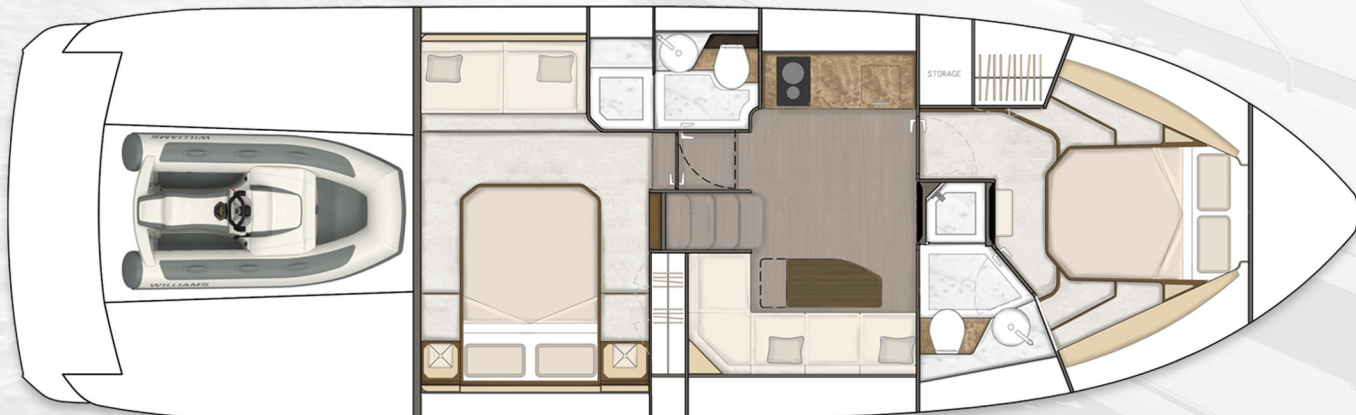
2021 Model Year  
Standard Specification



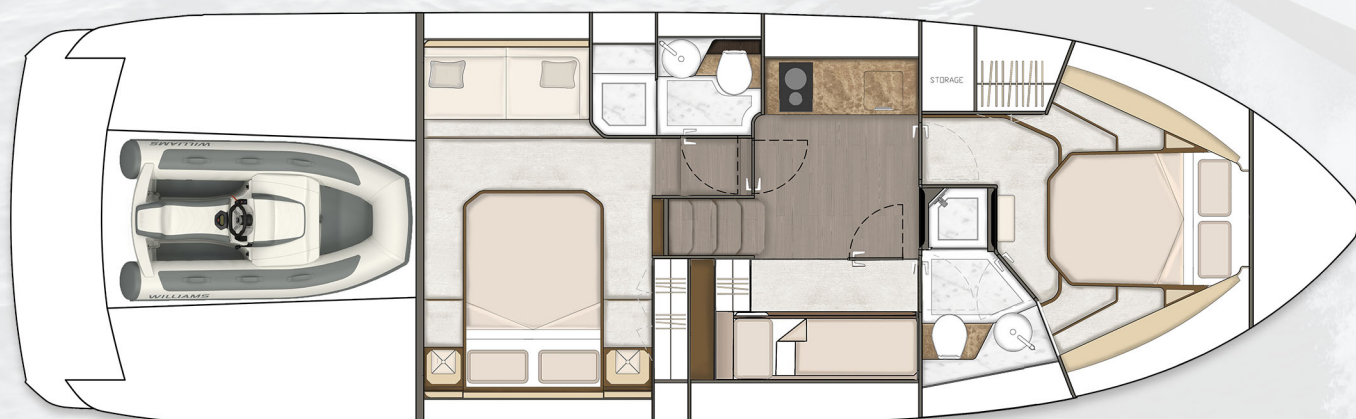
Main Deck



2 Cabin - Mid Master



2 Cabin - Forward Master (cost option)



3 Cabin (cost option)



## Principal Dimensions

|                                       |   |
|---------------------------------------|---|
| Length overall (incl. pulpit):        | 46'6" (14.2m)                               |
| Length of hull:                       | 42' (12.8m)                                 |
| Beam (incl. gunwale):                 | 14'2" (4.32m)                               |
| Draught:                              | 3'10" (1.17m) unloaded                      |
| Berths:                               | 4 - 5                                       |
| Height above waterline:               | 18'2" (5.55m)                               |
| Transport height:                     | 16' (4.87m)                                 |
| Fuel capacity:                        | 286 gallons / 343 US gallons (1,300 litres) |
| Water capacity:<br>(incl. calorifier) | 88 gallons / 105 US gallons (400 litres)    |

## Engines and Performance

|                               |                               |
|-------------------------------|-------------------------------|
| 2 x Volvo Penta IPS600 DS-440 | 2 x Volvo Penta IPS650 D6-480 |
| Max. Power: 880 hp            | Max. Power: 960 hp            |
| Drive: IPS                    | Drive: IPS                    |
| Fuel: Diesel                  | Fuel: Diesel                  |
| Max. Speed: 32 knots          | Max. Speed: 34 knots          |

|                |               |
|----------------|---------------|
| Type approval: | CE Category B |
| Capacity:      | 12 people     |







# TARGA 45 GT

## Deck:

- Anchor chain locker
- Anchor winch controls
- Anchor winch (electric)
- Calibrated anchor chain
- Chain stopper (10mm)
- Dinghy garage (to fit Williams 280 MiniJet)
- Carbon fibre ensign staff
- Fender set
- Full set of IMCO navigation lights
- High capacity emergency manual bilge pump system with changeover valves
- Hot & cold water transom shower
- Moulded non-slip deck surface
- Recessed self-draining area on foredeck for optional sunbed cushions
- Riding light
- Rubbing strake
- Self-stowing Delta® anchor (20kg)
- Stainless steel bow fairleads
- Stainless steel bow, spring & stern cleats
- Stainless steel handrails
- Stainless steel pulpit
- Stainless steel stemhead roller
- Stainless steel transom wing cleats
- Teak-laid bathing platform
- Toughened glass curved single piece windscreen
- Transom gate from cockpit to integral bathing platform
- Twin horns
- Water filler
- Windscreen washers
- Windscreen wipers

## Helm Position:

- USB socket
- Bilge pump switches with integral operating warning lights & audible alarms
- Twin helm seats
- Controls for engine bay fire extinguisher system
- Drinks holders
- Electronic single-lever throttle & gear controls for port & starboard engines
- Folding foot plinth
- Fuel gauges
- Full engine instrumentation including; tachometers, oil pressure gauges, temperature gauges, audible alarms & engine hour meters
- Garmin GMi 20 digital multi-function instrument system with colour display
- Garmin VHF marine radio
- Volvo 7" diagnostic display
- Helm position indicator

- High-speed magnetic compass
- IPS joystick
- Opening window (manual operation)
- Remote anchor winch controls
- Searchlight control
- Waterproof switches for navigation & riding lights, windscreen wipers & engine bay extractor fan

## Electrical Systems:

- Onan® 7 kW generator (9 kW USA)
- All 240V, 24V & 12V circuits (where applicable) protected by circuit breakers with main electrical load control panel
- Electrical sockets
- Heavy duty circuit breakers
- Isolating switches to all batteries
- 12 Volt**
- Batteries – 2 x heavy duty batteries for domestic services
- 1 x heavy duty battery for exclusive port engine starting
- 1 x heavy duty battery for exclusive starboard engine starting
- Emergency battery coupling system permits starboard engine to start port engine if domestic batteries accidentally discharged
- 240 Volt**
- Polarity check & earth leakage protection system
- Regulated battery charger
- Shore power supply

## Cockpit:

- Bar unit with sink
- Boat hook
- Central dining area with GRP table
- Drinks holders
- Engine room access hatch
- Fender stowage
- Fenders x 6
- Fusion audio
- Life raft stowage
- Manual bilge pumps
- Mooring warps
- Moulded non-slip deck surface
- Step for side deck access
- Stowage lockers
- USB socket
- Warp lockers
- Wrap around seating with sunbed conversion
- Waterproof speakers x 2

## Interior Décor:

- Oak Satin
- Choice of interior finishes selected by the Fairline Yachts Design Studio

## Hullform & Construction:

- Antifouling protection to hull
- Deep 'V' hull
- Design, layout & detailing by AM Yacht Design and the Fairline Yachts Design Studio
- Full length moulded spray deflectors
- Hard top with electric sliding roof
- Hull colour – White
- Integrally moulded engine bearers
- Polyurethane foam cores throughout deck for strength & thermal insulation
- Resin infused hull & internal liner
- Transverse & longitudinal strengthening stringers throughout hull

## Main Saloon:

- Companion seating opposite helm
- Companionway steps with handrail to lower saloon
- Dining table
- LED ceiling lights
- 43" LCD television
- Manual opening windows
- Fusion audio
- Sideboard with storage for bottles & glasses
- Sofa

## Lower Saloon:

- Access to day head
- Companionway timber steps with handrail
- First aid kit
- Fixed height dining table
- Hull window
- 'L' shape sofa
- LED ceiling lights
- Lockers (eye level)
- Stowage locker under dinette seating

## Galley:

- Control panel for 12V/240V domestic electrical circuits
- Crockery stowage
- Extractor fan
- Fire extinguisher
- Ceramic hob (2 burner)
- Integrated waste bin
- LED ceiling lights
- Lockers (eye level)
- Microwave combi oven
- Sink with hot & cold mixer tap
- Fridge/freezer with automatic 12V/240V change-over
- Underfloor larder

## Forward Cabin:

- Access to en suite
- Drawers under bed
- Full length double bed
- Full length mirror
- Hatch to foredeck
- High level lockers
- LED ceiling lights
- Opening portholes
- Overhead glazing
- Reading lights
- Wardrobe

## Forward Cabin En Suite:

- Automatic shower tray pump-out system
- Electric silent-flush freshwater toilet
- Extractor fan
- Solid surface vanity unit locker & basin with hot & cold pressurised water
- Full set of bathroom fittings
- Full standing-height shower with integral shower tray & adaptable shower head
- Hand basin with hot & cold water
- Mirror
- Opening porthole
- Stowage locker





# TARGA 45 GT

## Mid Cabin:

- Access to en suite
- Full length double bed with optional conversion to twin single beds
- Full length mirror
- Leather inlays to feature bulkhead
- LED ceiling lights
- Opening portholes
- Reading lights
- Sofa
- Wardrobe

## Mid Cabin En Suite:

- Automatic shower tray pump-out system
- Electric silent-flush freshwater toilet
- Extractor fan
- Foundations® vanity unit locker & basin with hot & cold pressurised water
- Full set of bathroom fittings
- Full standing-height shower with integral shower tray & adaptable shower head
- Hand basin with hot & cold water
- Mirror
- Opening porthole

## 3rd Cabin (optional):

- Hanging Locker
- 2 x bunk beds
- Mirror
- Reading lights

## Engines & Sterngear:

- Automatic bilge pumps for engine bay with a manual 'on' override
- Automatic engine room fire extinguisher system
- Electric engine room fans
- Electric trim tabs with cathodic protection
- Engine room lights
- Engine room soundproofing
- Seacocks on all inlets/outlets below waterline

## Fuel System:

- Emergency fuel shut-off valves
- High capacity water separators & fuel filters
- Individual fillers & vents to port & starboard
- Twin fuel tanks with balance pipe

## Freshwater System:

- Automatic, pressurised supply
- Calorifier hot water system
- Water tank

## Black Waste:

- Holding tank

## Commissioning:

Full pre-delivery inspection & vessel commissioning at the Fairline Commissioning Centre, Ipswich, UK

## USA Specifications:

- Voltage - 2 x 110V (220V) 60Hz

Whilst every effort is made to keep all sales literature up to date, it should not be regarded as an infallible statement of current specifications & does not constitute an offer for the sale of any particular boat.

We continually seek to improve the specification & design of our boats, so alterations & upgrades to specifications take place continually.

Appointed dealers are not agents of Fairline Yachts Ltd & are not authorised to commit Fairline Yachts Ltd by any express or implied undertaking or representation.

Performance Figures: Power quoted in our literature for outboard engines is crankshaft output.

Performance Estimates: Performance estimates are given in good faith but are in no way guaranteed for any particular model. Dirt on the bottom of the boat, damage to the propellers, engine tuning, external water & air temperatures & the weight of crew, fuel & water carried can all adversely affect performance.

For those & other reasons we can give no performance guarantees