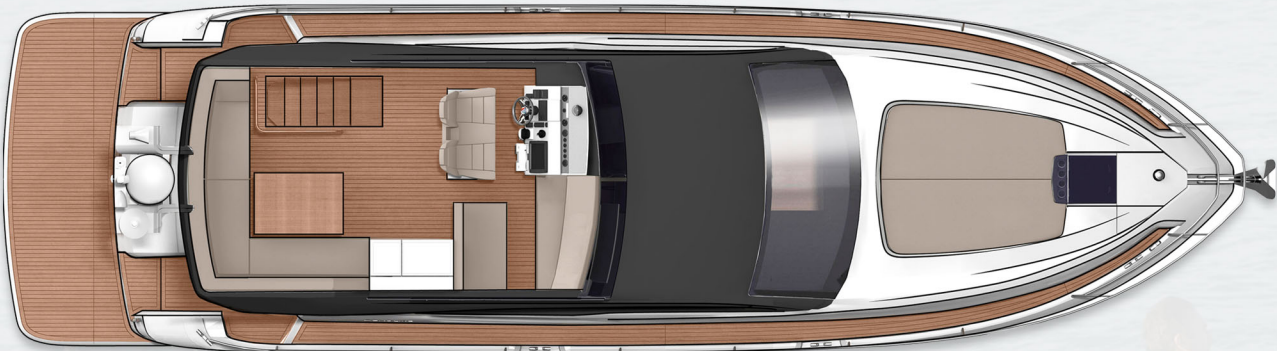
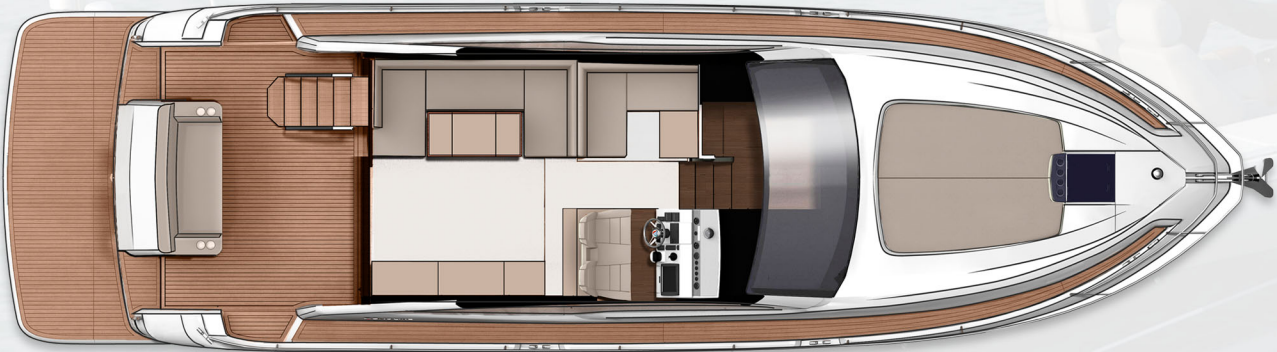


SQUADRON 50

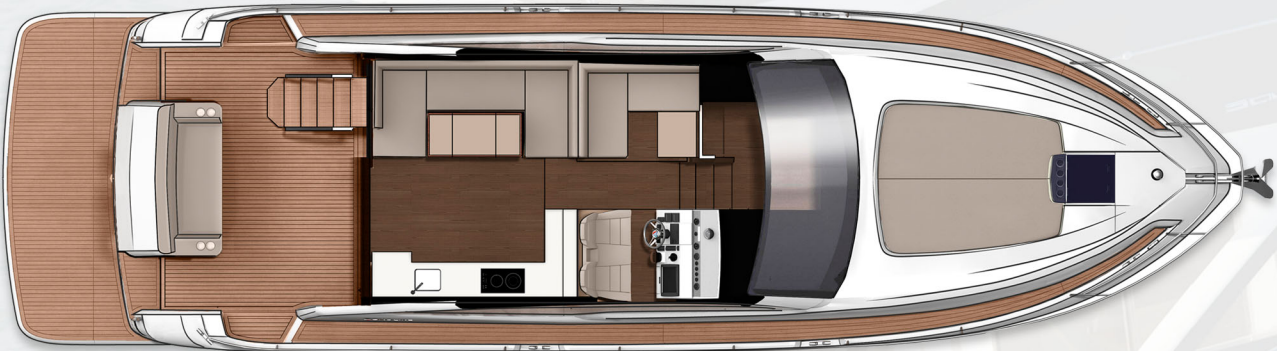
2021 Model Year
Standard Specification



Flybridge



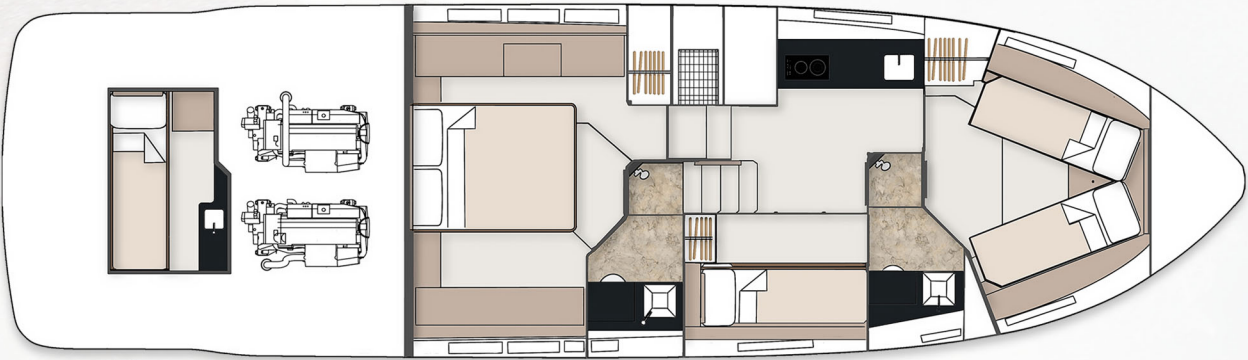
Main Deck



Main Deck - Galley Up



2 Cabin



3 Cabin



Principle Dimensions

Length overall (incl. pulpit):	51'4" (15.64m)
Length overall (excl. pulpit):	50'8" (15.44m)
Beam (incl. gunwale):	14'2" (4.32m)
Draught:	3'10" (1.17m) unloaded
Berths:	4 - 7
Height above waterline:	18'2" (5.55m)
Transport height:	16' (4.87m)
Dry weight (approx.):	13.28 imp. tons / 14.88 US tons (13,500kg)
Fuel capacity:	288 gallons / 346 US gallons (1,309 litres)
Water capacity: (incl. calorifier)	106 gallons / 127 US gallons (482 litres)

Engines and Performance

2 x Volvo Penta IPS600 D6-440	2 x Volvo Penta IPS650 D6-480
Max. power: 880 hp	Max. power: 960 hp
Drive: IPS	Drive: IPS
Fuel: Diesel	Fuel: Diesel
Max. speed: 30 knots	Max. speed: 31 knots
2 x Volvo Penta IPS700 D8-550	
Max. power: 1100 hp	
Drive: IPS	
Fuel: Diesel	
Max. speed: 32 knots	
Type approval:	CE Category B
Capacity:	16 people



Deck:

- Anchor chain locker
- Anchor winch controls
- Anchor winch (electric)
- Calibrated anchor chain
- Carbon fibre ensign staff
- Fender set
- Full set of IMCO navigation lights
- Hot & cold water transom shower
- Moulded non-slip deck surface
- Recessed self-draining area on foredeck for sunbed cushions
- Riding light
- Rubbing strake
- Self-stowing Delta® anchor
- Stainless steel bow fairleads
- Stainless steel bow, spring & stern cleats
- Stainless steel handrails
- Stainless steel pulpit
- Stainless steel stemhead roller
- Stainless steel transom wing cleats
- Swim ladder to bathing platform
- Teak-laid bathing platform
- Toughened glass curved windscreen
- Transom gates from cockpit to bathing platform
- Twin horns
- Water filler
- Windscreen washers
- Windscreen wipers

Flybridge & Second Helm Position:

- 12V heavy duty weather proof socket
- Access hatch
- Adjustable/tilt steering wheel
- Bilge pump warning lights & audible alarms
- Twin helm seats
- Bow thruster controls
- Companion seating to helm
- Cup holders
- Echosounder & speedometer/distance log repeater(s) with sea water temperature read out
- Electronic single-lever throttle & gear controls for port & starboard engines
- Fire extinguisher
- Flybridge bar unit with refrigerator, sink & waste bin
- Forward seating with infill cushion
- Garmin GMI 20 digital multi-function instrument system with colour display
- Radar mast
- GRP table with teak border
- Rudder position indicator

- High speed magnetic compass
- IPS joystick
- Moulded non-slip deck surface
- Powered steering
- Remote anchor winch controls
- Remote control searchlight
- Repeat engine bay fire extinguisher controls
- Repeat flybridge engine instrumentation, controls & electronics
- Sunbed with storage under
- Teak laid flybridge steps
- Trim tab controls
- Upholstered seating area with table, convertible to cushioned sunbed
- VHF radio incorporating intercom
- Wind-deflecting screen with grab rail

Main Helm Position:

- 12V socket
- Bilge pump switches with integral operating warning lights & audible alarms
- Twin helm seats
- Controls for engine bay fire extinguisher system
- Drinks holders
- Electronic single-lever throttle & gear controls for port & starboard engines
- Fuel gauges
- Full engine instrumentation including; tachometers, oil pressure gauges, temperature gauges, audible alarms & engine hour meters
- Garmin GMI 20 digital multi-function instrument system with colour display
- Garmin VHF marine radio
- Rudder position indicator
- High-speed magnetic compass
- IPS joystick
- Remote anchor winch controls
- Searchlight remote control
- Single piece windscreen
- Switchgear for navigation & riding lights, windscreen wipers & engine bay extractor fan

Electrical Systems:

- Onan® 7 kW generator (9 kW USA)
- All 240V, 24V & 12V circuits (where applicable) protected by circuit breakers with main electrical load control panel
- Electrical sockets
- Heavy duty circuit breakers
- Isolating switches to all batteries

12 Volt

- Batteries – 2 x heavy duty batteries for domestic services
- 1 x heavy duty battery for exclusive port engine starting
- 1 x heavy duty battery for exclusive starboard engine starting
- Emergency battery coupling system enables starboard engine to start port engine if domestic batteries accidentally discharged

240 Volt

- Polarity check & earth leakage protection system
- Power points throughout the boat fed from shore power or generator
- Regulated battery charger
- Shore power supply

Cockpit:

- 12V heavy duty weatherproof socket
- Bathing platform lights
- Boat hook
- Cockpit seating
- Drinks holders
- Engine bay access hatch
- Fender stowage
- Lazarette under cockpit seating
- Life raft stowage
- Manual bilge pumps
- Step for side deck access
- Teak laid cockpit floor
- Warp locker

Interior Décor:

Choice of interior finishes selected by the Fairline Yachts Design Studio

Hullform & Construction:

- Antifouling protection to hull
- Deep 'V' hull
- Design, layout & detailing by the Fairline Yachts Design Studio
- Full length moulded spray deflectors
- Hull colour – White
- Integrally moulded engine bearers
- Polyurethane foam cores throughout deck for strength & thermal insulation
- Resin infused hull & internal liner
- Transverse & longitudinal strengthening stringers throughout hull

Main Saloon:

- Audio head unit with Bluetooth connectivity
- Companion seating opposite helm

- Companionway steps with handrail to lower deck
- Dining table
- LED ceiling lights
- 32" LCD television
- Manual opening windows
- Sideboard with storage for bottles & glasses
- Sofa
- Stainless steel sliding door to cockpit with integral blind system
- Storage locker to helm seat base

Lower Saloon:

- Access to day head
- Aerial & connections for television
- Companionway timber steps with handrail
- First aid kit
- Dinette table
- LED ceiling lights
- 22" LCD television
- Lockers (eye level)
- Sofa
- Stowage locker under dinette seating
- Underfloor stowage locker

Galley:

- Control panel for 12V/240V domestic electrical circuits
- Crockery stowage
- Extractor fan
- Fire extinguisher
- Hob, oven & grill
- Integrated waste bin
- Lacquered cupboard doors
- LED ceiling lights
- Lockers (eye level)
- Sink with hot & cold mixer tap
- Fridge/freezer with automatic 12V/240V change-over

Forward Cabin:

- Access to en suite
- Bedside tables
- Full length double bed
- Full length mirror
- Hatch to foredeck
- Headboard shelf unit
- High level lockers
- Low level drawers
- LED ceiling lights
- Opening portholes
- Reading lights
- Trinket locker
- Wardrobe

Third Cabin (optional, in lieu of lower saloon):

- Full length mirror
- Full length twin bunk beds
- LED ceiling lights
- Opening porthole
- Reading lights
- Wardrobe

Guest En Suite:

- Automatic shower tray pump-out system
- Electric silent-flush freshwater toilet
- Extractor fan
- Solid surface vanity unit locker & basin with hot & cold pressurised water
- Full set of bathroom fittings
- Full standing-height shower with integral shower tray & adaptable shower head
- Hand basin with hot & cold water
- Mirror
- Opening porthole
- Stowage locker

Master Cabin:

- Access to en suite
- Bedside tables
- Drawers
- Full length double bed
- Full length mirror
- LED ceiling lights
- Opening portholes
- Reading lights
- Wardrobe
- Vanity unit

Master Cabin En Suite:

- Automatic shower tray pump-out system
- Electric silent-flush freshwater toilet
- Extractor fan
- Solid surface vanity unit locker & basin with hot & cold pressurised water
- Full set of bathroom fittings
- Full standing-height shower with integral shower tray & adaptable shower head
- Hand basin with hot & cold water
- Mirror
- Opening porthole
- Stowage locker

Crew Cabin (optional):

- Single berth
- Sink
- Storage locker
- Toilet

Engines & Stern gear:

- Automatic bilge pumps for engine bay with a manual 'on' override
- Automatic engine room fire extinguisher system
- Electric engine room fans
- Electric trim tabs with cathodic protection
- Engine room lights
- Engine room soundproofing
- High capacity emergency manual bilge pump system with changeover valves
- Seacocks on all inlets/outlets below waterline

Fuel System:

- Changeover valve system to permit each engine to draw fuel from & return fuel to either tank
- Emergency fuel shut-off valves
- High capacity water separators & fuel filters
- Individual fillers & vents to port & starboard
- Twin fuel tanks

Freshwater System:

- Automatic, pressurised supply
- Calorifier hot water system
- Water tank

Commissioning:

- Full pre-delivery inspection & vessel commissioning at the Fairline Commissioning Centre, Ipswich, UK

USA Specifications:

- Voltage - 2 x 110V (220V) 60Hz

Whilst every effort is made to keep all sales literature up to date, it should not be regarded as an infallible statement of current specifications & does not constitute an offer for the sale of any particular boat.

We continually seek to improve the specification & design of our boats, so alterations & upgrades to specifications take place continually.

Appointed dealers are not agents of Fairline Yachts Ltd & are not authorised to commit Fairline Yachts Ltd by any express or implied undertaking or representation.

Performance Figures: Power quoted in our literature for engines is crankshaft output.

Performance Estimates: Performance estimates are given in good faith but are in no way guaranteed for any particular model. Dirt on the bottom of the boat, damage to the propellers, engine tuning, external water & air temperatures & the weight of crew, fuel & water carried can all adversely affect performance.

For those & other reasons we can give no performance guarantees