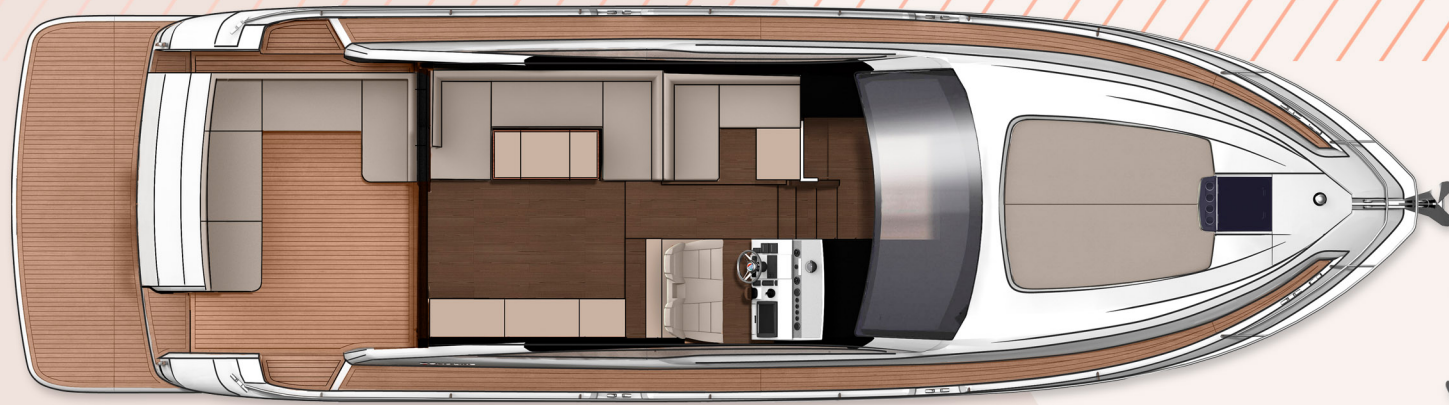
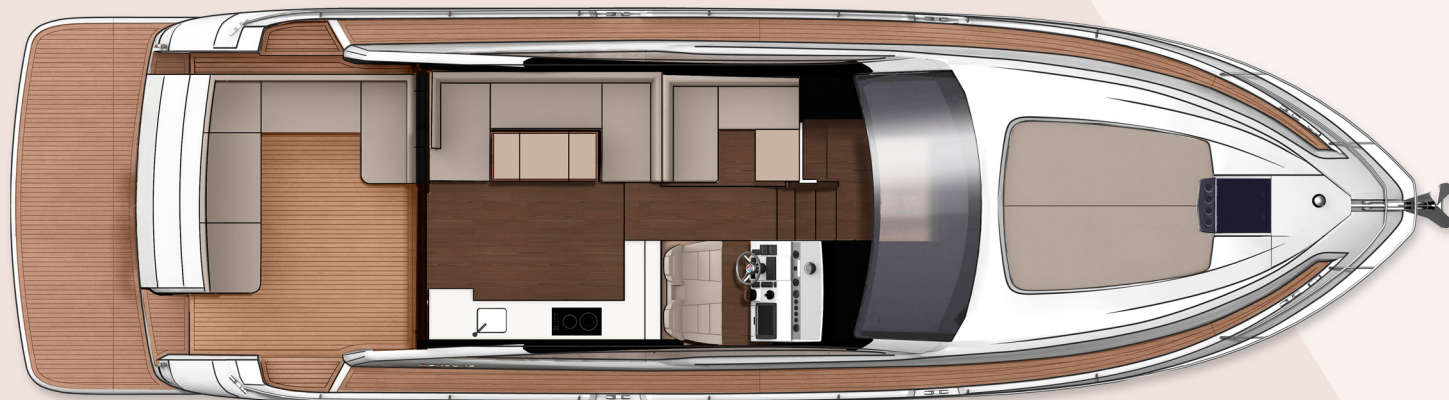


TARGA 50 GT

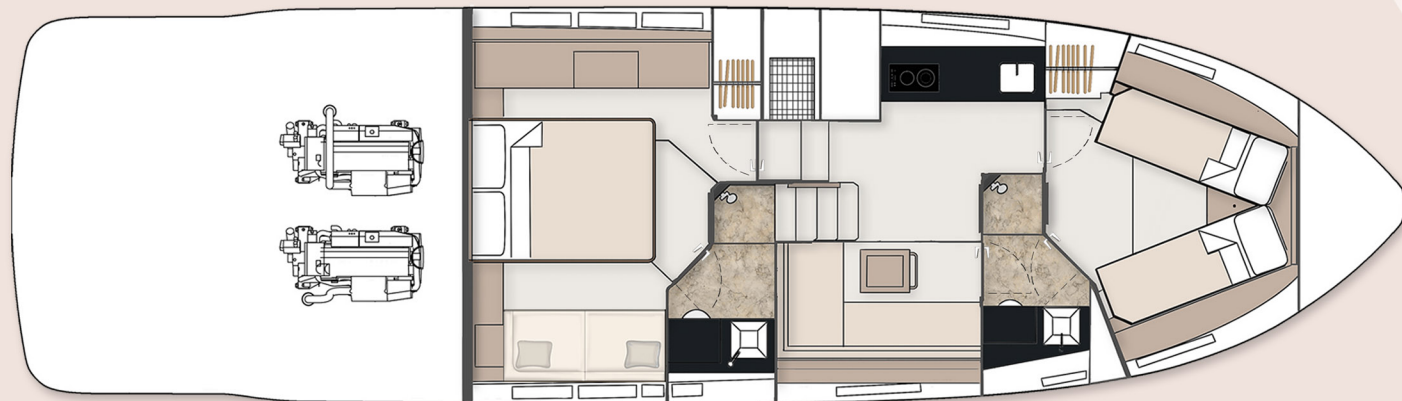
Model Year: 2022



- Main Deck



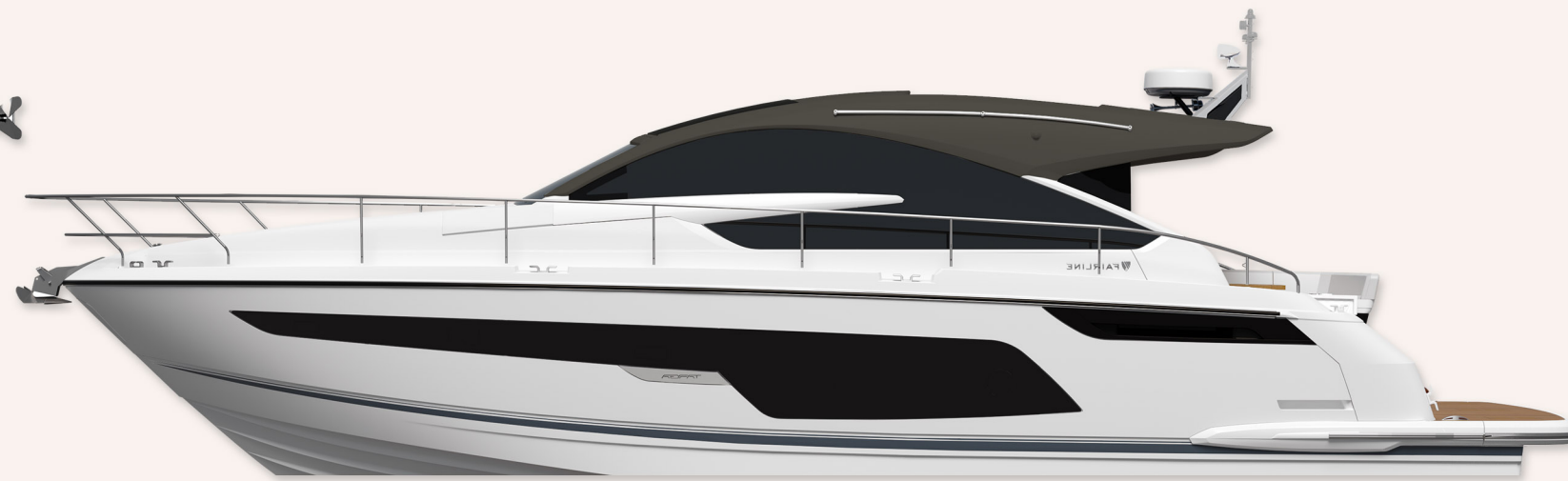
- Main Deck - Galley Up (optional)



- 2 Cabin



- 3 Cabin



Principal Dimensions

Length overall (incl. pulpit):	51'4" (15.64m)
Length overall (excl. pulpit):	50'8" (15.44m)
Beam (incl. gunwale):	14'2" (4.32m)
Draft:	3'10" (1.17m) unloaded
Airdraft:	15'1" (4.6m)
Transport height:	15'10" (4.83m)
Berths:	4 - 7
Dry weight (approx.):	13.28 imp. tons / 14.88 US tons (13,500kg)
Fuel capacity:	288 gallons / 346 US gallons (1,309 litres)
Water capacity (incl. calorifier):	106 gallons / 127 US gallons (482 litres)
Type approval:	CE Category B
Capacity:	16 people

Engines & Performance

2 x Volvo Penta IPS650 D6-480	2 x Volvo Penta IPS700 D8-550
Max. power: 960 hp	Max. power: 1100 hp
Drive: IPS	Drive: IPS
Fuel: Diesel	Fuel: Diesel
Max. Speed: 31 knots	Max. Speed: 32 knots

TARGA 50 GT

Model Year: 2022

Deck

- Anchor chain locker
- Anchor winch & controls
- Calibrated galvanised anchor chain
- Carbon fibre ensign staff
- Fenders (x5)
- Full set of IMCO navigation lights
- Hot & cold water transom shower
- Moulded non-slip deck surface
- Riding light
- Rubbing strake
- Self-stowing Delta® anchor
- Stainless steel bow fairleads
- Stainless steel bow, spring & stern cleats
- Stainless steel pulpit rail
- Stainless steel stemhead roller
- Stainless steel transom wing cleats
- Swim ladder to bathing platform
- Teak laid bathing platform (fixed height)
- Toughened glass curved single piece windscreen
- Transom shower
- Twin horns
- Water filler
- Windscreen washers / wipers

Helm Position

- Analogue gauges
- Bilge pump switches with integral operating warning lights & audible alarms
- Controls for engine bay fire extinguisher system
- Cup holders
- Electronic single-lever throttle & gear controls

- Full digital engine instrumentation including; tachometers, oil pressure gauges, temperature gauges, audible alarms & engine hour meters
- Garmin GMI 20 instrument display
- Garmin VHF marine radio
- High-speed magnetic compass
- IPS joystick
- Opening window (manual operation)
- Remote anchor winch controls
- Rudder position indicator
- Searchlight control
- Twin helm seats with storage to base

Electrical Systems

- 7 kW generator (9 kW USA)
- All 240V, 24V & 12V circuits (USA: 2x 110V [220V] 60Hz) protected by circuit breakers with main electrical load control panel
- Electrical sockets
- Heavy duty circuit breakers
- Isolating switches to all batteries
- 12 Volt
 - Batteries – 2x heavy duty batteries for domestic services
 - 1x heavy duty battery for exclusive port engine starting
 - 1x heavy duty battery for exclusive starboard engine starting
- Emergency battery coupling system permits starboard engine to start port engine if domestic batteries accidentally discharged
- 240 Volt
 - Polarity check & earth leakage protection system
 - Regulated battery charger
 - Shore power supply

Cockpit

- Boat hook
- Canopy (white, no windows)
- Cup holders
- Engine room access hatch
- Fender stowage
- Fixed height GRP table
- Fusion® Apollo audio
- Life raft stowage
- Manual bilge pumps
- Mooring lines & stowage
- Moulded non-slip deck surface
- Seating
- Step for side deck access
- Transom gate
- Teak laid floor
- Under seat storage
- Warp lockers

Main Saloon

- Companion seat
- Fixed height dining table
- Fusion® Apollo audio
- LED ceiling lights
- TV
- Sideboard with storage for bottles & glasses
- Sofa
- Sliding patio door
- Timber floor
- Venetian blinds

Lower Saloon

- Access to day head
- Eye-level storage lockers
- First aid kit
- Fixed height dining table
- LED ceiling lights
- Lighting to stair risers
- Sofa with storage under
- Timber floor
- Venetian blind

Galley

- Ceramic hob (2 burner)
- Crockery & cutlery (6 person)
- Electrical control panel
- Extractor fan
- Eye-level storage lockers
- Fire extinguisher
- Fridge/freezer
- Integrated waste bin
- LED ceiling lights
- Microwave combi oven
- Sink with hot & cold mixer tap
- Smoke alarm
- Solid Surface® worktop
- Timber floor
- Underfloor larder
- Venetian blind

TARGA 50 GT

Model Year: 2022

VIP/Forward Cabin	Master Cabin	3rd Cabin (optional, in lieu of lower saloon)	Engines & Sterngear
- Bedding	- Bedding	- Bedding	- Automatic bilge pumps for engine bay with a manual 'on' override
- Bedside tables	- Bedside tables	- Bunk beds (x2)	- Automatic engine room fire extinguisher system
- Carpet	- Carpet	- Carpet	- Electric engine room fans
- Escape hatch to foredeck with blind	- Double bed	- Hanging Locker	- Electric trim tabs with cathodic protection
- Eye-level storage lockers	- Feature windows with opening portholes	- Mirror	- Engine room lights
- Feature windows with single opening porthole	- Fusion® Apollo audio	- Reading lights	- Engine room soundproofing
- Full length mirror	- LED ceiling lights	- Venetian blind	- Seacocks on all inlets/outlets below waterline
- LED ceiling lights	- Reading lights	- Wardrobe	
- Reading lights	- Sofa		
- Sliding scissor berth	- TV	Interior Décor	Fuel System
- Storage drawers under bed	- Upholstered bedhead & surround	- Choice of interior finishes selected by the Fairline Yachts Design Studio	- Changeover valve system
- Upholstered bedhead & surround	- Venetian blinds	- Satin oak timber	- Emergency fuel shut-off valves
- Venetian blinds	- Wardrobe with mirrored door		- High capacity water separators & fuel filters
- Wardrobes			- Individual fillers & vents to port & starboard
			- Twin fuel tanks with balance pipe
VIP/Forward Cabin En Suite	Master Cabin En Suite	Hullform & Construction	Freshwater System
- Electric silent-flush freshwater toilet	- Electric silent-flush freshwater toilet	- Antifouling protection to hull	- Automatic, pressurised supply
- Extractor fan	- Extractor fan	- Deep 'V' hull	- Calorifier hot water system
- Feature window with opening porthole	- Eye-level storage lockers	- Design, layout & detailing by AM Yacht Design and the Fairline Yachts Design Studio	- Water tank
- Full set of bathroom fittings	- Feature window with single opening porthole	- Electric, sliding sunroof (glazed)	
- Full standing height shower	- Full set of bathroom fittings	- Full length moulded spray deflectors	
- Mirror	- Full standing height shower	- Hull colour – White	Black Waste
- Shower tray automatic pump-out system	- LED ceiling lights	- Integrally moulded engine bearers	- Holding tank
- Solid Surface® vanity unit with locker & basin	- Mirror	- Polyurethane foam cores throughout deck for strength & thermal insulation	Commissioning
- Stowage locker	- Shower tray automatic pump-out system	- Resin infused hull, internal liner, deck & superstructure	Full pre-delivery inspection & vessel commissioning at the Fairline Commissioning Centre, Ipswich, UK
- Timber floor	- Solid surface® vanity unit with locker & basin	- Transverse & longitudinal strengthening stringers throughout hull	
- Towel rail	- Timber floor		
- Towel set	- Towel rail		
- Venetian blind	- Towel set		
	- Venetian blind		