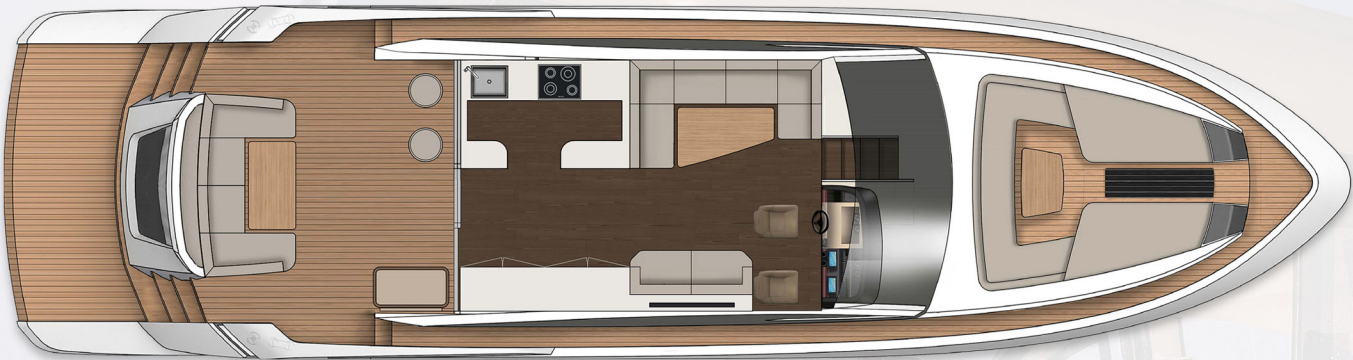


TARGA 65 GT

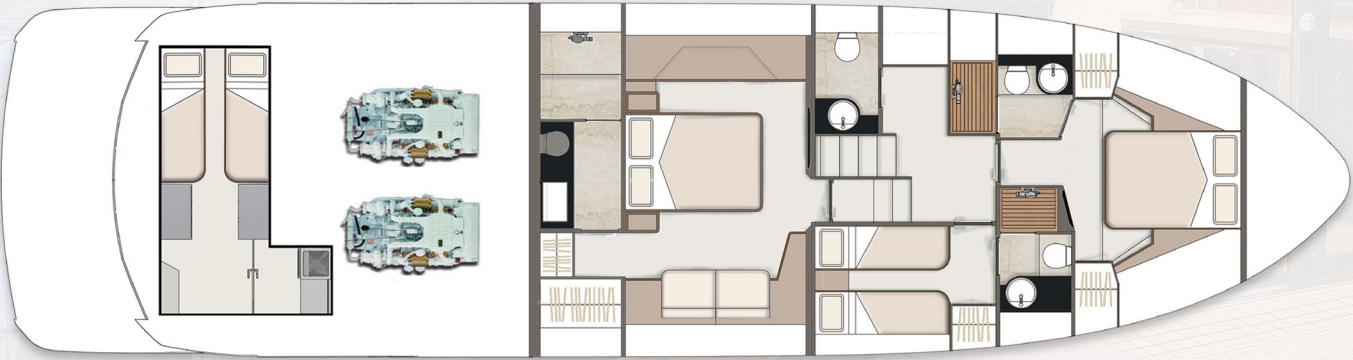
2021 Model Year
Standard Specification



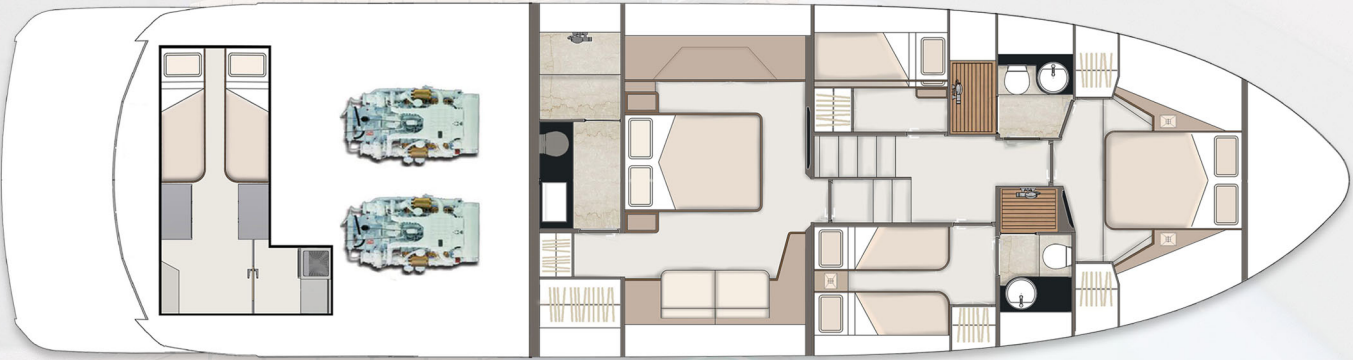
Main Deck



Main Deck



Lower Deck - 3 Cabin



Lower Deck - 4 Cabin



Principal Dimensions

Length overall (incl. pulpit):	65'4" (19.96m)
Length overall (excl. pulpit):	65'2" (19.88m)
Beam (incl. gunwale):	17'2" (5.23m)
Draught:	4'8" (1.47m) unloaded
Berths:	6 - 10
Height above waterline:	17' (5.20m)
Transport height:	16'4" (5.0m)
Dry weight (approx.):	33.56 imp. tons / 37.47 US tons (34,000kg)
Fuel capacity:	1,029 gallons / 1,236 US gallons (4,680 litres)
Water capacity: (incl. calorifier)	237 gallons / 285 US gallons (1,080 litres)

Engines and Performance

2 x Caterpillar C18	2 x MAN V8 1200
Max. power: 2300 hp	Max. power: 2400 hp
Drive: Shaft	Drive: Shaft
Fuel: Diesel	Fuel: Diesel
Max. Speed: 31 knots	Max. Speed: 31 knots

Type approval:	CE Category B
Capacity:	16 people



TARGA 65 GT

Deck:

- Anchor chain locker
- Anchor winch controls
- Anchor winch (electric)
- Calibrated anchor chain (12mm, 80m length)
- Carbon fibre ensign staff
- Fender set
- Foredeck drinks holders
- Foredeck glazing
- Foredeck seating & sunbeds
- Foredeck storage lockers
- Fuel fillers
- Full set of IMCO navigation lights
- Handrail
- Hot & cold water transom shower
- Manual bilge pump forward
- Moulded non-slip deck surface
- Remote control searchlight
- Self-stowing Delta® galvanised anchor (40kg)
- Stainless steel aft fairleads
- Stainless steel bow fairleads
- Stainless steel bow, cockpit, stern & twin spring cleats
- Stainless steel gunwale
- Stainless steel pulpit
- Teak laid hi/lo bathing platform
- Twin horns
- Water filler
- Windscreen washers
- Windscreen wipers

Helm Position:

- USB port
- Adjustable/tilt steering wheel
- Bilge pump switches with integral operating warning lights & audible alarms
- Black mesh windscreen covers
- Bow thruster controls
- Controls for engine bay fire extinguisher system
- Drinks holders
- Electronic single-lever throttle & gear controls for port & starboard engines
- Glass Bridge incorporating full engine instrumentation; tachometers, fuel gauges, temperature gauges, audible alarms, rudder position indicator f-Drive (Fairline multi-function glass bridge)
- Raymarine GS165 multi-function display
- Raymarine Type 1 autopilot
- Raymarine P70RS control head unit
- Raymarine RAY260E VHF marine radio
- High speed magnetic compass
- Opening window (electric)
- Power steering
- Powered glazed sunroof with internal blind

- Red night-light illumination to helm
- Remote anchor winch controls
- Searchlight controls
- Switchgear
- Trim tab controls
- Twin helm seats

Electrical Systems:

- 230 - 240V 50Hz
- All 240V, 24V & 12V circuits (where applicable) protected by circuit breakers with main electrical load control panel
- Heavy duty circuit breakers
- Isolating switches to all batteries
- Onan® 22.5kW generator
- 12 Volt**
- Voltage dropper from domestic batteries
- 24 Volt**
- 2 x heavy duty battery for exclusive port engine starting
- 2 x heavy duty battery for exclusive starboard engine starting
- Batteries - 4 x heavy duty batteries wired in parallel supplying domestic services & port engine starting
- Circuit breaker for anchor winch
- Emergency battery coupling system permits each engine to start from opposite battery bank
- Inverter
- Isolation summation transformer
- 240 Volt**
- Polarity check & earth leakage protection system
- Power points throughout the boat fed from shore power or generator
- Regulated 75amp charger for domestic batteries
- Shore power supply line

Cockpit:

- 12V heavy duty weatherproof socket
- Access to lazarette or crew cabin
- Access to side deck
- Bathing platform lights
- Boat hook
- Cockpit bar unit with sink & fridge
- Cockpit cover (white)
- Deck level lighting
- Drinks holders
- Engine bay access hatch with stainless steel gas struts
- Fender stowage
- Fusion audio system with wireless connectivity
- Life raft stowage
- Manual bilge pump
- Mooring warps
- Mooring warp stowage
- Seating 'U' shaped
- Single level floor from cockpit to saloon
- Speakers

- Teak laid floor throughout self-draining cockpit
- Teak table with drinks holders
- Transom gates

Interior Décor:

- Oak Satin
- Choice of interior finishes selected by the Fairline Yachts Design Studio

Hullform & Construction:

- Antifouling protection to hull
- Bow thruster
- Deep 'V' hull
- Design, layout & detailing by AM Yacht Design and the Fairline Yachts Design Studio
- Naval architecture by Vripack
- Extended sound-proofing between engine room & accommodation
- Feature windows with opening portholes
- Moulded spray deflectors
- Hull colour – white
- Hull/deck joint bolted & bonded
- Integrally moulded engine bearers
- Isophthalic gel coat backed by isophthalic resin-rich powder-bound glass mat
- Polyurethane foam cores throughout deck for strength & thermal insulation
- Resin infused cored hull & liner with hand-laid deck & components

Saloon:

- 50" LCD TV, Harman Kardon 2.1 with wireless connectivity
- Harman Kardon wall mounted speakers
- Electric opening roof with overhead glazing
- Overhead lighting
- Random oak flooring
- Sliding patio door to cockpit, galley 'power down' functionality
- Venetian blinds

Galley:

- Avonite work surface
- Chopping board to sink infill
- Crockery stowage
- Dinner service 24-piece, 6 place settings
- Fire extinguisher
- First aid kit
- Fridge/freezer
- Induction hob
- Integrated waste bin

- Microwave combi oven
- Overhead lighting
- Random oak floor
- Sink with hot & cold mixer tap
- Stowage cupboards & drawers

Lobby:

- Access to master cabin, guest cabins & day head
- Handrail
- Lighting to stair risers
- Storage unit

Day Head:

- Random oak floor
- Electric silent-flush freshwater toilet
- Extractor fan
- Mirror
- Overhead lighting
- Vanity unit locker & basin with hot & cold pressurised water
- Venetian blind

Master Cabin:

- 40" LCD TV
- Bedside tables
- Drawers to port side
- Harman Kardon wall mounted speakers
- Kingsize double bed with sprung mattress
- Feature windows with opening portholes
- Fusion audio system with Bluetooth connectivity
- Mirror
- Overhead feature lighting
- Reading lights
- Sofa
- Vanity unit
- Venetian blinds
- Wardrobe with mirrored doors

Master Cabin En Suite:

- Avonite vanity unit locker & basin with hot & cold pressurised water
- Avonite floor
- Electric silent-flush freshwater toilet
- Extractor fan
- Full set of bathroom fittings
- Full size shower with seat & glass, hinged door
- Large hull window with single opening port hole
- Mirror
- Mirrored lockers
- Overhead lighting
- Shower tray automatic pump-out system
- Venetian blind

TARGA 65 GT

Forward Cabin:

- Bedside tables
- Double bed with sprung mattress and storage drawers
- Escape hatch to foredeck
- Feature windows with single opening porthole
- Overhead glazing with blind
- Overhead lighting
- Reading lights
- Venetian blinds
- Wardrobe with leather inlay doors

Forward Cabin En Suite:

- Avonite floor
- Electric silent-flush freshwater toilet
- Extractor fan
- Full set of bathroom fittings
- Full standing height shower with glass hinged door
- Mirror
- Mirrored lockers
- Overhead lighting
- Shower tray automatic pump-out system
- Vanity unit locker & basin with hot & cold pressurised water
- Venetian blind

Starboard Guest Cabin:

- Bedside table
- Feature windows with single opening porthole
- Mirror
- Overhead lighting
- Reading lights
- Twin full length berths with sprung mattresses
- Venetian blind
- Wardrobe with leather inlay doors

Port Side Guest Cabin (optional):

- Feature windows with single opening porthole
- Mirror
- Twin bunk berths with sprung mattresses
- Venetian blind
- Wardrobe with leather inlay doors

Double Crew Cabin (optional):

- Access through starboard transom steps
- Electric silent-flush freshwater toilet
- Feature window with venetian blind
- Twin full length berth with foam mattresses
- Hanging locker
- Mirror
- Opening porthole
- Overhead lighting
- Power point
- Sink with hot & cold mixer tap

Engines & Sterngear:

- Automatic bilge pumps for forward bilge, engine bay & rudder bay with manual 'on' override
- Automatic engine bay fire extinguisher system
- Dripless shaft seals
- Electric engine bay fans
- Engine air intakes
- Engine bay lights
- Engine room soundproofing
- Exhaust overheat warning system
- High capacity emergency manual bilge pump system
- Manganese bronze 'P' brackets
- Manganese bronze propellers contrarotating
- Seacocks on all inlets/outlets below waterline
- Stainless steel alloy shafts

Air Conditioning:

- Chilled water high capacity system producing 120,000btu

Fuel System:

- Emergency fuel shut-off valves accessible via cable-operated remote control
- High capacity water separators & fuel filters
- High capacity twin fuel tanks (4680 litres)
- Individual fillers & vents to port & starboard

Freshwater System:

- Automatic, pressurised supply
- Calorifier hot water system
- Water tank - 1080 litre capacity

Blackwater System:

- Holding tank (300 litres) with electric macerator pump-out

Commissioning:

Commissioning, pre-delivery inspection & handover at the Fairline Commissioning Centre, Ipswich UK

USA Specifications:

- Voltage - 2 x 110V (220V) 60Hz

Whilst every effort is made to keep all sales literature up to date, it should not be regarded as an infallible statement of current specifications & does not constitute an offer for the sale of any particular boat.

We continually seek to improve the specification & design of our boats, so alterations & upgrades to specifications take place continually.

Appointed dealers are not agents of Fairline Yachts Ltd & are not authorised to commit Fairline Yachts Ltd by any express of implied undertaking or representation.

Performance Figures: Power quoted in our literature for engines is crankshaft output.

Performance Estimates: Performance estimates are given in good faith but are in no way guaranteed for any particular model. Dirt on the bottom of the boat, damage to the propellers, engine tuning, external water & air temperatures & the weight of crew, fuel & water carried can all adversely affect performance.

For those & other reasons we can give no performance guarantees