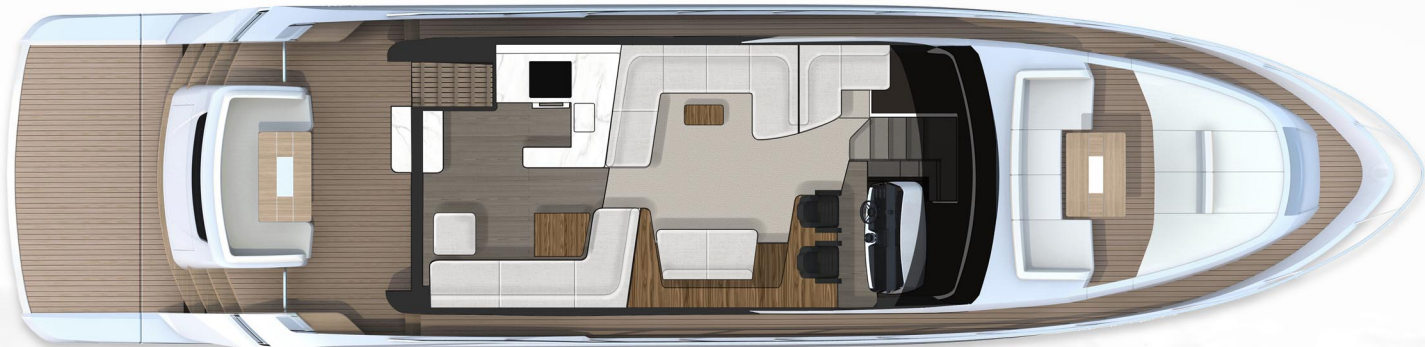
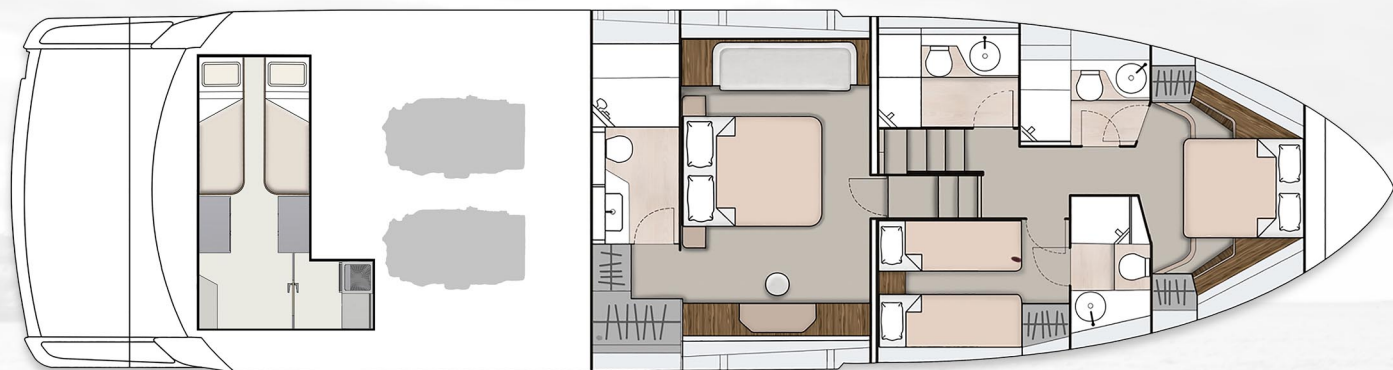




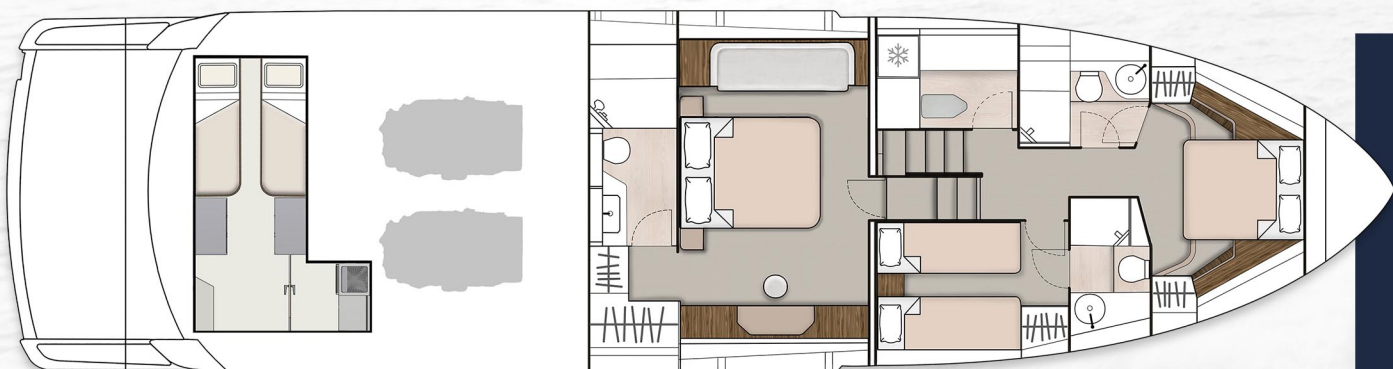
Flybridge



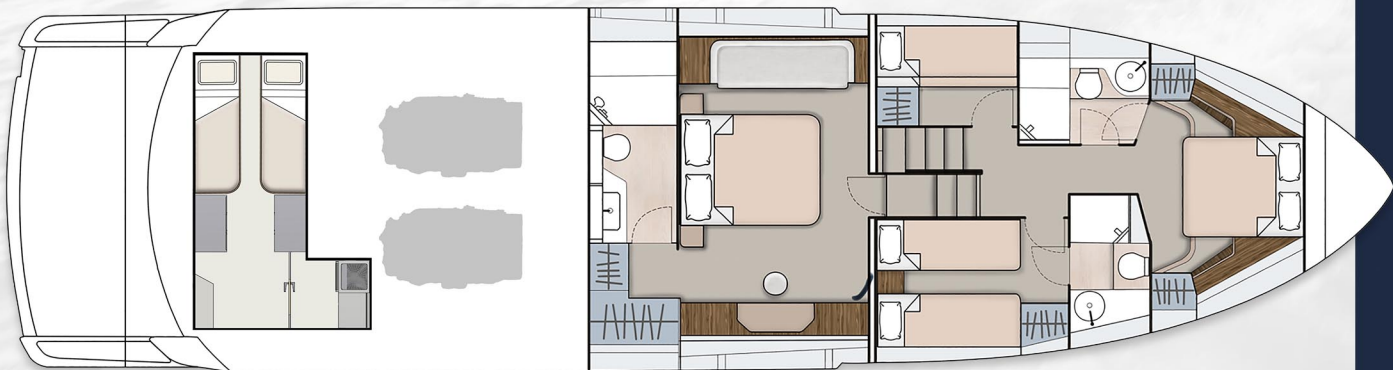
Main Deck



3 Cabin



3 Cabin with utility (optional)



4 Cabin (optional)

# SQUADRON 68



2022 Model Year  
Standard Specification



## Principle Dimensions

Length overall (incl. pulpit):	69'3" (21.12m)
Beam (incl. gunwale):	17'2" (5.23m)
Draft:	5'1" (1.57m) unloaded
Airdraft:	20'1" (6.13m)
Transport height:	20'4" (6.24m)
Berths:	6 - 10
Fuel capacity:	1029 gallons / 1236 US gallons (4680 litres)
Water capacity (incl. calorifier):	237 gallons / 285 US gallons (1080 litres)
Dry weight (approx.):	39.37 tonnes / 44 US tons (40,000kg)

## Engines and Performance

2 x Caterpillar C18-1150	2 x MAN V8-1200
Max. power: 2300 hp	Max. power: 2400 hp
Drive: Shaft	Drive: Shaft
Fuel: Diesel	Fuel: Diesel
Max. speed: 30 knots	Max. speed: 30 knots (est.)

Type approval:	CE Category B
Capacity:	16 people





## Deck:

- Anchor chain locker
- Anchor winch
- Anchor winch controls
- Bathing platform ladder
- Black mesh windscreen cover
- Calibrated galvanised anchor chain (12mm, 80m)
- Carbon fibre ensign staff
- Deck wash outlets
- Fender (x8)
- Foredeck cup holders
- Foredeck seating & sunbeds
- Foredeck stowage lockers
- Fuel fillers
- Full set of IMCO navigation lights
- Hot & cold-water transom shower
- Moulded non-slip deck surface
- Remote control search light
- Riding light
- Self-stowing Delta® galvanised anchor (40kg)
- Stainless steel bow, spring & stern cleats
- Stainless steel bow fairleads
- Stainless steel handrails
- Stainless steel pulpit
- Teak laid bathing platform
- Stainless steel transom gates
- Twin horns
- Water filler
- Windscreen washers
- Windscreen wipers

## Lower Helm:

- USB socket
- Adjustable/tilt steering wheel
- Bilge pump switches with integral operating warning lights & audible alarms
- Bow thruster controls
- Controls for engine bay fire extinguisher system
- Drinks holders
- Electronic single-lever throttle & gear controls for port & starboard engines
- Glass Bridge incorporating full engine instrumentation; tachometers, fuel gauges, temperature gauges, audible alarms & rudder position indicator
- High speed magnetic compass
- f-Drive multifunction display
- Garmin 16’ digital multi-function colour display
- Garmin autopilot
- Garmin VHF marine radio
- Garmin tri-data display

- Opening window
- Powered steering
- Remote anchor winch controls
- Searchlight controls
- Switches for navigation & riding lights, windscreen wipers & engine room extractor fans
- Trim tab controls
- Twin independent helm & co-pilot seats

## Flybridge & Second Helm:

- 12V heavy duty weatherproof socket
- Adjustable/tilt steering wheel
- Adjustable bolstered helm seating
- Bow thruster controls
- Companion seating to helm
- Aft facing seating & tables
- Dedicated dining seating with dining table
- Drinks holders
- Electronic single lever throttle & gear controls for port & starboard engines
- Flybridge access hatch
- Flybridge bar with refrigerator & sink
- Flybridge covers
- Fusion® amplifier remote display & speakers
- High speed magnetic compass
- Moulded non-slip deck surface
- Powered steering
- Radar arch/mast
- Remote anchor winch controls
- Remote control searchlight
- Repeat flybridge engine instrumentation, controls & electronics
- Stainless steel handrails
- Storage unit housing waste bin
- Teak laid oversize flybridge steps
- Teak table
- Trim tab controls
- USB socket
- VHF radio incorporating intercom
- Wind-deflecting screen with grab rail

## Foredeck:

- Recessed seating area with low level lighting
- Seating and sunbed cushions with luft track fitting
- Drinks holders
- Tonneau cover
- USB socket

## Electrical Systems:

### 230 - 240V 50Hz

- All 240V, 24V & 12V circuits (where applicable) protected by circuit breakers with main electrical load control panel
- Dimmer switches
- Fire shutdown system
- Heavy duty circuit breakers
- Isolating switches to all batteries
- Onan® 21.5 kW generator

### 12 Volt

- Voltage dropper from domestic batteries

### 24 Volt

- Batteries - 2 x heavy duty batteries exclusively for port engine starting
- Batteries - 2 x heavy duty batteries exclusively for starboard engine starting
- Batteries - 4 x heavy duty batteries wired in parallel supply for domestic services & port engine starting
- Emergency battery coupling system permits each engine to start from opposite battery bank

### 240 Volt

- Isolation summation transformer
- Polarity check & earth leakage protection system
- Power points throughout the yacht (fed from shore power or generator)
- Regulated 80amp charger for domestic batteries
- Shore power supply
- Spare circuit breakers for optional equipment

## Cockpit:

- 12V heavy duty weatherproof socket
- Access hatch to engine room
- Blue LED lighting to cockpit
- Boat hook
- Deck level lighting
- Drinks holders
- Fender stowage
- Flybridge steps
- Flybridge access hatch
- Fusion® RA50 radio & remote control
- Life raft stowage
- Manual bilge pumps
- Mooring lines & stowage
- Teak laid floor throughout self-draining cockpit
- USB socket

## Interior Décor:

- Oak Satin
- Choice of interior finishes selected by the Fairline Yachts Design Studio

## Hullform & Construction:

- Antifouling protection to hull
- Bow thruster
- Deep 'V' hull
- Design, layout & detailing by AM Yacht Design and the Fairline Yachts Design Studio
- Naval architecture by Vripack
- Extended sound-proofing between engine room and accommodation
- Feature windows with opening portholes
- Moulded spray deflectors
- Hull/deck joint bolted & bonded
- Integrally moulded engine bearers
- Isophthalic gel coat backed by isophthalic resin-rich powder-bound glass mat
- Polyurethane foam cores throughout deck for strength & thermal insulation
- Resin infused, cored hull & liner with hand laid deck & components
- White hull

## Saloon:

- 50" LCD TV
- Fixed height dining table
- Fusion® audio with wireless connectivity
- Drinks cabinets with 8 lead crystal tumblers
- LED ceiling lights
- Random oak flooring
- Sliding patio door to cockpit
- Venetian blinds

## Galley:

- Avonite® worksurface
- Chopping board to sink infill
- Crockery stowage
- Electric induction hob
- Extractor fan
- China dinner service & cutlery set (6 place settings)
- Fire extinguisher
- First aid kit
- Fridge Freezer
- Integrated waste bin
- LED ceiling lights
- Random oak floor
- Stowage cupboards & drawers
- Sink with hot & cold mixer tap

## Lobby:

- Access to electrical control panel
- Access to day head
- Lighting to stair risers



## Forward Cabin:

- Bedside tables
- Double bed with storage drawers
- Escape hatch to foredeck with blind
- Feature windows with single opening porthole
- Full length mirror
- LED ceiling lights
- Reading lights
- Sprung mattress
- Venetian blinds
- Wardrobes

## Forward En Suite:

- Avonite® vanity unit with locker & basin with hot & cold pressurised water
- Random Oak® floor
- Electric silent-flush freshwater toilet
- Extractor fan
- Feature window with opening porthole
- Full set of bathroom fittings
- Full standing height shower with hinged door
- Mirror
- Shower tray automatic pump-out system
- Stowage locker
- Towel rail & Towel set
- Venetian blind

## Master Cabin:

- 40" LCD TV
- Bedside tables
- King size bed with interior sprung mattress & storage drawers
- Feature windows with opening portholes
- Full-height standing headroom
- Fusion® audio system with wireless connectivity
- LED ceiling lights
- Reading lights
- Seating
- Upholstered bedhead
- Vanity unit/bureau with chair
- Venetian blinds
- Wardrobes with mirrored doors

## Master En Suite:

- Avonite® vanity unit with locker & twin basins with hot & cold pressurised water
- Random Oak® floor
- Electric silent-flush freshwater toilet
- Extractor fan
- Feature window with single opening porthole
- Full set of bathroom fittings
- Full standing height shower with seat & hinged door

- LED ceiling lights
- Mirror
- Overhead lockers
- Shower tray automatic pump-out system
- Towel rail & Towel set
- Venetian blind

## Starboard Guest Cabin:

- Bedside table
- Drawers under bed
- Feature window with single opening porthole
- Full length berths (x 2) with interior sprung mattresses
- Full length mirror
- LED ceiling lights
- Reading lights
- Venetian blind
- Wardrobe

## Starboard Guest Cabin En Suite:

- Avonite® vanity unit with locker & basin with hot & cold pressurised water
- Random Oak® floor
- Electric silent-flush freshwater toilet
- Extractor fan
- Feature window with opening porthole
- Full set of bathroom fittings
- Full standing height shower with hinged door
- Mirror
- Shower tray automatic pump-out system
- Stowage locker
- Towel rail & Towel set
- Venetian blind

## Port Guest Cabin (optional):

- Full length bunks (x 2) with interior sprung mattresses
- Full length mirror
- LED ceiling lights
- Opening porthole
- Reading lights
- Venetian blind
- Wardrobe

## Day Head:

- Avonite® vanity unit with locker & basin with hot & cold pressurised water
- Electric silent-flush freshwater toilet
- Feature window with opening porthole
- Full set of bathroom fittings
- LED ceiling lights
- Mirror
- Random Oak® floor
- Towel rail
- Towel set

## Utility Room (optional in lieu of dayhead):

- Eye-level & undercounter storage
- Feature window with single opening porthole
- Full height fridge/freezer
- Integrated ironing board
- LED ceiling lights
- Power points

## Aft Crew Cabin (optional):

- 220V/240V shaving point
- Access to en-suite bathroom
- Aft crew cabin access from platform with stairs
- Air conditioning
- Opening porthole with fly screen
- Electric silent-flush freshwater toilet
- Fire extinguisher
- Full standing height shower with hinged floor tray
- LED ceiling lights
- Mirror
- One fold-up berth & one fixed berth with drawers below
- Power points
- Random Oak® floor
- Shower proof curtains
- Sink with hot & cold mixer tap

## Engines & Sterngear:

- Access through cockpit hatch
- Automatic bilge pumps for forward bilge, engine bay & rudder bay with manual 'on' override
- Automatic engine room fire extinguisher system with warnings at both helms
- Dripless shaft seals
- Electric engine room fans
- Electric trim tabs with cathodic protection
- Engine room lights
- Engine room soundproofing
- Exhaust overheat warning system
- High capacity emergency manual bilge pump system
- Manganese bronze 'P' brackets
- Manganese bronze propellers contrarotating
- Seacocks on all inlets/outlets below waterline
- Water cooled engine exhausts with through hull outlets

## Fuel System:

- Emergency fuel shut off valves
- High capacity water separators & fuel filters
- Twin alloy fuel tanks

## Freshwater System:

- Automatic, pressurised supply
- 80 litre calorifier hot water system
- Water tank

## Black Waste:

- Holding tank (400 litres) with electronic macerator pump-out

## Air Conditioning:

- Chilled water high capacity system
- Screen demist vents linked to air conditioning

## Commissioning:

Full Yacht Division commissioning, pre-delivery inspection & handover at the Fairline Commissioning Centre, Ipswich, UK

## USA Specifications:

- Voltage - 2 x 110V (220V) 60Hz

Whilst every effort is made to keep all sales literature up to date, it should not be regarded as an infallible statement of current specifications & does not constitute an offer for the sale of any particular boat.

We continually seek to improve the specification & design of our boats, so alterations & upgrades to specifications take place continually.

Appointed dealers are not agents of Fairline Yachts Ltd & are not authorised to commit Fairline Yachts Ltd by any express or implied undertaking or representation.

Performance Figures: Power quoted in our literature for engines is crankshaft output.

Performance Estimates: Performance estimates are given in good faith but are in no way guaranteed for any particular model. Dirt on the bottom of the boat, damage to the propellers, engine tuning, external water & air temperatures & the weight of crew, fuel & water carried can all adversely affect performance.

For those & other reasons we can give no performance guarantees