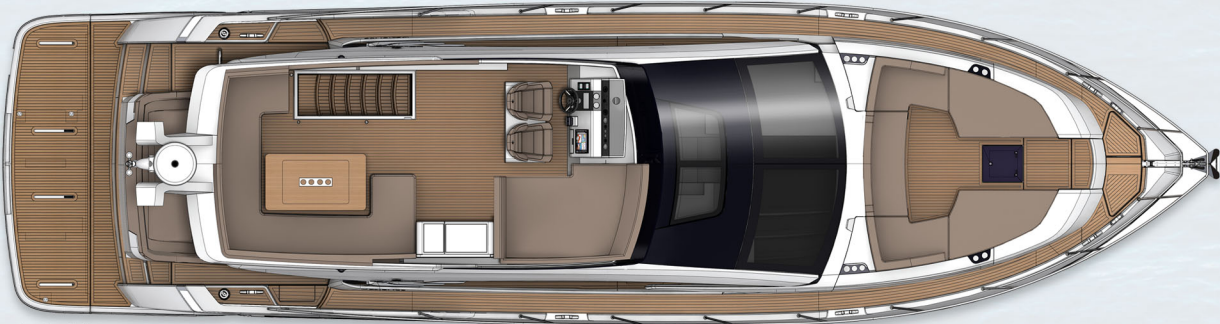


SQUADRON 53

2021 Model Year
Standard Specification



Flybridge



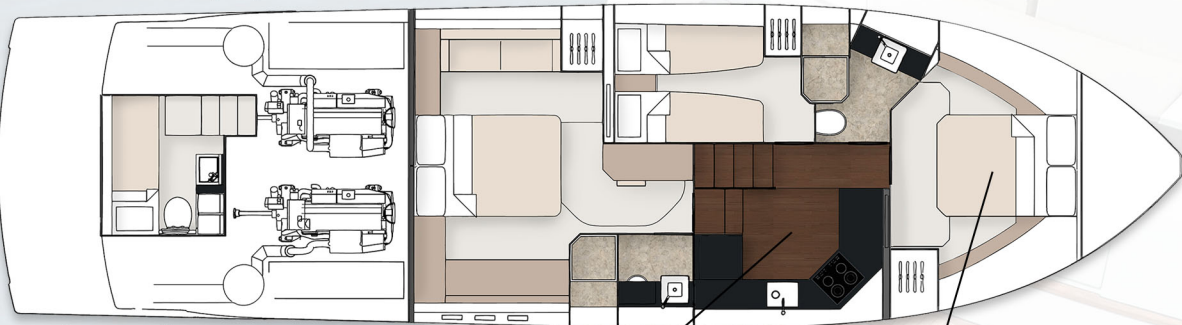
Main Deck - Sofa to Starboard



Main Deck -Galley Up Aft



Main Deck -Galley Up Fwd



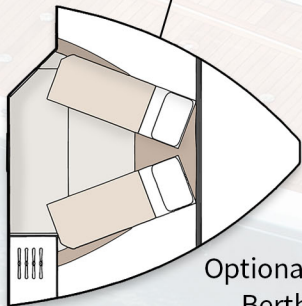
3 Cabin - Galley Down



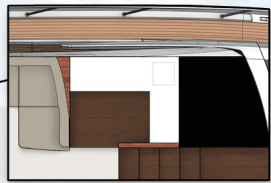
Optional Day Head
& Utility



Optional 4th
Bunk Cabin



Optional 'V'
Berth



Optional Cocktail
Bar Fwd



Principle Dimensions

Length overall (incl. pulpit):	55'6" (16.92m)
Length overall (excl. pulpit):	53'6" (16.32m)
Beam (incl. gunwale):	14'10" (4.52m)
Draught:	3'11" (1.20m) unloaded
Berths:	6 - 9
Height above waterline:	18'2" (5.56m)
Transport height:	17'1" (5.15m)
Dry weight (approx.):	21.16 imp. tons / 23.69 US tons (21,000kg)
Fuel capacity:	530 gallons / 637 US gallons (2,412 litres)
Water capacity: (incl. calorifier)	120 gallons / 145 US gallons (550 litres)

Engines and Performance

2 x Volvo Penta D11-725
Max. power: 1450 hp
Drive: Shaft
Fuel: Diesel
Max. speed: 32 knots

Type approval:	CE Category B
Capacity:	16 people

Deck:

- Anchor chain locker
- Anchor winch controls
- Anchor winch (electric)
- Calibrated anchor chain (50m)
- Carbon fibre ensign staff
- Fender set
- Foredeck drinks holders
- Foredeck storage lockers
- Fuel fillers
- Full set of IMCO navigation lights
- Hot & cold water transom shower
- Moulded non-slip deck surface
- Recessed self-draining area on foredeck for sunbed cushions
- Riding light
- Self-stowing Delta® anchor (25kg)
- Stainless steel aft fairleads
- Stainless steel bow fairleads
- Stainless steel bow, cockpit, stern & twin spring cleats
- Stainless steel gunwale with rubber inserts
- Stainless steel pulpit rail
- Teak laid bathing platform
- Twin horns
- Water filler
- Windscreen washers
- Windscreen wipers

Flybridge & Second Helm Position:

- 12V weatherproof socket with USB
- Access hatch
- Adjustable/tilt steering wheel
- Bilge pump warning lights & audible alarms
- Bolstered helm seating
- Bow thruster controls
- Drinks holders
- Electronic single-lever throttle & gear controls for port & starboard engines
- Fire extinguisher
- Flybridge bar unit with refrigerator & sink
- Garmin digital multi-function instrument system with colour display
- Helm positioned to port for visibility through flybridge hatch
- Teak table with protective cover
- High speed magnetic compass
- Moulded non-slip deck surface
- Powered steering
- Radar mast
- Remote anchor winch controls

- Repeat autopilot controls
- Repeat engine bay fire extinguisher controls
- Repeat engine instrumentation, controls & electronics
- Rudder position indicator
- Searchlight controls
- Seat covers
- Teak laid flybridge steps
- Trim tab controls
- Twin helm seats
- VHF radio incorporating intercom
- Wind-deflecting screen with grab rail

Helm Position:

- 12V socket with USB port
- Adjustable/tilt steering wheel
- Bilge pump switches with integral operating warning lights & audible alarms
- Black mesh windscreen covers
- Controls for engine bay fire extinguisher system
- Drinks holders
- Electronic single-lever throttle & gear controls for port & starboard engines
- Fuel gauges
- Full engine instrumentation inc; tachometers, temperature gauges, audible alarms & engine hour meters
- Garmin GHP 20 autopilot system
- Garmin GMI 20 digital multi-function instrument system with colour display
- Garmin VHF 300i marine radio
- High speed magnetic compass
- Opening window
- Powered steering
- Red night-light illumination to helm
- Remote anchor winch controls
- Rudder position indicator
- Searchlight controls
- Switches for navigation & riding lights, windscreen wipers & engine bay extractor fans
- Trim tab controls
- Twin helm seats

Electrical Systems:

- 230 - 240V 50Hz
- All 240V, 24V & 12V circuits (where applicable) protected by circuit breakers with main electrical load control panel
- Heavy duty circuit breakers
- Isolating switches to all batteries
- Onan® 9.5kW generator

12 Volt

- Batteries - 2x heavy duty for voltage dropper from domestic batteries

24 Volt

- 2 x heavy duty battery for exclusive port engine starting
- 2 x heavy duty battery for exclusive starboard engine starting
- Batteries - 4 x heavy duty batteries wired in parallel supplying domestic services & port engine starting
- Circuit breaker for anchor winch
- Emergency battery coupling system permits each engine to start from opposite battery bank
- Regulated battery charger

240 Volt

- Polarity check & earth leakage protection system
- Power points throughout the boat fed from shore power or generator
- Regulated 80amp charger for domestic batteries
- Shore power supply
- Spare circuit breakers for optional equipment

Cockpit:

- 12V heavy duty weatherproof socket
- Access to lazarette or crew cabin
- Access to side deck
- Boat hook
- Deck level lighting
- Drinks holders
- Engine room access hatch
- Fender stowage
- 'J' shaped cockpit seating with adjustable backrest to make sun bed
- Life raft stowage
- Manual bilge pumps
- Mooring warps
- Mooring warp stowage
- Single level floor from cockpit to saloon
- Teak laid floor throughout selfdraining cockpit
- Teak table with drinks holder
- Transom gate

Interior Décor:

Choice of interior finishes selected by the Fairline Yachts Design Studio

Hullform & Construction:

- Antifouling protection to hull

- Deep 'V' forward 12.5° deadrise aft
- Design, layout & detailing by the Fairline Yachts Design Studio
- Feature windows with opening portholes
- Full length moulded spray deflectors
- Hull/deck joint bolted & bonded
- Integrally moulded engine bearers
- Isophthalic gel coat backed by isophthalic resin-rich powder-bound glass mat
- Resin infused cored hull & liner with hand-laid deck & components
- Polyurethane foam cores throughout deck for strength & thermal insulation

Saloon:

- 40" Samsung TV and Fusion audio with wireless connectivity
- Coffee table converts to dining table
- FAIRLINE EDITION durable tumblers (set of 6)
- Overhead lighting
- Random oak flooring
- Sideboard with stowage
- Sliding door to cockpit

Galley:

- Avonite work surface
- Chopping board to sink infill
- Crockery stowage
- Extractor fan
- FAIRLINE EDITION melamine dinner service (24-piece, 6 place settings)
- Fire extinguisher
- First aid kit
- Full height fridge/freezer
- Induction hob
- Integrated waste bin
- Microwave combi oven
- Overhead lighting
- Random oak floor
- Sink with hot & cold mixer tap
- Stowage cupboards & drawers

Lobby:

- Access to electrical control panel
- Access to master cabin, guest cabin/s & day head
- Handrail
- Lighting to stair risers
- Space for (optional) domestic appliance

Master Cabin:

- Aluminium venetian blinds
- Double bed with storage drawers
- Feature windows with opening portholes
- Mirror
- Overhead feature lighting
- Reading lights
- Sofa
- Vanity unit with stool
- Wardrobe

Master Cabin En Suite:

- Aluminium venetian blinds
- Avonite vanity unit locker & basin with
- hot & cold pressurised water
- Electric silent-flush freshwater toilet
- Extractor fan
- Full set of bathroom fittings
- Full size shower with seat & hinged door
- Large hull window with single opening port hole
- Mirror
- Mirrored lockers
- Overhead lighting
- Random oak floor
- Shower tray automatic pump-out system

Forward Cabin:

- Aluminium venetian blinds
- Bedside table
- Double bed with storage drawers
- Escape hatch to foredeck
- Feature windows with single opening porthole
- Overhead lighting
- Reading lights
- Wardrobe with mirrored doors

Forward Cabin En Suite / Day Head:

- Aluminium venetian blinds
- Day access
- Electric silent-flush freshwater toilet
- Extractor fan
- Full set of bathroom fittings
- Full standing height shower with hinged door
- Mirror
- Mirrored lockers
- Overhead lighting
- Random oak floor
- Shower tray automatic pump-out system
- Vanity unit locker & basin with hot & cold pressurised water

Port Guest Cabin:

- Aluminium venetian blinds
- Bedside table
- Feature windows with single opening porthole
- Full length berths x 2
- Mirror
- Overhead lighting
- Reading lights
- Wardrobe

Starboard Guest Cabin:

- Bedside table
- Bunk berths x 2
- Mirror
- Wardrobe

Lazarette:

- Access through hatch in cockpit seating

Crew Cabin (optional):

- Access through hatch in cockpit seating
- Electric silent-flush freshwater toilet
- Feature window with blind
- Full length berth
- Hanging locker
- Mirror
- Opening porthole
- Overhead lighting
- AC Power point
- Random oak floor
- Sink with hot & cold mixer tap

Engines & Sterngear:

- Automatic bilge pumps for forward bilge, engine bay & rudder bay with manual 'on' override
- Automatic engine room fire extinguisher system
- Dripless shaft seals
- Electric engine room fans
- Electro-hydraulic trim tabs with cathodic protection
- Engine air intakes
- Engine room lights
- Engine room soundproofing
- Exhaust overheat warning system
- High capacity emergency manual bilge pump system with dedicated valves
- Manganese bronze 'P' brackets
- Manganese bronze propellers contrarotating
- Seacocks on all inlets/outlets below waterline
- Stainless steel alloy shafts

Fuel System:

- Changeover valve system to permit each engine to draw fuel from & return fuel to either tank
- Emergency fuel shut-off valves accessible via cable-operated remote control
- High capacity water separators & fuel filters
- Individual fillers & vents to port & starboard
- Twin fuel tanks

Freshwater System:

- Automatic, pressurised supply
- Calorifier hot water system
- Water tank

Blackwater System:

- Holding tank (170 litres) with electric macerator pump-out

Commissioning:

- Full pre-delivery inspection & vessel commissioning at the Fairline Commissioning Centre, Ipswich, UK

USA Specifications:

- Voltage - 2 x 110V (220V) 60Hz

Whilst every effort is made to keep all sales literature up to date, it should not be regarded as an infallible statement of current specifications & does not constitute an offer for the sale of any particular boat.

We continually seek to improve the specification & design of our boats, so alterations & upgrades to specifications take place continually.

Appointed dealers are not agents of Fairline Yachts Ltd & are not authorised to commit Fairline Yachts Ltd by any express or implied undertaking or representation.

Performance Figures: Power quoted in our literature for engines is crankshaft output.

Performance Estimates: Performance estimates are given in good faith but are in no way guaranteed for any particular model. Dirt on the bottom of the boat, damage to the propellers, engine tuning, external water & air temperatures & the weight of crew, fuel & water carried can all adversely affect performance.

For those & other reasons we can give no performance guarantees