

2018 Model Year Standard Specification



Principal Dimensions

Length overall (inc. pulpit):

65'4" (19.96m)

Length overall (exc. pulpit):

65'2" (19.88m)

Beam (inc. gunwale):

17'2" (5.23m)

Number of berths:

6 - 10

Draught:

4'8" (1.47m)

Height above waterline

(inc. arch & nav. light mast):

17' (5.20m)

Transport height:

16'4" (5.0m)

Dry weight (approx.):

33.56 imp. tons / 37.47 US tons
(34,000kg)

Fuel capacity:

1,029 gallons / 1,236 US gallons
(4,680 litres)

Water capacity (inc. calorifier):

237 gallons / 285 US gallons
(1,080 litres)

**Engines
& Performance**

**Twin Caterpillar C18 shaft drive,
diesel (1150mhp each):**

31 knots

Type Approval:

B

**Twin MAN V8 1200 shaft drive,
diesel (1200mhp each):**

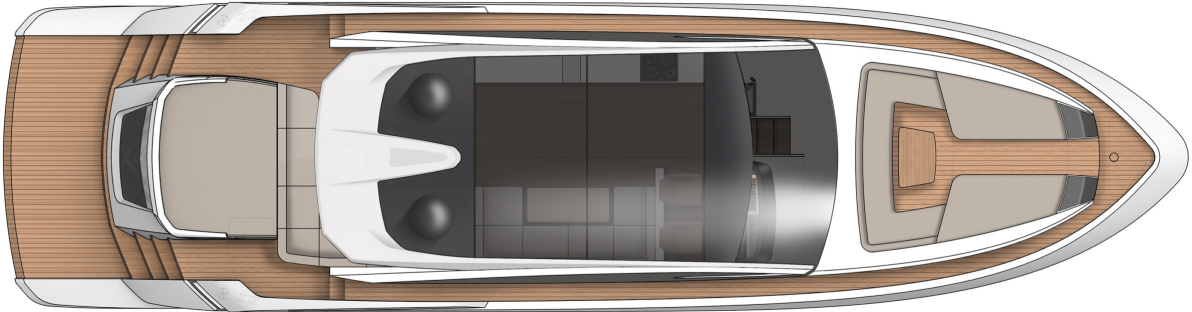
32 knots (estimated maximum)

Max Capacity:

16 persons

Deck Plans

Exterior Deck



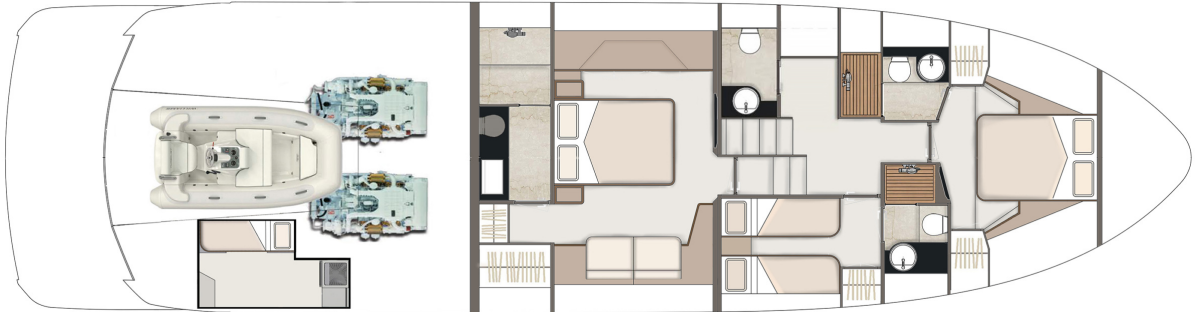
Main Deck Galley-up



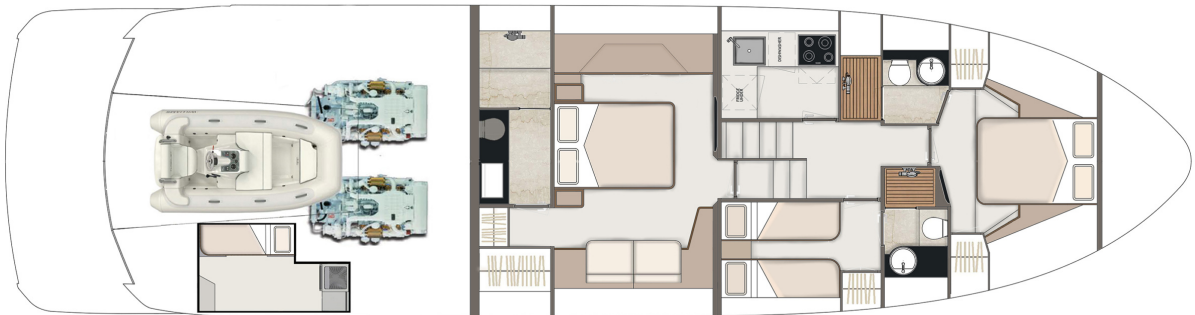
Main Deck Galley-down



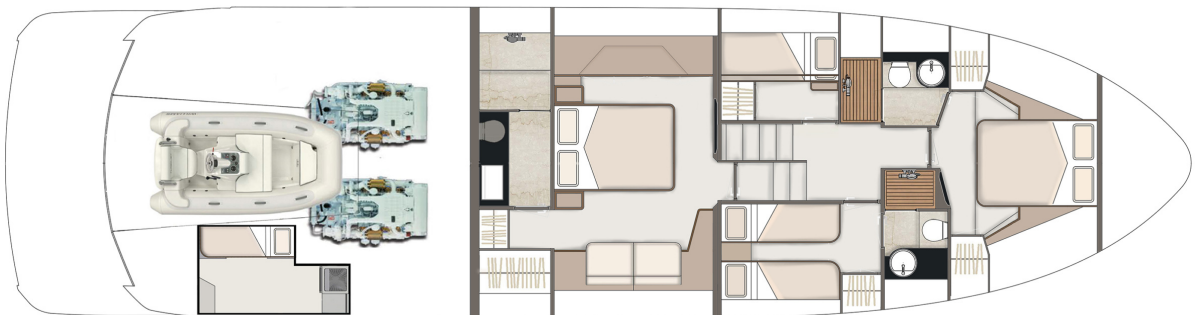
Lower Deck 3 Cabin with Day Head



Lower Deck 3 Cabin, Galley-Down



Lower Deck 4 Cabin



Deck

Anchor chain locker	Manual bilge pump forward
Anchor winch (electric)	Moulded non-slip deck surface
Anchor winch controls	Remote control searchlight
Bathing platform ladder	Self-stowing Delta® anchor (40kg)
Calibrated anchor chain (90m)	Stainless steel aft fairleads
Ensign staff	Stainless steel bow fairleads
Fender set	Stainless steel bow, cockpit, stern & twin spring cleats
Foredeck drinks holders	Stainless steel gunwale
Foredeck glazing	Stainless steel pulpit
Foredeck seating & sunbeds	Teak laid hi/lo bathing platform
Foredeck stowage lockers	Twin horns
Fuel fillers	Water filler
Full set of IMCO navigation lights	Windscreen washers
Handrail	Windscreen wipers
Hot & cold water transom shower	

Helm Position

USB socket	Raymarine GS165 multi-function display
Adjustable/tilt steering wheel	Raymarine Type 1 autopilot
Bilge pump switches with integral operating warning lights & audible alarms	Raymarine P70RS control head unit
Black mesh windscreen covers	Raymarine RAY260E VHF marine radio
Bow thruster control	High speed magnetic compass
Controls for engine bay fire extinguisher system	Opening window (electric)
Drinks holders	Powered steering
Electronic single-lever throttle & gear controls for port & starboard engines	Powered glazed sunroof with internal blind
Glass Bridge incorporating full engine instrumentation; tachometers, fuel gauges, temperature gauges, audible alarms, rudder position indicator	Red night-light illumination to helm
f-Drive (Fairline multi-function glass bridge)	Remote anchor winch controls
	Searchlight controls
	Switchgear
	Trim tab controls
	Twin helm seats

Electrical Systems

230 - 240V 50Hz

All 240V, 24V & 12V circuits (where applicable) protected by circuit breakers with main electrical load control panel

Heavy duty circuit breakers

Isolating switches to all batteries

Onan® 22.5kW generator

12 Volt

Voltage dropper from domestic batteries

Electrical Systems

Continued

24 Volt

Batteries - 2 x heavy duty batteries exclusively for port engine starting

Batteries - 2 x heavy duty batteries exclusively for starboard engine starting

Batteries - 4 x heavy duty batteries wired in parallel supplying domestic services & port engine starting

Circuit breaker for anchor winch

Emergency battery coupling system permits each engine to start from opposite battery bank

Inverter

Isolation summation transformer

240 Volt

Polarity check & earth leakage protection system

Power points throughout fed from shore power or generator

Regulated 75amp charger for domestic batteries

Shore power supply line

Cockpit

12V heavy duty weatherproof socket	Life raft stowage
Access to lazarette or crew cabin	Manual bilge pump
Access to side deck	Mooring warps
Bathing platform lights	Mooring warp stowage
Boat hook	Seating, 'U' shaped (Extended Cockpit Model)
Cockpit cover (white)	Single level floor from cockpit to saloon
Cockpit bar unit	Speakers
Deck level lighting	Sunbed over garage (Extended Cockpit Model)
Drinks holders	Teak laid floor throughout self-draining cockpit
Engine bay access hatch with stainless steel gas struts	Teak table with drinks holders
Fender stowage	Transom gate
Fusion RA50 radio & remote control	
Garage for Williams 325 Jet Tender (Extended Cockpit Model)	
drinks holders	
Transom gate	

Interior Décor

Choice of interior finishes from the Amalfi, Capri, Hamptons or St Tropez interior styling ranges selected by Alberto Mancini and the Fairline Interior Design Studio

Hullform & Construction

Antifouling protection to hull	Hull/deck joint bolted & bonded
Bow thruster	Integrally moulded engine bearers
Deep 'V' hull	Isophthalic gel coat backed by isophthalic resin-rich powder-bound glass mat
Design, layout & detailing by Alberto Mancini	Polyurethane foam cores throughout deck for strength & thermal insulation
Naval architecture by Vripack	Resin infused cored hull & liner with hand-laid deck & components
Extended sound proofing between engine room and accommodation	White hull
Feature windows with opening portholes	
Moulded spray deflectors	

Saloon

50" Samsung LCD TV, Harman Kardon 2.1 with wireless connectivity	Overhead lighting
Harman Kardon wall mounted speakers	Random oak flooring
Electric hardtop with overhead glazing	Sliding patio door to cockpit with 'power down' functionality (Extended Cockpit Model)
	Venetian blinds

Galley

Avonite work surface
Chopping board to sink infill
Crockery stowage
Dinner service 24-piece, 6 place settings
Fire extinguisher
First aid kit
Fridge/freezer

Induction hob
Integrated waste bin
Microwave combi oven
Overhead lighting
Random oak floor
Sink with hot & cold mixer tap
Stowage cupboards & drawers

Lobby

Access to master cabin, guest cabins & day head
Handrail

Lighting to stair risers
Storage unit (standard layout)
Washer/Dryer

Accommodation

Master Cabin

40" Samsung LCD TV
Bedside tables
Drawers to port side
Harman Kardon wall mounted speakers
Kingsize double bed with sprung mattress
Feature windows with opening portholes

Fusion audio system with wireless connectivity
Mirror
Overhead feature lighting
Reading lights
Sofa
Vanity unit
Venetian blinds
Wardrobe with mirrored doors

Master Cabin En Suite

Avonite vanity unit locker & basin with hot & cold pressurised water
Avonite floor
Electric silent-flush freshwater toilet
Extractor fan
Full set of bathroom fittings
Full size shower with seat & glass, hinged door

Large hull window with single opening port hole
Mirror
Mirrored lockers
Overhead lighting
Shower tray automatic pump-out system
Venetian blind

Forward Guest Cabin

Bedside tables
Double bed with sprung mattress and storage drawers
Escape hatch to foredeck
Feature windows with single opening porthole

Overhead glazing with blind
Overhead lighting
Reading lights
Venetian blinds
Wardrobe with leather inlay doors

**Forward Guest Cabin
En Suite**

Avonite floor
Electric silent-flush freshwater toilet
Extractor fan
Full set of bathroom fittings
Full standing height shower with glass hinged door
Mirror

Mirrored lockers
Overhead lighting
Shower tray automatic pump-out system
Vanity unit locker & basin with hot & cold pressurised water
Venetian blind

**Starboard side Guest
Cabin**

Bedside table
Feature windows with single opening porthole
Mirror
Overhead lighting

Reading lights
Twin full length berths with sprung mattresses
Venetian blind
Wardrobe with leather inlay doors

**Port side Guest Cabin
Optional**

Feature windows with single opening porthole
Mirror
Twin bunk berths with sprung mattresses

Venetian blind
Wardrobe with leather inlay doors

**Single Crew Cabin
Optional**

Access through transom steps
Electric silent-flush freshwater toilet
Feature window with venetian blind
Full length berth with foam mattress

Hanging locker
Mirror
Opening porthole
Overhead lighting
Power point
Sink with hot & cold mixer tap

**Engines
& Sterngear**

Automatic bilge pumps for forward bilge, engine bay & rudder bay with manual 'on' override
Automatic engine bay fire extinguisher system
Dripless shaft seals
Electric engine bay fans
Electro-hydraulic trim tabs with cathodic protection
Engine air intakes
Engine bay lights

Engine room soundproofing
Exhaust overheat warning system
High capacity emergency manual bilge pump system
Manganese bronze 'P' brackets
Manganese bronze propellers contra-rotating
Sea cocks on all inlets/outlets below waterline
Stainless steel alloy shafts

Air Conditioning

Chilled water high capacity system producing 120,000btu

Fuel System

Emergency fuel shut-off valves accessible via cable-operated remote control
High capacity water separators & fuel filters

High capacity twin fuel tanks (5000 litres)
Individual fillers & vents to port & starboard

Freshwater System

Automatic, pressurised supply
Calorifier hot water system

Water tank

Black Water

Holding tank (300 litre capacity) with electric macerator pump-out

Commissioning

Full Fairline Yacht Division commissioning, pre-delivery inspection & handover at Fairline Yachts Commissioning Centre, Ipswich UK

USA Specifications

In addition to or in lieu of those listed above

Voltage - 2 x 110V (220V) 60Hz

Whilst every effort is made to keep all sales literature up to date, it should not be regarded as an infallible statement of current specifications & does not constitute an offer for the sale of any particular boat. We continually seek to improve the specification & design of our boats, so alterations & upgrades to specifications take place continually.

Appointed dealers are not agents of Fairline Yachts Ltd & are not authorised to commit Fairline Yachts Ltd by any express or implied undertaking or representation.

Performance Figures: Power quoted in our literature for diesel inboard engines is crankshaft output.
Performance Estimates: Performance estimates are given in good faith, but are in no way guaranteed for any particular model. Dirt on the bottom of the boat, damage to the propellers, engine tuning, external water & air temperatures & the weight of crew, fuel & water carried can all adversely affect performance. For those & other reasons we can give no performance guarantees